



11&21/02-47.1/00001/08-24-70  
S. River Rd, 3000 ft Healthy



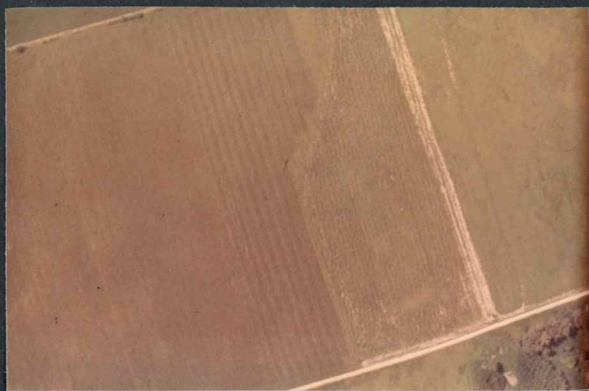
11&21/02-47.1/00002/08-24-70  
S. River Rd, Severe Blight



11& 21/02-471/00003/08-24/70  
S. River Rd, Severe Blight



11&21/02/47.1/00004/08-24-70  
S. River Rd, Moderate Blight



11&21/02-47.1/00005/08-24-70  
S. River Rd, Healthy Corn

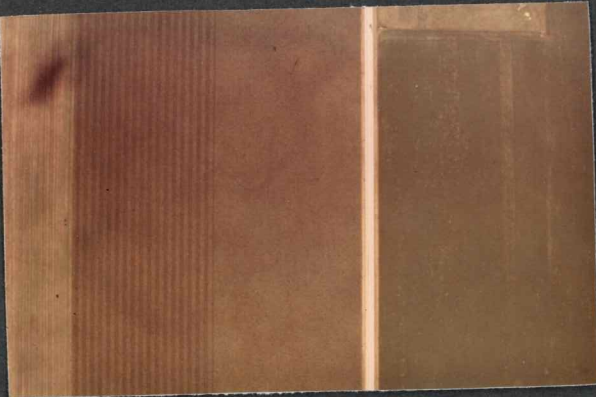


11&21/02-47.1/00006/08-24-70  
S. River Rd, Severe Blight

11&21/02-47.1/00007/08-24-70  
S. River Rd, Severe Blight



11&21/02-47.1/00008/08-24-70  
Blighted Corn Field



11&21/02-47.1/00009



11&21/02-47.1/00010/08-21-70  
Area D, 10,000 feet mostly  
Blighted corn fields

11&21/02-47.1/00011/08-21-70  
Area D, Blighted & Healthy Corn,  
Soybean fields



11&21/02-47.1/00012/08-21-70  
Area D, Blighted & Healthy Corn,  
Soybean fields

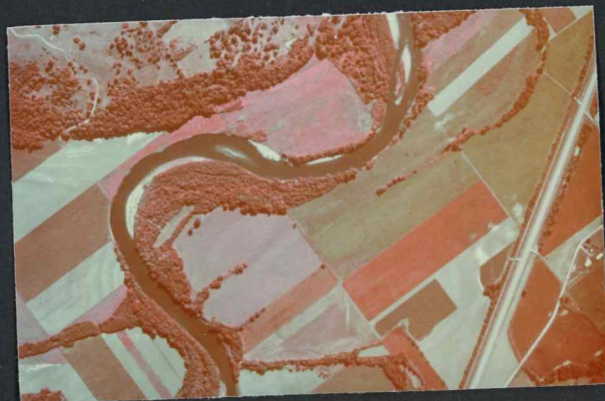


11&21/02-47.1/00013/08-21-70  
Area D, Blighted & Healthy Corn,  
Soybean fields



11&21/02-47.1/00014/08-21-70  
Area D, Blighted & healthy Corn,  
Soybean fields

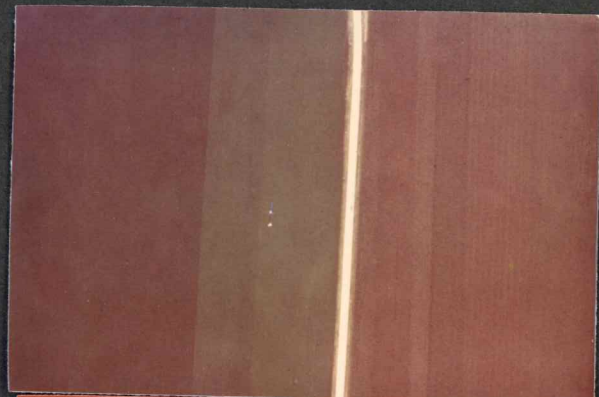
11&21/02-47.1/00015/08-21-70  
Area D, Blighted & Healthy Corn,  
Soybean fields



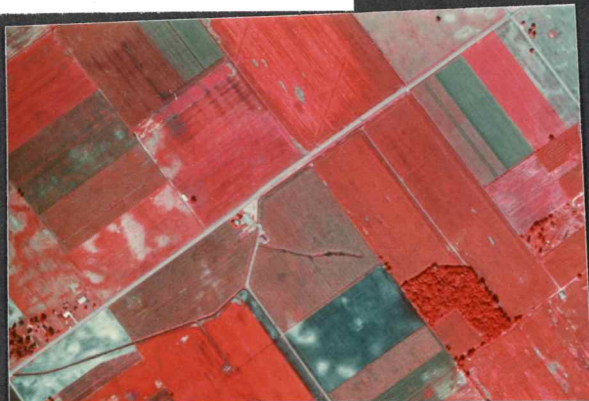
11&21/02-47.1/00016/08-21-70  
Area D, Blighted & Healthy Corn,  
River Bottom Area



11&21/02-47.1/00017/08-19-70  
Area C, near Romney-Healthy &  
Blighted Corn fields



11&21/02-47.1/00018/08-24-70  
Blighted & Healthy Corn fields



11&21/02-47.1/00019/08-21-70  
Area E. 10,000 feet 3 levels of  
Blight



11&21/02-47.1/00020/08-21-70  
Area D, 10,000 feet Striped field  
Blight & Healthy



11&21/02-47.1/00021/08-19-70  
S. River Rd. 3,000 feet Healthy  
and Blighted corn



11&21/02-47.1/00022/08-21-70  
Area E white River Healthy & Slight  
Blighted corn fields



11&21/02-47.1/00023/08-19-70  
Area C, Various stages of blight



11&21/02-47.1/00024/08-19-70  
Area C, Various stages of blight



11&21/02-47.1/00025/08-19-70  
Area C, Various stages of blight



11&21/02-47.1/00027/08-19-70  
Area C, Various stages of blight



11&21/02-47.1/00026/08-19-70  
Area C, Various stages of blight



11&21/02-47.1/00028/08-19-70  
Area C, Various stages of blight



21/02-47.1/00029/08-21-70  
Area D corn 60,000 feet Zeiss  
Camera

11&21/02-47.1/00030/08-21-70  
Area D corn 60,000 feet RC-8  
Camera



11/02-47.1/00031/1971  
Vertical View, Healthy Corn

11/02-47.1/00032/1971  
Strips of Healthy & Blighted  
Corn

11/02-47.1/00033/1971 Severity Level 3  
Vertical View of Blight



11/02-47.1/00034/1971  
Vertical View of Blight Severity  
Level 3

11/02-47.1/00035/1971  
Vertical View of Blighted Field

11/02-47.1/00036/1971  
View of Blighted Corn Field

34

35

36





11/02-47.1/00037/1971  
Oblique View-Blighted (left)  
& Healthy Corn



11/02-47.1/00038/1971  
Oblique View of Blighted Corn  
Fields



21/02-47.1/00039



11/02-47.3/00028/08-26-70  
SCLB, Severe Infection stalks in field

29

11/02-47.3/00030/08-26-70  
SCLB, Moderate Infection in field

11/02-47.3/00031/1971  
Healthy Corn

11/02-47.3/00029/08-26-70  
SCLB, Slight infection infield



11/02-47.3/00034/1971  
Blight Severity Level 3

11/02/47.3/00032/1971  
Blight Severity Level 1

11/03-47.3/00033/1971  
Blight Severity Level 1



11/02-47.3/00035/1971  
Blight Severity Level 4



11/02-47.3/00036/1971  
Blight Severity Level 5



11/02-47.3/00037/1971  
Lodging caused by stalk rot



11/02-47.3/00038/1971  
Severe lodging



11/02-47.3/00039/1971  
SCLB-Young plant



11/02-47.3/00040/1971  
Lesions on corn leaf



11/02-47.3/00041/1971  
Dead corn leaf showing lesions