

JSC 09385

CROP IDENTIFICATION TECHNOLOGY ASSESSMENT
FOR REMOTE SENSING (CITARS)

VOLUME II

GROUND-TRUTH FIELD OBSERVATIONS OF THE AGRICULTURAL
STABILIZATION AND CONSERVATION SERVICE

PART 3

WHITE COUNTY, INDIANA



National Aeronautics and Space Administration
LYNDON B. JOHNSON SPACE CENTER

Houston, Texas

February 1975

CROP IDENTIFICATION TECHNOLOGY ASSESSMENT
FOR REMOTE SENSING (CITARS)

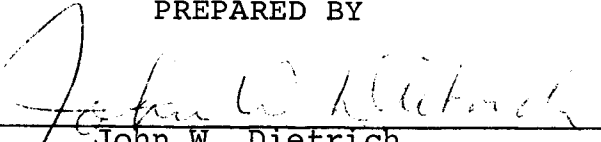
VOLUME II

GROUND-TRUTH FIELD OBSERVATIONS OF THE AGRICULTURAL
STABILIZATION AND CONSERVATION SERVICE

PART 3

WHITE COUNTY, INDIANA

PREPARED BY




John W. Dietrich


APPROVED BY



Robert M. Bizzell, Project Manager



Andrew E. Potter, Acting Chief
Research, Test, and Evaluation Branch



R. B. MacDonald, Chief
Earth Observations Division

NATIONAL AERONAUTICS AND SPACE ADMINISTRATION
LYNDON B. JOHNSON SPACE CENTER
HOUSTON, TEXAS

February 1975

Page ii is blank

iii

PREFACE

Volume II has the ground-truth field observations of Huntington, Shelby, and White Counties, Indiana, and Livingston, Fayette, and Lee Counties, Illinois. Part 3: White County, Indiana, contains the handwritten observations in the nonmetric units of measure used by the Agricultural Stabilization and Conservation Service of the U.S. Department of Agriculture.

Page iv is blank

v

ACKNOWLEDGMENT

The author of this volume acknowledges the Agricultural Stabilization and Conservation Service of the U.S. Department of Agriculture for the compilation of ground-truth field observations in White County.

GLOSSARY

- Acre - unit of measure equaling 4,046 meters²
- ASCS - Agricultural Stabilization and Conservation Service
of the U.S. Department of Agriculture
- CITARS - Crop Identification Technology Assessment for
Remote Sensing
- Co. - county
- Conf - confidence, the photointerpreter's estimate, expressed
in a percentage, of how well he identified the subject
crop
- Dir. - direction
- Est. - estimate
- Ground-truth quarter sections - ground observations by the
Agricultural Stabilization and Conservation Service of
selected 0.4-kilometer (0.25-mile) sections in each
of the six selected counties in Indiana and Illinois
- ID - identification
- Inch - unit of measure equaling 2.54 centimeters²
- JSC - Lyndon B. Johnson Space Center, Houston, Texas
- Meas. - measured

viii

Mile - unit of measure equaling 1,609 meters

N - north

No. - number

Pilot section - one of about 144 sections selected within six counties in Indiana and Illinois for the evaluation of crop proportions in aerial photographs

R - range

Section - a 2.6-kilometer² (1-mile²) township and range section in the six selected counties in Indiana and Illinois

T - township

Test area segment - a 256-kilometer² (100-mile²) area measuring 8 by 32 kilometers (5 by 20 miles) selected in each of the six counties in Indiana and Illinois

Test section - one of about 144 sections selected within six counties in Indiana and Illinois for the identification of crops from aerial photographs

TWP - township

W - west

CONTENTS

Section	Page
1.0 <u>GROUND-TRUTH FIELD OBSERVATIONS</u>	1

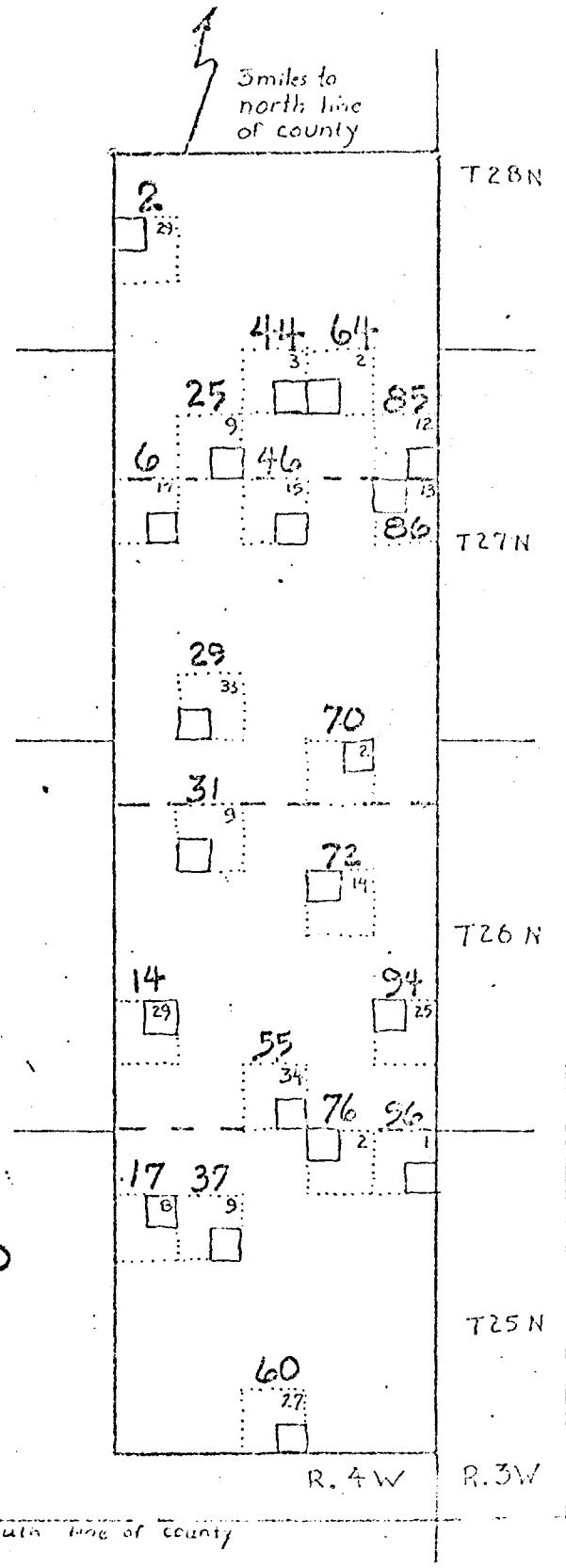
1.0 GROUND-TRUTH FIELD OBSERVATIONS

On the following pages appear the ground-truth field observations of White County, Indiana, gathered by the Agricultural Stabilization and Conservation Service of the U.S. Department of Agriculture. The first two figures and table show idealized sketches of the test area segment and the correlation of the new section numbers of the Crop Identification Technology Assessment for Remote Sensing with the old township, range, and section numbers. Using the old numbers, the next tables give the field observations of townships 25, 26, 27, and 28 north. Within each township, sections are ordered numerically; and within each section, fields are ordered numerically. All abbreviations in the tables are defined in the Glossary.

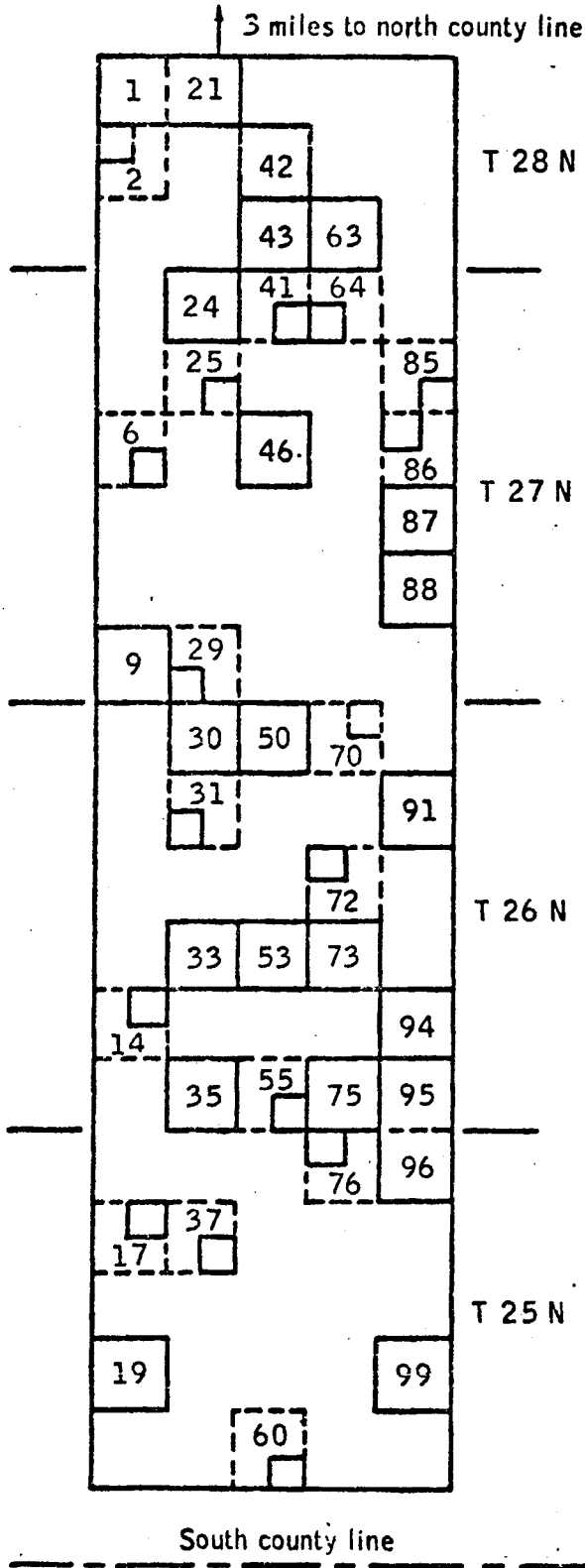
WHITE CO. INDIANA

Idealized Sketch of
Ground Investigation Tracts

ASCS GROUND OBSERVATIONS



J.H. D...
1/1/13



Segment 3

White County

Idealized sketch of test area segment



Quarter-section tract with ASCS data used by image interpreters



Test and pilot sections

SEGMENT 3
WHITE COUNTY, INDIANA

CORRELATION OF CITAR SECTION NUMBERS
WITH THE TOWNSHIP/RANGE/SECTION DESIGNATION

OLD DESIGNATION			NEW SECTION	OLD DESIGNATION			NEW SECTION
TWP	RANGE	SECTION	NO.	TWP	RANGE	SECTION	NO.
28 N	4 W	20	1	26 N	4 W	3	50
28 N	4 W	29	*2	26 N	4 W	22	53
27 N	4 W	17	*6	26 N	4 W	34	*55
27 N	4 W	32	9	25 N	4 W	27	*60
26 N	4 W	29	*14	28 N	4 W	35	63
25 N	4 W	8	*17	27 N	4 W	2	*64
25 N	4 W	20	19	26 N	4 W	2	*70
28 N	4 W	21	21	26 N	4 W	14	*72
27 N	4 W	4	24	26 N	4 W	23	73
27 N	4 W	9	*25	26 N	4 W	35	75
27 N	4 W	33	*29	25 N	4 W	2	*76
26 N	4 W	4	30	27 N	4 W	12	*85
26 N	4 W	9	*31	27 N	4 W	13	*86
26 N	4 W	21	33	27 N	4 W	24	87
26 N	4 W	33	35	27 N	4 W	25	88
25 N	4 W	9	*37	26 N	4 W	12	91
28 N	4 W	27	42	26 N	4 W	25	94
28 N	4 W	34	43	26 N	4 W	36	95
27 N	4 W	3	*44	25 N	4 W	1	96
27 N	4 W	15	46	25 N	4 W	24	99

* Section with ASCS ground investigation data available to image interpretation team.

6-15-73

ASCS SUPPORT FOR CROP ID TECHNOLOGY ASSESSMENT

BY FIELD SUMMARY OF GROUND OBSERVATIONS #3-96

County White Township 25N Range 4W Section 1 Field 41 + 42

Date 1	Acres est. 2	Crop 3	Height 4	Stage of Maturity 5	Row		Ground Cover 8	Observations 9	Observer 10	JSC Comments 11
					Dir. 6	Width 7				
#41 6-11	40	SOYBEAN	0	1	1	38"	0	42	MANLEY	
6-28	"	"	0.5	"	"	"	2	51	"	
7-16	"	"	1.5	2	1	38"	3	0	"	
8-2	"	"	2.5	3	1	38"	4	0	"	
8-20	"	"	3.5	4	1	38"	4	0	"	
9-7	"	"	3.5	5	1	38"	4	0	"	
9-25	"	"	3.0	6	1	38"	4	0	"	
#42 6-11	40	FIELD CORN	1.0"	1	1	38"	1	42	MANLEY	
6-28	"	"	3.0"	"	"	"	4	0	"	
7-16	"	"	7.5	1	1	38"	4	0	"	
8-2	"	"	8.5	2	1	38"	4	0	"	
8-20	"	"	8.5	2	1	38"	4	0	"	
9-7	"	"	8.5	3	1	38"	4	0	"	
9-25	"	"	8.0	3	1	38"	4	0	"	

6-15-73

ASCS SUPPORT FOR CROP ID TECHNOLOGY ASSESSMENT

BY FIELD SUMMARY OF GROUND OBSERVATIONS

County WhiteTownship 25NRange 4WSection 1Field 43 + 44 #3-96

Date 1	Acres est. 2	Crop 3	Height 4	Stage of Maturity 5	R o w		Ground Cover 8	Observations 9	Observer 10	JSC Comments 11
					Dir. 6	Width 7				
#43 6-11	1	POND	—	—	—	—	—	0	MANLEY	
6-28	"	"	—	—	—	—	4	0	"	
7-16	"	"	—	—	—	—	4	0	"	
8-2	"	POND (DRY)	—	—	—	—	4	0	"	
8-20	"	"	—	—	—	—	4	0	"	
8-24	"	"	—	—	—	—	4	0	"	
9-25	"	"	—	—	—	—	4	0	"	
#44 6-11	1	LANE	—	—	—	—	4	42	MANLEY	
6-28	"	"	—	—	—	—	4	0	"	
7-16	"	"	—	—	—	—	4	0	"	
8-2	1	"	—	—	—	—	4	0	"	
8-20	1	"	—	—	—	—	4	0	"	
8-24	1	"	—	—	—	—	4	0	"	
9-25	1	"	—	—	—	—	4	0	"	

6-15-73

8

ASCS SUPPORT FOR CROP ID TECHNOLOGY ASSESSMENT

BY FIELD SUMMARY OF GROUND OBSERVATIONS #3-96

County White Township 25 N Range 4 W Section 1 Field 45 + 46

Date	Acres est.	Crop	Height	Stage of Maturity	Row		Ground Cover	Observations	Observer	JSC Comments
					Dir.	Width				
1	2	3	4	5	6	7	8	9	10	11
#45 6-11	1	Bldg. SITE	—	—	—	—	4	42	MANLEY	
6-28	"	"	—	—	—	—	4	0	"	
7-16	"	"	—	—	—	—	4	0	"	
8-2	"	"	—	—	—	—	4	0	"	
8-20	"	"	—	—	—	—	4	0	"	
9-7	"	"	—	—	—	—	4	0	"	
9-25	"	"	—	—	—	—	4	0	"	
#46 6-11	20	CLOVER	1.0'	—	0	—	4	11, 12, 42	MANLEY	
6-28	79	Soybeans	.5	1	2	38"	0	0	"	
7-16	"	"	1.0	1	2	38"	1	0	"	
8-2	"	"	2.0	2	2	38"	3	0	"	
8-20	"	"	3.5	4	2	38"	4	0	"	
9-7	"	"	3.5	4	2	38"	4	0	"	
9-25	"	"	3.0	5 + 6	2	38"	4	0	"	

6-15-73

ASCS SUPPORT FOR CROP ID TECHNOLOGY ASSESSMENT

BY FIELD SUMMARY OF GROUND OBSERVATIONS #3-96

County White Township 25 N Range 4 W Section 1 Field 47 + 48

Date 1	Acres est. 2	Crop 3	Height 4	Stage of Maturity 5	Row		Ground Cover 8	Observations 9	Observer 10	JSC Comments 11
					Dir. 6	Width 7				
#47 6-11	35	DISCORD Old Corn Stalks	0.5"	—	0	—	1	11, 12, 42	MANLEY	
#48 6-11	5	BARE SOIL	—	—	0	—	0	0	MANLEY	

ASCS SUPPORT FOR CROP ID TECHNOLOGY ASSESSMENT
 BY FIELD SUMMARY OF GROUND OBSERVATIONS

 County White Township 25N Range 4W Section 1 #3-96 Field 49+50

Date 1	Acres est. 2	Crop 3	Height 4	Stage of Maturity 5	Row		Ground Cover 8	Observations 9	Observer 10	JSC Comments 11
					Dir. 6	Width 7				
#49 6-11	6	DISCORD OLD CORN STALK	0.5	-	0	-	0	11, 12, 42	MANLEY	
#50 6-11	10	BARE SOIL	-	-	0	-	0	0	MANLEY	

6-15-73

ASCS SUPPORT FOR CROP ID TECHNOLOGY ASSESSMENT
 BY FIELD SUMMARY OF GROUND OBSERVATIONS

County White Township 25N Range 4W Section 2 Field 1+2 # 3-76

Date 1	Acres est. 2	Crop 3	Height 4	Stage of Maturity 5	Row		Ground Cover 8	Observations 9	Observer 10	JSC Comments 11
					Dir. 6	Width 7				
#1 6-11	1	Bldg.	—	—	—	—	—	0	MANLEY	
6-28	"	"	—	—	—	—	—	0	"	
7-15	"	"	—	—	—	—	4	0	"	
8-2	"	"	—	—	—	—	4	0	"	
8-21	"	"	—	—	—	—	4	0	"	
9-7	"	"	—	—	—	—	4	0	"	
9-25	"	"	—	—	—	—	4	0	"	
#2 6-11	159	Field Corn	0.5'	1	1	38"	0	42	MANLEY	
6-28	"	"	1.5	"	"	38"	3	0	"	
7-15	"	"	5.0	1	1	38"	4	0	"	
8-2	"	"	8.5	2	1	38"	4	0	"	
8-21	"	"	9.0	2	1	38"	4	0	"	
9-7	"	"	9.0	3	1	38"	4	0	"	
9-25	"	"	8.5	3	1	38"	4	0	"	

6-15-73

ASCS SUPPORT FOR CROP ID TECHNOLOGY ASSESSMENT

BY FIELD SUMMARY OF GROUND OBSERVATIONS

County White Township 25N Range 4W Section 8 #3-17 Field 21+22

Date 1	Acres est. 2	Crop 3	Height 4	Stage of Maturity 5	Row		Ground Cover 8	Observations 9	Observer 10	JSC Comments 11	
					Dir. 6	Width 7					
#24 6-11	10	FIELD Corn	0	1	1	30"	0	11	MEENTS		
6-28	"	"	2.0	"	"	30'	4	0	"		
7-15	"	"	6.0	"	"	"	4	0	"		
8-2	"	"	8.5	2	1	30	4	0	"		
8-20	160	"	8.5	2	1	30	4	0	"		
9-4	"	"	8.5	3	1	30	4	0	"		
9-25	"	"	8.0	3	1	30	4	0	"		
#22 6-11	154	IDLE	—	—	—	—	0	1	MEENTS		
6-24	"	FIELD Corn	.5	1	1	30"	2	0, 54	"		
7-15	"	"	3.0	1	1	"	4	0	"		
8-2	"	"	10.5	1	1	30"	4	0	"		
8-20		WAS LATER Corn Planting - NOW						ALL	Even	"	

6-15-73

ASCS SUPPORT FOR CROP ID TECHNOLOGY ASSESSMENT

BY FIELD SUMMARY OF GROUND OBSERVATIONS

County White Township 25 N Range 4 W Section 9 Field 41 + 42 #3-37

Date	Acres est.	Crop	Height	Stage of Maturity	Row		Ground Cover	Observations	Observer	JSC Comments
					Dir.	Width				
1	2	3	4	5	6	7	8	9	10	11
#41 6-11	26	HAY CLOVER TIMOTHY	1.5'	—	—	—	4	42	MANLEY	
6-27	"	"	.5	—	—	—	"	51	"	
7-15	"	"	1.5	—	—	—	4	1st Cutting IN Bales	"	
8-2	"	"	2.0	—	—	—	4	1st Cutting Bales IN FIELD		
8-20	"	"	2.0	—	—	—	4	13, 51	"	
9-4	"	"	2.0	—	—	—	4	22, 13, 51	"	
1-25	"	"	2.5	—	—	—	4	22, 51	"	
#42 6-11	19	HAY ALFALFA	0	Cut - NOT HARVESTED YET	—	—	4	42	MANLEY	
6-27	"	"	1.0	"	—	—	"	52	"	
7-15	"	"	1.5	—	—	—	4	1st Cutting Bales IN FIELD	"	
8-2	"	"	2.5	—	—	—	4	1st Cutting Bales IN FIELD	"	
8-20	"	"	2.0	—	—	—	4	13, 51	"	
9-4	"	"	"	—	—	—	4	22, 13, 51	"	
1-25	"	"	2.5	—	—	—	4	22, 51	"	

6-15-73

18

ASCS SUPPORT FOR CROP ID TECHNOLOGY ASSESSMENT

BY FIELD SUMMARY OF GROUND OBSERVATIONS #3-37

County White Township 25N Range 4W Section 9 Field 43+44

Date 1	Acres est. 2	Crop 3	Height 4	Stage of Maturity 5	Row		Ground Cover 8	Observations 9	Observer 10	JSC Comments 11
					Dir. 6	Width 7				
#43 6-11	20	HAY CLOVER TIMOTHY	1.5'	—	—	—	4	42	MANLEY	
6-27	"	"	.5	1st Cutting BALED	—	—	4	52	"	
7-15	"	"	1.5	"	—	—	4	0	"	
8-2	"	"	2.5	—	—	—	4	1st Cutting Bales IN FIELD	"	
8-20	"	"	2.0	—	—	—	4	13, 51	"	
9-7	"	"	2.0	—	—	—	4	22, 13, 51	"	
7-25	"	"	2.5	—	—	—	4	22, 51	"	
#44 6-11	69	FIELD CORN	0.5'	1	2	38"	1	42	MANLEY	
6-27	"	"	2.5	"	"	"	3	0	"	
7-15	"	"	6.0	1	2	38"	4	0	"	
8-2	"	"	8.0	2	2	38"	4	0	"	
8-20	"	"	8.0	2	2	38"	4	0	"	
9-7	"	"	8.0	3	2	38"	4	0	"	
7-25	"	"	7.5	3	2	38"	4	0	"	

6-15-73

ASCS SUPPORT FOR CROP ID TECHNOLOGY ASSESSMENT

BY FIELD SUMMARY OF GROUND OBSERVATIONS # 3-37

County WhiteTownship 25NRange 4WSection 9Field 45+46

Date 1	Acres est. 2	Crop 3	Height 4	Stage of Maturity 5	Row		Ground Cover 8	Observations 9	Observer 10	JSC Comments 11
					Dir. 6	Width 7				
#45 6-11	18	Pasture-GRASS	1.5'	—	—	—	4	42	MANLEY	
6-27	"	"	2.5"	—	0	—	4	0	"	
7-15	"	"	3.0	—	—	—	4	0	"	
8-2	"	"	3.0	—	—	—	4	0	"	
8-20	"	"	3.0	—	—	—	4	0	"	
9-7	"	"	1.5	—	—	—	4	23	"	
9-25	"	"	2.0	—	—	—	4	0	"	
#46 6-11	2	Bldg. Abroad	—	—	—	—	2	42	MANLEY	
6-27	"	"	—	—	—	—	4	0	"	
7-15	"	"	—	—	—	—	4	0	"	
8-2	"	"	—	—	—	—	4	0	"	
8-20	"	"	—	—	—	—	4	0	"	
9-7	"	"	—	—	—	—	4	0	"	
9-25	"	"	—	—	—	—	4	0	"	

6-15-73

20

ASCS SUPPORT FOR CROP ID TECHNOLOGY ASSESSMENT

BY FIELD SUMMARY OF GROUND OBSERVATIONS

#3-37

County White Township 25N Range 4W Section 9 Field 44+48

Date 1	Acres est. 2	Crop 3	Height 4	Stage of Maturity 5	Row		Ground Cover 8	Observations 9	Observer 10	JSC Comments 11
					Dir. 6	width 7				
#47 6-11	75	PASTURE BLUEGRASS	1.5	—	—	—	4	42	MANLEY	
6-27	"	"	2.0	—	0	—	4	0	"	
7-15	"	"	2.5	—	—	—	4	23	"	
8-2	"	"	1.0	—	—	—	4	23	"	
8-20	"	"	.5	—	—	—	4	23	"	
9-4	"	"	.5	—	—	—	4	23	"	
9-25	"	"	.5	—	—	—	4	23	"	
#48 6-11	11	DAIS	1.0	—	—	—	4	42, 11, 12	MANLEY	
6-27	"	"	2.5	2	1	7"	4	0	"	
7-15	"	"	.5	Cut-Bales IN field	—	—	4	0	"	
8-2	"	DAIS STUBBLE + GRASS	1.5	—	—	—	4	BALES IN field	"	
8-20	"	"	2.0	—	—	—	4	0	"	
9-4	"	"	3.0	—	—	—	4	0	"	
9-25	"	ALFALFA MELONS	4.0	—	—	—	21	0	"	

6-15-73

ASCS SUPPORT FOR CROP ID TECHNOLOGY ASSESSMENT

BY FIELD SUMMARY OF GROUND OBSERVATIONS

3-37

County White Township 25N Range 4W Section 9 Field 49+50

Date 1	Acres est. 2	Crop 3	Height 4	Stage of Maturity 5	Row		Ground Cover 8	Observations 9	Observer 10	JSC Comments 11
					Dir. 6	Width 7				
# 49 6-11	70	Pasture-Grass	1.5	—	—	—	4	42, 12	MANLEY	
6-27	"	HAY-Grass	.5	—	—	—	4	51	"	
7-15	"	"	1.5	—	—	—	4	0	"	
8-2	"	Pasture-Hay + Grass	2.0	—	—	—	4	0	"	
8-20	"	"	2.0	—	—	—	4	51	"	
9-7	"	HAY+Grass	1.0	—	—	—	4	22, 13, 51	"	
9-25	"	"	1.5	—	—	—	4	22, 13, 51	"	
# 50 6-11	5	HAY ALYALYA	1.0"	—	—	—	4	42	MANLEY	
6-27	"	Oats	2.0"	2	1	7	4	0	"	
7-15	"	"	.5	Cut-Bales Infield	—	—	4	0	"	
8-2	"	"	2.0	—	—	—	4	0	"	
8-20	"	"	2.0	—	—	—	4	0	"	
9-7	"	Grass	2.5	—	—	—	4	0	"	
9-25	"	"	3.0	—	—	—	4	0	"	

6-15-73

22

ASCS SUPPORT FOR CROP ID TECHNOLOGY ASSESSMENT

BY FIELD SUMMARY OF GROUND OBSERVATIONS #3-37

County WHITE Township 25N Range 4W Section 9 Field 51 + 52

Date 1	Acres est. 2	Crop 3	Height 4	Stage of Maturity 5	Row		Ground Cover 8	Observations 9	Observer 10	JSC Comments 11
					Dir. 6	Width 7				
#31 6-11	1	GRASS	1.0"	—	—	—	4	42	MANLEY	
6-27	"	"	"	—	—	—	4	0	"	
7-15	"	"	.5	—	—	—	4	0	"	
8-2	"	"	1.0	—	—	—	4	0	"	
8-20	"	"	1.0	—	—	—	4	0	"	
9-7	"	"	1.0	—	—	—	4	0	"	
9-25	"	"	1.0	—	—	—	4	0	"	
#52 6-11	3	Bldgs. & DRIVES	—	—	—	—	4	42	MANLEY	
6-27	"	"	1.0	—	—	—	"	0	"	
7-15	"	"	—	—	—	—	4	0	"	
8-2	"	"	—	—	—	—	4	0	"	
8-20	"	"	—	—	—	—	4	0	"	
9-7	"	"	—	—	—	—	4	0	"	
9-25	"	"	—	—	—	—	4	0	"	

6-15-73

ASCS SUPPORT FOR CROP ID TECHNOLOGY ASSESSMENT

BY FIELD SUMMARY OF GROUND OBSERVATIONS

County White Township 25N Range 4W Section 9 Field 53+54 ³⁻³⁷

Date 1	Acres est. 2	Crop 3	Height 4	Stage of Maturity 5	Row		Ground Cover 8	Observations 9	Observer 10	JSC Comments 11
					Dir. 6	Width 7				
#33 6-11	45	GRASS PASTURE	1.0'	—	—	—	4	11, 12, 42	MANLEY	
6-27	"	PASTURE GRASS	1.5	—	—	—	4	23	"	
7-15	"	"	1.5	—	—	—	4	23	"	
8-2	"	"	1.0	—	—	—	4	23	"	
8-20	"	"	.5	—	—	—	4	23	"	
8-27	"	"	1.0	—	—	—	4	23	"	
9-25	"	"	1.0	—	—	—	4	23	"	
#54 6-11	2	GRASS PASTURE	1.0'	—	—	—	4	42	MANLEY	
6-27	"	"	1.5	—	—	—	"	23	"	
7-15	2	"	1.0	—	—	—	4	BALES IN FIELD	"	
8-2	"	"	1.0	—	—	—	4	0	"	
8-20	"	"	.5	—	—	—	4	0	"	
8-27	"	"	1.0	—	—	—	4	0	"	
9-25	"	"	1.0	—	—	—	"	0	"	

6-13-13

ASCS SUPPORT FOR CROP ID TECHNOLOGY ASSESSMENT

BY FIELD SUMMARY OF GROUND OBSERVATIONS #3-60

County White Township 25N Range 4W Section 24 Field 41 + 42

Date 1	Acres est. 2	Crop 3	Height 4	Stage of Maturity 5	Row		Ground Cover 8	Observations 9	Observer 10	JSC Comments 11
					Dir. 6	Width 7				
#41 6-11	21	Soybean	0	1	2	30"	0	11, 12	MANLEY	
6-28	"	"	.5	"	"	"	2	0	"	
7-16	"	"	1.0	1	2	30"	5	0	"	
8-2	"	"	2.5	3	2	30"	4	0	"	
8-20	"	"	3.0	3	2	30"	4	0	"	
9-4	"	"	3.0	4	2	30"	4	0	"	
9-25	"	"	3.0	6	2	30"	4	0	"	
#42 6-11	53	FIELD Corn	.5"	1	2	38"	1	0	MANLEY	
6-28	"	"	3.0"	"	1	"	4	"	"	
7-16	"	"	7.5	1	1	38"	4	0	"	
8-2	"	"	9.0	2	1	38"	4	0	"	
8-20	"	"	9.0	2	1	38"	4	0	"	
9-4	"	"	9.0	3	1	38"	4	0	"	
9-25	"	"	8.5	3	1	38"	4	0	"	

6-15-73

26

ASCS SUPPORT FOR CROP ID TECHNOLOGY ASSESSMENT
BY FIELD SUMMARY OF GROUND OBSERVATIONS

3-60

County White Township 25 N Range 4 W Section 27 Field 43+44

Date 1	Acres est. 2	Crop 3	Height 4	Stage of Maturity 5	Row		Ground Cover 8	Observations 9	Observer 10	JSC Comments 11
					Dir. 6	Width 7				
#43 6-11	10	SOYBEAN	.0	1	2	30"	0	0	MANLEY	
6-28	"	"	.5	1	2	"	2	0	"	
7-16	"	"	1.0	1	2	30"	3	0	"	
8-2	"	"	2.5	3	2	30"	4	0	"	
8-20	"	"	3.0	3	2	30"	4	0	"	
9-4	"	"	3.0	4	2	30"	4	0	"	
9-25	"	"	3.0	6	2	30"	4	0	"	
#44 6-11	53	SOYBEAN	0	1	1	30"	0	11	MANLEY	
6-28	"	"	.5	"	"	30"	2	0	"	
7-16	"	"	1.0	1	1	30"	3	0	"	
8-2	"	"	2.5	3	1	30"	4	0	"	
8-20	"	"	3.0	3	1	30"	4	0	"	
9-4	"	"	3.0	4	1	30"	4	0	"	
9-25	"	"	3.0	6	1	30"	4	0	"	

6-10-73

 ASCS SUPPORT FOR CROP ID TECHNOLOGY ASSESSMENT # 3-60
 BY FIELD SUMMARY OF GROUND OBSERVATIONS

 County White Township 25N Range 4W Section 27 Field 45+46

Date 1	Acres est. 2	Crop 3	Height 4	Stage of Maturity 5	Row		Ground Cover 8	Observations 9	Observer 10	JSC Comments 11
					Dir. 6	Width 7				
#45 6-11	35	FIELD CORN	.5'	1	2	30"	2	0	MANLEY	
6-28	"	"	3.0"	"	"	"	4	0	"	
7-16	"	"	7.5	1	2	30"	4	0	"	
8-2	"	"	9.0	2	2	30"	4	0	"	
8-20	"	"	9.0	2	2	30"	4	0	"	
9-7	"	"	9.0	3	2	30"	4	0	"	
9-25	"	"	8.0	3	2	30"	4	0	"	
#46 6-11	35	BARE SOIL	0	-	-	-	0	0	MANLEY	
6-28	"	Soybean	.5	1	1	30"	1	"	"	
7-16	"	"	1.0	1	1	30"	2	0	"	
8-2	"	"	2.5	2	1	30"	4	0	"	
8-20	"	"	3.0	3	1	30"	4	0	"	
9-7	"	"	3.0	4	1	30"	4	5 1	"	
9-25	"	"	2.5	6	1	30"	4	5 1	"	

27

6-15-73

ASCS SUPPORT FOR CROP ID TECHNOLOGY ASSESSMENT

3-60

28

BY FIELD SUMMARY OF GROUND OBSERVATIONS

County White Township 25N Range 4W Section 27 Field 47+48

Date	Acres est.	Crop	Height	Stage of Maturity	Row		Ground Cover	Observations	Observer	JSC Comments
					Dir.	Width				
1	2	3	4	5	6	7	8	9	10	11
#47 6-11	8	CLOVER PASTURE	1.0	—	—	—	4	0	MANLEY	
6-28	"	"	3.0	1	—	—	"	23	"	
7-16	"	"	"	—	—	—	4	"	"	
8-2	"	"	3.0	—	—	—	4	23	"	
8-20	"	"	2.5	—	—	—	4	23	"	
9-4	"	"	2.5	—	—	—	4	23	"	
9-25	"	"	2.0	—	—	—	4	23	"	
#48 6-11	2	Bldg. SITE	—	—	—	—	—	0	MANLEY	
6-28	"	"	—	—	—	—	4	0	"	
7-16	2	"	—	—	—	—	4	0	"	
8-2	2	"	—	—	—	—	4	0	"	
8-20	2	"	—	—	—	—	4	0	"	
9-4	2	"	—	—	—	—	4	0	"	
9-25	2	"	—	—	—	—	4	0	"	

6-15-73

ASCS SUPPORT FOR CROP ID TECHNOLOGY ASSESSMENT

BY FIELD SUMMARY OF GROUND OBSERVATIONS

#3-70

County WhiteTownship 26 NRange 4 WSection 2Field 21+22

30

Date 1	Acres est. 2	Crop. 3	Height 4	Stage of Maturity 5	Row		Ground Cover 8	Observations 9	Observer 10	JSC Comments 11
					Dir. 6	Width 7				
#21 6-11	6.3	FIELD Corn	1.0"	1	2	38"	1	11, 12	MANLEY	
6-27	"	"	2.5"	"	"	"	4	0	"	
7-16	"	"	7.0	1	2	38"	4	0	"	
8-3	"	"	9.0	2	2	38"	4	0	"	
8-21	"	"	9.0	2	2	38"	4	0	"	
9-7	"	"	9.0	3	2	38"	4	0	"	
9-25	"	"	8.5	3	2	38"	4	22	"	
#22 6-11	9	BARE SOIL + NEEDS	0	-	0	-	2	11, 12	MANLEY	
6-27	"	Soybeans	2.5	1	1	30"	0	0	"	
7-16	"	"	1.0	1	1	30"	2	0	"	
8-5	"	"	2.0	2	1	30"	3	0	"	
8-21	"	"	3.5	4	1	30"	4	0	"	
9-7	"	"	3.5	4	1	30"	4	0	"	
9-25	"	"	3.0	5	1	30"	4	0	"	

6-15-73

ASCS SUPPORT FOR CROP ID TECHNOLOGY ASSESSMENT

BY FIELD SUMMARY OF GROUND OBSERVATIONS #3-70

County White Township 26N Range 4W Section 2 Field 23 & 24

Date 1	Acres est. 2	Crop 3	Height 4	Stage of Maturity 5	Row		Ground Cover 8	Observations 9	Observer 10	JSC Comments 11
					Dir. 6	Width 7				
#23 6-11	44	FIELD Corn	1.0"	1	1	38"	2	12	MANLEY	
6-27	"	"	2.5	1	1	"	4	12	"	
7-16	"	"	7.0	"	"	38"	4	0	"	
8-3	"	"	9.0	2	1	38"	4	0	"	
8-21	"	"	9.0	2	1	38	4	0	"	
9-4	"	"	9.0	3	1	38	4	0	"	
9-25	"	"	8.5	3	1	38	4	0.2	"	
#24 6-11	1	LANE	1.0"	-	0	-	3	0	MANLEY	
6-27	"	"	"	-	-	-	3	"	"	
7-16	"	"	-	-	-	-	4	0	"	
8-3	"	"	-	-	-	-	4	0	"	
8-21	"	"	-	-	-	-	4	0	"	
9-4	"	"	-	-	-	-	4	0	"	
9-25	"	"	-	-	-	-	4	0	"	

6-15-73

34

 ASCS SUPPORT FOR CROP ID TECHNOLOGY ASSESSMENT
 BY FIELD SUMMARY OF GROUND OBSERVATIONS

3-31

 County White Township 26N Range 4W Section 9 Field 61+62

Date 1	Acres est. 2	Crop 3	Height 4	Stage of Maturity 5	Row		Ground Cover 8	Observations 9	Observer 10	JSC Comments 11
					Dir. 6	Width 7				
#61 6-11	18	FIELD CORN	1.0"	1	1	38"	1	0	MANLEY	
6-24	"	"	2.5"	1	1	"	4	0	"	
7-15	"	"	7.5	1	1	38	4	0	"	
8-3	"	"	9.0	2	1	38	4	0	"	
8-20	"	"	9.0	2	1	38	4	0	"	
9-7	"	"	9.0	3	1	38	4	0	"	
9-25	"	"	8.0	3	1	38	4	0	"	
#62 6-11	2	Ditch	-	-	-	-	4	0	MANLEY	
6-24	"	"	-	-	-	-	4	0	"	
7-15	2	"	-	-	-	-	4	0	"	
8-3	"	"	-	-	-	-	4	0	"	
8-20	2	"	-	-	-	-	4	0	"	
9-7	2	"	-	-	-	-	4	0	"	
9-25	2	"	-	-	-	-	4	0	"	

6-15-73

ASCS SUPPORT FOR CROP ID TECHNOLOGY ASSESSMENT

BY FIELD SUMMARY OF GROUND OBSERVATIONS #3-31

County White Township 26 N Range 4 W Section 9 Field b3 + b4

Date 1	Acres est. 2	Crop 3	Height 4	Stage of Maturity 5	Row		Ground Cover 8	Observations 9	Observer 10	JSC Comments 11
					Dir. 6	Width 7				
#63 6-11	20	FIELD Corn	0.5"	1	2	38"	0	0	MANLEY	
6-24	"	"	2.5"	"	"	"	4	0	"	
7-15	"	"	7.5'	1	2	38"	4	0	"	
8-2	"	"	9.0'	2	2	38"	4	0	"	
8-20	"	"	9.0	2	2	38	4	0	"	
9-4	"	"	9.0	3	2	38	4	0	"	
9-25	"	"	8.0	3	2	38	4	0	"	
#64 6-11	1	FIELD Corn	0.5"	1	2	38"	0	0	MANLEY	
6-24	"	"	2.5"	"	"	"	4	0	"	
7-15	"	"	7.5	1	2	38	4	0	"	
8-2	"	"	9.0	2	2	38	4	0	"	
8-20	"	"	9.0	2	2	38	4	0	"	
9-4	"	"	9.0	3	2	38	4	0	"	
9-25	"	"	8.0	3	2	38	4	0	"	

6-15-73

 ASCS SUPPORT FOR CROP ID TECHNOLOGY ASSESSMENT
 BY FIELD SUMMARY OF GROUND OBSERVATIONS

#3-31

 County White Township 26N Range 4W Section 9 Field 6.5 + 6.6

36

Date 1	Acres est. 2	Crop 3	Height 4	Stage of Maturity 5	Row		Ground Cover 8	Observations 9	Observer 10	JSC Comments 11
					Dir. 6	Width 7				
#65 6-11	7.5	FIELD Corn	0.5	1	1	38"	0	0	MANLEY	
6-27	"	"	2.5	"	"	"	4	0	"	
7-15	"	"	8.0	2	1	38	4	0	"	
8-2	"	"	9.0	2	1	38	4	0	"	
8-20	"	"	9.0	2	1	38	4	0	"	
9-7	"	"	9.0	3	1	38	4	0	"	
9-25	"	"	8.5	3	1	38	4	22	"	
#66 6-11	1	Bldg. SITE	-	-	-	-	4	0	MANLEY	
6-27	"	"	-	-	-	-	4	0	"	
7-15	1	"	-	-	-	-	4	0	"	
8-2	"	"	-	-	-	-	4	0	"	
8-20	1	"	-	-	-	-	4	0	"	
9-7	"	"	-	-	-	-	4	0	"	
9-25	"	"	-	-	-	-	4	0	"	

6-15-73

 ASCS SUPPORT FOR CROP ID TECHNOLOGY ASSESSMENT
 BY FIELD SUMMARY OF GROUND OBSERVATIONS #3-31
County WhiteTownship 26 NRange 4 WSection 9Field 67 + 68

Date	Acres est.	Crop	Height	Stage of Maturity	R 5 W		Ground Cover	Observations	Observer	JSC Comments
					Dir.	Width				
1	2	3	4	5	6	7	8	9	10	11
#67 6-11	1	Hog House	—	—	—	—	4	0	MANLEY	
6-24	"	"	—	—	—	—	4	"	"	
7-15	1	"	—	—	—	—	—	0	"	
8-2	"	"	—	—	—	—	4	0	"	
8-20	1	"	—	—	—	—	4	0	"	
9-4	1	"	—	—	—	—	4	0	"	
9-25	1	"	—	—	—	—	4	0	"	
#68 6-11	3	Ditch Woods	20"	—	—	—	4	0	MANLEY	
6-24	"	"	"	—	—	—	4	"	"	
7-15	3	"	20"	—	—	—	4	0	"	
8-2	"	"	20"	—	—	—	4	0	"	
8-20	"	"	—	—	—	—	4	0	"	
9-4	"	"	—	—	—	—	4	0	"	
9-25	"	"	—	—	—	—	4	0	"	

6-15-73

ASCS SUPPORT FOR CROP ID TECHNOLOGY ASSESSMENT

BY FIELD SUMMARY OF GROUND OBSERVATIONS

#3-31

38

County White Township 210N Range 4W Section 9 Field 69 & 40

Date 1	Acres est. 2	Crop 3	Height 4	Stage of Maturity 5	Row		Ground Cover 8	Observations 9	Observer 10	JSC Comments 11
					Dir. 6	Width 7				
#69 6-11	30	WHEAT	2.5"	2	4	7"	4	0	MANLEY	
6-27	"	"	3.0	4	4	7"	4	0	"	
7-15	"	Wheat stubble	.5	5	4	7	4	0	"	
8-2	"	"	.5	5	4	7	4	0	"	
8-20	"	Clover & grass	1.5	-	-	-	4	0	"	
9-7	"	"	2.5	-	-	-	4	0	"	
1-25	"	Wheat grass	"	-	-	-	4	0	"	
#70 6-11	10	WEEDS	1.0	-	0	-	4	0	MANLEY	
6-27	"	WEEDS + GRASS	2.5	-	-	-	4	0	"	
7-15	"	" "	.5	-	-	-	4	2.5	"	
8-2	"	"	1.5	-	-	-	4	0	"	
8-20	"	"	2.0	-	-	-	4	0	"	
9-7	"	"	2.5	-	-	-	4	0	"	
1-25	"	"	2.5	-	-	-	4	0	"	

6-15-73

ASCS SUPPORT FOR CROP ID TECHNOLOGY ASSESSMENT
 BY FIELD SUMMARY OF GROUND OBSERVATIONS

County White Township 26N Range 4W Section 14 #3-72 Field 1+2

Date	Acres est.	Crop	Height	Stage of Maturity	Row		Ground Cover	Observations	Observer	JSC Comments
					Dir.	Width				
1	2	3	4	5	6	7	8	9	10	11
#1 6-11	20	BARE SOIL	—	—	—	—	0	0	MANLEY	
6-24	"	Soybean	.5	1	2	30"	4	0	"	
7-16	"	"	1.0	1	2	30"	3	0	"	
8-3	"	"	2.5	3	2	38"	4	0	"	
8-21	"	"	3.5	4	2	38"	4	0	"	
9-7	"	"	3.5	4	2	38"	4	0	"	
9-25	"	"	3.0	5+6	2	38"	4	0	"	
#2 6-11	20	FIELD CORN	1.0	1	1	38"	4	0	MANLEY	
6-24	"	"	2.5	"	"	"	4	0	"	
7-16	20	"	7.0	1	1	38"	4	0	"	
8-3	"	"	9.0	2	1	38"	4	0	"	
8-21	"	"	9.0	2	1	38"	4	0	"	
9-7	"	"	9.0	3	1	38"	4	0	"	
9-25	"	"	8.0	3	1	38"	4	0	"	

6-15-73

44

 ASCS SUPPORT FOR CROP ID TECHNOLOGY ASSESSMENT #3-94
 BY FIELD SUMMARY OF GROUND OBSERVATIONS

 County White Township 26N Range 4W Section 25 Field 142

Date 1	Acres est. 2	Crop 3	Height 4	Stage of Maturity 5	Row		Ground Cover 8	Observations 9	Observer 10	JSC Comments 11
					Dir. 6	Width 7				
#1 6-11	40	FIELD CORN	1.0	1	1	30"	1	0	MANLEY	
6-28	"	"	3.0	"	"	"	4	0	"	
7-16	"	"	7.0	1	1	"	4	0	"	
8-3	"	"	8.5	2	1	30	4	0	"	
8-21	"	"	9.0	2	1	30	4	0	"	
9-7	"	"	9.0	3	1	30	4	0	"	
9-25	"	"	8.0	3	1	30	4	0	"	
#2 6-11	40	SOY BEAN	0	1	1	30"	0	0	MANLEY	
6-28	"	"	1.0	1	1	30"	1	0	"	
7-16	"	"	1.5	2	1	30"	3	0	"	
8-3	"	"	2.5	3	1	30	4	0	"	
8-21	"	"	3.0	4	1	30	4	0	"	
9-7	"	"	3.0	5	1	30	4	0	"	
9-25	"	"	3.0	6	1	30	4	0	"	

6-1-13

 ASCS SUPPORT FOR CROP ID TECHNOLOGY ASSESSMENT
 BY FIELD SUMMARY OF GROUND OBSERVATIONS

#3-94

 County White Township R10N Range 4W Section 25 Field 3+4

Date i	Acres est. 2	Crop 3	Height 4	Stage of Maturity 5	R G W		Ground Cover 8	Observations 9	Observer 10	JSC Comments 11
					Dir. 6	Width 7				
#3 6-11	50	FIELD Corn	1.0	1	1	38"	0	0	MANLEY	
6-28	"	"	3.0	"	"	"	4	0	"	
7-16	"	"	7.5	1	1	38"	4	0	"	
8-3	"	"	9.0	2	1	38"	4	0	"	
8-21	"	"	9.0	2	1	38"	4	0	"	
9-7	"	"	9.0	3	1	38"	4	0	"	
9-25	"	"	8.0	3	1	38"	4	0	"	
#4 6-11	30	BARE SOIL	-	-	-	-	0	0	MANLEY	
6-28	"	Soybean	0.5	1	1	38"	0	0	"	
7-16	"	"	1.0	1	1	38"	2	0	"	
8-3	"	"	2.0	2	1	38"	3	0	"	
8-21	"	"	2.5	3	1	38"	4	0	"	
9-7	"	"	3.0	4	1	38"	4	0	"	
9-25	"	"	3.0	5	1	38"	4	0	"	

45

6-15-73

48

ASCS SUPPORT FOR CROP ID TECHNOLOGY ASSESSMENT
BY FIELD SUMMARY OF GROUND OBSERVATIONS # 3-14

County White Township 26 N Range 4 W Section 29 Field 24+22

Date	Acres est.	Crop	Height	Stage of Maturity	Row		Ground Cover	Observations	Observer	JSC Comments
					Dir.	Width				
1	2	3	4	5	6	7	8	9	10	11
#21 6-11	19	FIELD Corn	0.5"	1	2	38"	0	0	MEENTS	
6-27	"	"	3.0	"	"	"	4	0	"	
7-15	"	"	7.5	1	2	38'	4	0	"	
8-2	"	"	9.0	2	2	33"	4	0	"	
8-20	"	"	9.0	2	2	38"	4	0	"	
9-4	"	"	9.0	3	2	38	4	0	"	
9-25	"	"	8.0	3	2	38	4	0	"	
#22 6-11	8	WHEAT	3.0	2	2	7"	4	0	MEENTS	
6-27	"	"	3.0	4	2	7"	4	0	"	
7-15	"	"	.5	5	2	7	4	0	"	
8-2	"	CLOVER wheat-stubble	1.0	5	2	4	4	0	"	
8-20	"	"	1.0	5	-	-	4	0	"	
9-4	"	Plowed Ground	-	-	-	-	0	4	"	
9-25	"	"	-	-	-	-	0	4	"	

6-15-73

ASCS SUPPORT FOR CROP ID TECHNOLOGY ASSESSMENT

BY FIELD SUMMARY OF GROUND OBSERVATIONS # 3-14

County White Township 26 N Range 4 W Section 29 Field 23 + 24

Date 1	Acres est. 2	Crop 3	Height 4	Stage of Maturity 5	Row		Ground Cover 8	Observations 9	Observer 10	JSC Comments 11
					Dir. 6	Width 7				
6-11	40	FIELD Corn	0.5	1	2	38"	0	0	MEENTS	
6-27	"	"	3.0	"	"	"	4	0	"	
7-15	"	"	8.0	2	2	38"	4	0	"	
8-2	"	"	9.0	2	2	38"	4	0	"	
8-20	"	"	9.0	2	2	38"	4	0	"	
9-7	"	"	9.0	3	2	38"	4	0	"	
9-25	"	"	8.0	3	2	38"	4	0	"	
6-11	9	SOYBEAN	0.5	1	2	38"	0	0	MEENTS	
6-27	"	SOYBEAN	1.0	"	"	"	3	0	"	
7-15	"	"	2.5	3	2	38"	4	0	"	
8-2	"	"	4.0	3	2	38"	4	0	"	
8-20	"	"	4.0	4	2	38"	4	0	"	
9-7	"	"	3.5	5	2	38"	4	0	"	
9-25	"	"	3.0	6	2	38"	4	0	"	

ASCS SUPPORT FOR CROP ID TECHNOLOGY ASSESSMENT
 BY FIELD SUMMARY OF GROUND OBSERVATIONS

3-14

 County White Township 26N Range 4W Section 29 Field 25+26

Date 1	Acres est. 2	Crop 3	Height 4	Stage of Maturity 5	Row		Ground Cover 8	Observations 9	Observer 10	JSC Comments 11
					Dir. 6	Width 7				
#25 6-11	33	FIELD CORN	0.5	1	2	38"	0	0	MEENTS	
6-24	"	FIELD CORN	3.0	1	2	38"	4	0	"	
7-15	"	"	7.5	1	2	"	4	0	"	
8-2	"	"	9.0	2	2	38"	4	0	"	
8-20	"	"	9.0	2	2	38	4	0	"	
9-7	"	"	9.0	3	2	38	4	0	"	
9-25	"	"	8.0	3	2	38	4	0	"	
#26 6-11	6	IDLE	-	-	-	-	2	WEEDY	MEENTS	
6-24	"	"	-	-	-	-	-	1	"	
7-15	"	"	0	1	-	-	0	1	"	
8-2	"	"	0	-	-	-	-	0	"	
8-20	"	"	0	-	-	-	0	1	"	
9-7	"	"	-	-	-	-	0	1	"	
9-25	"	"	-	-	-	-	4	0	"	

6-15-73

ASCS SUPPORT FOR CROP ID TECHNOLOGY ASSESSMENT

BY FIELD SUMMARY OF GROUND OBSERVATIONS #3-14

County WhiteTownship 26NRange 4WSection 29Field 27+28

Date 1	Acres est. 2	Crop 3	Height 4	Stage of Maturity 5	Row		Ground Cover 8	Observations 9	Observer 10	JSC Comments 11
					Dir. 6	Width 7				
#27 6-11	37	FIELD CORN	0.5	1	2	38"	0	0	NEENTS	
6-24	"	"	3.0	"	"	"	4	0	"	
7-15	"	"	7.5	1	2	38"	4	0	"	
8-2	"	"	9.0	2	2	38	4	0	"	
8-20	"	"	9.0	2	2	38	4	0	"	
9-4	"	"	9.0	3	2	38	4	0	"	
9-25	"	"	8.0	3	2	38	4	0	"	
#28 6-11	2	Idle	2.0	-	-	-	4	HIGH NEEDS	NEENTS	
6-24	"	"	"	-	-	-	"	NEEDS + BRUSH	"	
7-15	"	Idle (Weeds + Brush)	3.0	-	-	-	4	0	"	
8-2	"	"	3.5	-	-	-	4	0	"	
8-20	"	"	3.5	-	-	-	4	0	"	
9-4	"	"	5.0	-	-	-	4	0	"	
9-25	"	"	5.0	-	-	-	4	0	"	

6-15-73

54

ASCS SUPPORT FOR CROP ID TECHNOLOGY ASSESSMENT

BY FIELD SUMMARY OF GROUND OBSERVATIONS #3-55

County White Township 26N Range 4W Section 34 Field 41 + 42

Date 1	Acres est. 2	Crop 3	Height 4	Stage of Maturity 5	Row		Ground Cover 8	Observations 9	Observer 10	JSC Comments 11
					Dir. 6	Width 7				
#41 6-11	19	FIELD CORN	1.0"	1	1	38"	2	42	MANLEY	
6-28	"	"	2.5	"	"	"	4	0	"	
7-15	"	"	7.5	2	1	38	4	0	"	
8-2	"	"	8.5	2	1	38	4	0	"	
8-21	"	"	8.5	2	1	38	4	0	"	
9-7	"	"	8.5	3	1	38	4	0	"	
9-25	"	"	8.5	3	1	38	4	0	"	
#42 6-11	50	SOY BEAN	0	1	1	38"	0	42	MANLEY	
6-28	40	"	1.0	1	1	"	2	0	"	
7-15	"	"	2.0	2	1	38"	3	0	"	
8-2	"	"	3.0	3	1	38"	4	0	"	
8-21	"	"	3.5	4	1	38	4	0	"	
9-7	"	"	3.5	5	1	38	4	0	"	
9-25	"	"	3.0	6	1	38	4	0	"	

6-15-73

ASCS SUPPORT FOR CROP ID TECHNOLOGY ASSESSMENT
 BY FIELD SUMMARY OF GROUND OBSERVATIONS

County White Township 26 N Range 4 W Section 34 # 3-55 Field 43+44

Date 1	Acres est. 2	Crop 3	Height 4	Stage of Maturity 5	Row		Ground Cover 8	Observations 9	Observer 10	JSC Comments 11
					Dir. 6	Width 7				
#43 6-11	30	FIELD Corn	0.5'	1	1	38"	0	42	MANLEY	
6-28	10	"	2.5	"	"	"	4	0	"	
7-15	"	"	7.5	2	1	38	4	0	"	
8-2	"	"	8.5	2	1	38	4	0	"	
8-21	"	"	8.5	2	1	38	4	0	"	
9-7	"	"	8.5	3	1	38	4	0	"	
1-25	"	"	7.0	3	1	38	4	32	"	
#44 6-11	1	Bldg.	-	-	-	-	-	0	MANLEY	
6-28	"	"	-	-	-	-	-	0	"	
7-15	1	"	-	-	-	-	-	0	"	
8-2	1	"	-	-	-	-	-	0	"	
8-21	1	"	-	-	-	-	4	0	"	
9-7	1	"	-	-	-	-	4	0	"	
1-25	1	"	-	-	-	-	4	0	"	

6-15-73

ASCS SUPPORT FOR CROP ID TECHNOLOGY ASSESSMENT

BY FIELD SUMMARY OF GROUND OBSERVATIONS # 3-55

56

County White Township Don Range 4 W Section 34 Field 45+46

Date 1	Acres est. 2	Crop 3	Height 4	Stage of Maturity 5	Row		Ground Cover 8	Observations 9	Observer 10	JSC Comments 11
					Dir. 6	Width 7				
#45 6-11	80	FIELD Corn	0.5'	1	2	30"	1	11, 12, 42	MANLEY	
6-28	"	"	2.5	1	2	38"	4	0	"	
7-15	"	"	6.5	1	2	38"	4	0	"	
8-2	"	"	8.5	2	2	38"	4	0	"	
8-21	"	"	8.5	2	2	38"	4	0	"	
9-4	"	"	8.5	3	2	38"	4	0	"	
1-25	"	"	8.0	3	2	38"	4	0	"	
#46 6-11	80	SOY BEAN	0	1	2	30"	0	42	MANLEY	
6-28	"	"	.5	1	"	38"	1	0	"	
7-15	"	"	1.5	2	2	38"	3	0	"	
8-2	"	"	2.5	2	2	38"	4	0	"	
8-21	"	"	3.5	4	2	38"	4	0	"	
9-4	"	"	3.5	5	2	38"	4	0	"	
1-25	"	"	3.0	6	2	38"	4	0	"	

6-15-73

 ASCS SUPPORT FOR CROP ID TECHNOLOGY ASSESSMENT
 BY FIELD SUMMARY OF GROUND OBSERVATIONS

 County WHITE Township 27N Range 4N Section 2 Field 61 + 62 #3-64

Date 1	Acres est. 2	Crop 3	Height 4	Stage of Maturity 5	Row		Ground Cover 8	Observations 9	Observer 10	JSC Comments 11
					Dir. 6	Width 7				
#61 6-8	18	Ditch & Woods			-	-	-		MANLEY	
6-27	"	"			-	-	-	0	"	
7-15	"	"	-	-	-	-	4	0	"	
8-2	"	"	-	-	-	-	4	0	"	
8-20	"	"	-	-	-	-	4	0	"	
9-7	"	"	-	-	-	-	4	0	"	
9-25	"	"	-	-	-	-	4	0	"	
#62 6-8	1	IDLE	1.5"	-	-	-	4	NOT PLOWED	MANLEY	
6-27	"	"	2.0	-	-	-	"	"	"	
7-15	"	"	"	-	-	-	4	0	"	
8-2	"	"	3.0	-	-	-	4	0	"	
8-20	"	"	1.0	-	-	-	4	0	"	
9-7	"	"	1.5	-	-	-	4	0	"	
9-25	"	"	1.5	-	-	-	4	0	"	

6-15-73

ASCS SUPPORT FOR CROP ID TECHNOLOGY ASSESSMENT

BY FIELD SUMMARY OF GROUND OBSERVATIONS #3-64

69

County WHITETownship 27 NRange 4 WSection 2Field 63 + 64

Date 1	Acres est. 2	Crop 3	Height 4	Stage of Maturity 5	Row		Ground Cover 8	Observations 9	Observer 10	JSC Comments 11
					Dir. 6	Width 7				
#63 6-8	58	FIELD CORN	5"	1	2	38"	0	11, 12	MANLEY	
6-27	"	"	1.5'	1	2	38"	3	12, 42	"	
7-15	"	"	7.5	2	2	38"	4	12	"	
8-2	"	"	9.0	2	2	38"	4	12, 42	"	
8-20	"	"	9.0	2	2	38"	4	12	"	
9-7	"	"	9.0	4	2	38"	4	12	"	
9-25	"	"	9.0	3	2	38"	4	0	"	
#64 6-8	8	IDLE	1.0"	-	-	-	4	NOT PLOWED	MANLEY	
6-27	"	"	1.5"	-	-	-	"	0	"	
7-15	"	"	2.0	-	-	-	4	0	"	
8-2	"	"	3.0	-	-	-	4	0	"	
8-20	"	"	3.0	-	-	-	4	0	"	
9-7	"	"	3.5	-	-	-	4	0	"	
9-25	"	"	3.5	-	-	-	4	0	"	

6-15-73

ASCS SUPPORT FOR CROP ID TECHNOLOGY ASSESSMENT

BY FIELD SUMMARY OF GROUND OBSERVATIONS #3-64

County White Township 27N Range 4W Section 2 Field 65+66

Date 1	Acres est. 2	Crop 3	Height 4	Stage of Maturity 5	Row		Ground Cover 8	Observations 9	Observer 10	JSC Comments 11
					Dir. 6	Width 7				
#65 6-8	2.5	TILE	0.5"	-	2	38'	2	CORN STUBBLE	MANLEY	
6-27	"	BARE SOIL	.0	-	-	-	0	1, 3	"	
7-15	2.2	Soybeans	.5	1	2	38"	0	0	"	
8-2	"	"	1.0	1	2	38"	2	11, 43	"	
8-20	"	"	2.5	3	2	38	3	11	"	
9-7	"	"	3.0	4	2	38	4	11	"	
9-25	"	"	3.0	5+6	2	38	4	11	"	
#66 6-8	1.5	PASTURE	1.0"	-	-	-	4	23	MANLEY	
6-27	"	"	1.5	-	-	-	"	"	"	
7-15	"	"	2.0	-	-	-	4	0	"	
8-2	"	"	3.0	-	-	-	4	0	"	
8-20	"	"	3.5	-	-	-	4	0	"	
9-7	"	"	4.0	-	-	-	4	0	"	
9-25	"	"	4.0	-	-	-	4	0	"	

6-10-73

62

 ASCS SUPPORT FOR CROP ID TECHNOLOGY ASSESSMENT
 BY FIELD SUMMARY OF GROUND OBSERVATIONS #3-64

 County WHITE Township 27N Range 4W Section 2 Field 67468

Date 1	Acres est. 2	Crop 3	Height 4	Stage of Maturity 5	R c w		Ground Cover 8	Observations 9	Observer 10	JSC Comments 11
					Dir. 6	Width 7				
#67 6-8	40	Plowed	-	-	-	-	-	1	MANLEY	
6-27	"	FIELD CORN	1.5	1	2	38"	3	2, 11, 12, 42	"	
7-15	"	"	6.0	2	2	38"	4	12	"	
8-2	"	"	3.5	2	2	38"	4	42, 12	"	
8-20	"	"	8.0	2	2	38"	4	12	"	
9-7	"	"	9.5	4	2	38"	4	12	"	
9-25	"	"	8.5	3	2	38"	4	0	"	
#68 6-27	1	IDLE	1.0	-	-	-	4	43	MANLEY	
7-15	"	"	1.0	-	-	-	4	0	"	
8-2	"	"	4.0	-	-	-	4	0	"	
8-20	"	"	3.0	-	-	-	4	0	"	
9-7	"	"	3.0	-	-	-	4	0	"	
9-25	"	"	3.0	-	-	-	4	0	"	

6-15-73

ASCS SUPPORT FOR CROP ID TECHNOLOGY ASSESSMENT #3-44

BY FIELD SUMMARY OF GROUND OBSERVATIONS

County WHITE Township 27N Range 4W Section 3 Field 41 + 42

Date 1	Acres est. 2	Crop 3	Height 4	Stage of Maturity 5	Row		Ground Cover 8	Observations 9	Observer 10	JSC Comments 11
					Dir. 6	Width 7				
#41 6-8	24	SOY BEANS	0	1	1	38"	0	12	MEENTZ	
6-24	"	"	0.5	"	"	"	1	12, 42	"	
7-15	"	"	1.5	2	1	38	3	0	"	
8-2	"	"	2.5	3	1	38"	4	42	"	
8-20	"	"	3.0	3	1	38	4	32	"	
9-4	"	"	3.5	5	1	38	4	32	"	
9-25	"	"	3.5	6	1	38	4	32	"	
#42 6-8	24	IDLE	1.0	-	-	-	4	A FEW TREES	MEENTZ	
6-24	"	"	"	-	-	-	"	"	"	
7-15	"	"	1.5	-	-	-	4	0	"	
8-2	"	"	2.0	-	-	-	4	42	"	
8-20	"	"	3.0	-	-	-	4	0	"	
9-4	"	"	3.5	-	-	-	4	0	"	
9-25	"	"	3.5	-	-	-	4	0	"	

6-15-73

 ASCS SUPPORT FOR CROP ID TECHNOLOGY ASSESSMENT
 BY FIELD SUMMARY OF GROUND OBSERVATIONS

#3-44

 County WHITE Township 27N Range 4W Section 3 Field 43+44

66

Date	Acres est.	Crop	Height	Stage of Maturity	Row		Ground Cover	Observations	Observer	JSC Comments
					Dir.	Width				
1	2	3	4	5	6	7	8	9	10	11
#43 6-8	75	FIELD CORN	1.5"	1	2	38"	0	0	MEENTS	
6-27	"	"	2.0	1	2	"	4	42	"	
7-15	"	"	7.5	2	2	38	4	0	"	
8-3	"	"	8.0	2	2	38'	4	42	"	
8-20	"	"	8.5	2	2	38	4	0	"	
9-7	"	"	8.5	3	2	38	4	0	"	
9-25	"	"	8.5	3	2	38	4	0	"	
#44 6-8	5	Ditch+Woods							MEENTS	
6-27	"	"	-	-	-	-	4	0	"	
7-15	"	"	-	-	-	-	4	0	"	
8-3	"	"	-	-	-	-	4	42	"	
8-20	"	"	-	-	-	-	4	0	"	
9-7	"	"	-	-	-	-	4	0	"	
9-25	"	"	-	-	-	-	4	0	"	

6-15-73

 ASCS SUPPORT FOR CROP ID TECHNOLOGY ASSESSMENT
 BY FIELD SUMMARY OF GROUND OBSERVATIONS

#3-25

 County White Township 27N Range 4W Section 9 Field 41+42

Date 1	Acres est. 2	Crop 3	Height 4	Stage of Maturity 5	Row		Ground Cover 8	Observations 9	Observer 10	JSC Comments 11
					Dir. 6	Width 7				
#41 6-11	34	IDLE	-	-	-	-	0	1	MEENTS	
6-24	"	Soybeans	.5	1	1	38"	"	11, 42	"	
7-15	"	"	1.0	1	1	38"	2	11	"	
8-2	"	"	2.5	2	1	38"	4	11	"	
8-20	"	"	3.5	4	1	38"	4	11	"	
9-1	"	"	3.5	4	1	38"	4	11	"	
9-25	"	"	3.0	5	1	38"	4	11	"	
#42 6-11	32	IDLE	-	-	-	-	0	1	MEENTS	
6-24	"	Soybeans	.5	1	1	30"	1	42	"	
7-15	"	"	1.0	1	1	30"	3	0	"	
8-2	"	"	2.5	2	1	30"	4	0	"	
8-20	"	"	3.5	4	1	30"	4	0	"	
9-1	"	"	3.5	4	1	30"	4	0	"	
9-25	"	"	3.0	5	1	30"	4	0	"	

69

6-15-73

70

ASCS SUPPORT FOR CROP ID TECHNOLOGY ASSESSMENT

BY FIELD SUMMARY OF GROUND OBSERVATIONS #3-25

County White Township 27N Range 4W Section 9 Field 43+44

Date 1	Acres est. 2	Crop 3	Height 4	Stage of Maturity 5	Row		Ground Cover 8	Observations 9	Observer 10	JSC Comments 11
					Dir. 6	Width 7				
#43 6-11	31	IDLE	-	-	-	-	0	1st WEEDY	MEENTS	
6-27	40	BARE SOIL	0	-	-	-	0	3 Soy Beans	"	
7-15	"	Soy Beans	1.0	1	1	38"	2	0	"	
8-2	"	"	1.5	2	1	38"	3	0	"	
8-20	"	"	2.5	3	1	38"	4	0	"	
9-7	"	"	3.0	4	1	38"	4	0	"	
1-25	"	"	3.0	5	1	38"	4	0	"	
#44 6-11	5	Woods	20"	-	-	-	3	0	MEENTS	
6-27	7	"	"	-	-	-	-	-	"	
7-15	7	"	"	-	-	-	4	0	"	
8-2	"	"	"	-	-	-	4	0	"	
8-20	"	"	20'	-	-	-	4	0	"	
9-7	"	"	20	-	-	-	4	0	"	
1-25	"	"	20.0	-	-	-	4	0	"	

6-15-73

 ASCS SUPPORT FOR CROP ID TECHNOLOGY ASSESSMENT
 BY FIELD SUMMARY OF GROUND OBSERVATIONS

#3-25

County WhiteTownship 27 NRange 4 WSection 9Field 45 + 46

Date 1	Acres est. 2	Crop 3	Height 4	Stage of Maturity 5	Row		Ground Cover 8	Observations 9	Observer 10	JSC Comments 11
					Dir. 6	Width 7				
#45 6-11	50	FIELD Corn	0.5"	1	2	30'	0	12	MEENTS	
6-27	39	"	2.0	1	2	40	4	0	"	
7-15	"	"	7.0	2	2	40'	4	0	"	
8-2	"	"	8.5	2	2	40	4	0	"	
8-20	"	"	8.5	2	2	40	4	0	"	
9-4	"	"	8.5	3	2	40	4	0	"	
9-25	"	"	8.0	3	2	40	4	0	"	
#46 6-11	18	IDLE	-	-	-	-	0	1	MEENTS	
6-27	18	BARE SOIL	0	1	1	40"	0	3 Soy Beans	"	
7-15	"	Soy Beans	1.0	1	1	40'	2	0	"	
8-2	"	"	1.5	2	1	40	3	0	"	
8-20	"	"	2.5	3	1	40	4	0	"	
9-4	"	"	3.0	4	1	40	4	0	"	
9-25	"	"	3.0	5	1	40	4	0	"	

6-15-73

72

ASCS SUPPORT FOR CROP ID TECHNOLOGY ASSESSMENT

BY FIELD SUMMARY OF GROUND OBSERVATIONS #3-25

County White Township 27 N Range 4 W Section 9 Field 47 + 48

Date 1	Acres est. 2	Crop 3	Height 4	Stage of Maturity 5	Row		Ground Cover 8	Observations 9	Observer 10	JSC Comments 11
					Dir. 6	Width 7				
#47 6-11	34	IDLE	-	-	-	-	0	1	MEENTS	
6-27	"	Soybeans	0.5	1	1	38'	1		"	
7-15	"	"	1.0	1	1	38'	2	0	"	
8-2	"	"	1.5	2	1	38"	3	11, 43	"	
8-20	"	"	2.5	3	1	38	4	11	"	
9-7	"	"	3.0	4	1	38	4	51	"	
4-25	"	"	3.0	6	4	38	4	51	"	
#48 6-11	4	Highway # 43 + RAILROAD							MEENTS	
6-27	"	"				-	-	0	"	
7-15	4	"	-	-	-	-	4	0	"	
8-2	4	"	-	-	-	-	4	0	"	
8-20	4	"	-	-	-	-	4	0	"	
9-7	4	"	-	-	-	-	4	0	"	
4-25	4	"	-	-	-	-	4	0	"	

6-15-73

ASCS SUPPORT FOR CROP ID TECHNOLOGY ASSESSMENT

BY FIELD SUMMARY OF GROUND OBSERVATIONS #3-85

County White Township 27 N Range 4 W Section 12 Field 41 + 42

Date 1	Acres est. 2	Crop 3	Height 4	Stage of Maturity 5	R o w		Ground Cover 8	Observations 9	Observer 10	JSC Comments 11
					Dir. 6	Width 7				
#41 6-8	65	IDLE	.5"	—	—	—	1	CORN STUBBLE	MEENTS	
6-27	"	IDLE-NEEDS	1.0"	—	—	—	4	0	"	
7-15	"	Soybeans	.5	1	1	38"	0	0	"	
8-2	"	"	1	1	1	38"	3	11, 32	"	
8-20	"	"	1.5	2	1	38"	4	11, 32	"	
9-7	"	"	3.0	4	1	38"	4	11, 32	"	
9-25	"	"	3.0	5	1	38"	4	11, 32, 51	"	
#42 6-8	3	WOODS	20.0'	—	—	—	—	0	MEENTS	
6-27	"	"	"	—	—	—	4	0	"	
7-15	"	"	20.0	—	—	—	4	0	"	
8-2	"	"	"	—	—	—	4	0	"	
8-20	"	"	20.0	—	—	—	4	0	"	
9-7	"	"	20.0	—	—	—	4	0	"	
9-25	"	"	20.0	—	—	—	4	0	"	

6-15-73

76

ASCS SUPPORT FOR CROP ID TECHNOLOGY ASSESSMENT

BY FIELD SUMMARY OF GROUND OBSERVATIONS

#3-85

County White Township 27 N Range 4 W Section 12 Field 43 + 44

Date 1	Acres est. 2	Crop 3	Height 4	Stage of Maturity 5	Row		Ground Cover 8	Observations 9	Observer 10	JSC Comments 11
					Dir. 6	Width 7				
#43 6-8	2	CLOVER	1.0"	-	-	-	4	0	MEENTS	
6-27	"	"	1.5"	-	-	-	4	0	"	
7-15	"	PASTURE CLOVER	.5	-	-	-	4	0	"	
8-2	"	"	.5	-	-	-	4	0	"	
8-20	"	"	.5	-	-	-	4	0	"	
9-4	"	"	.5	-	-	-	4	23	"	
1-25	"	"	.5	-	-	-	4	0	"	
#44 6-8	1	Bldg. SIDE							MEENTS	
6-27	"	"	-	-	-	-	-		"	
7-15	"	"	-	-	-	-	4	0	"	
8-2	"	"	-	-	-	-	4	0	"	
8-20	"	"	-	-	-	-	4	0	"	
9-4	"	"	-	-	-	-	4	0	"	
1-25	"	"	-	-	-	-	4	0	"	

6-15-73

ASCS SUPPORT FOR CROP ID TECHNOLOGY ASSESSMENT

BY FIELD SUMMARY OF GROUND OBSERVATIONS #3085

County White Township 27N Range 4W Section 12 Field 45+46

Date 1	Acres est. 2	Crop 3	Height 4	Stage of Maturity 5	Row		Ground Cover 8	Observations 9	Observer 10	JSC Comments 11
					Dir. 6	Width 7				
#45 6-8	2	PASTURE	1.0"	—	—	—	4	0	MEENTS	
6-27	2	"	1.5"	—	—	—	4	0	"	
7-15	"	"	2.0"	—	—	—	4	0	"	
8-2	"	"	1.0	—	—	—	4	0	"	
8-20	"	"	1.5	—	—	—	4	2.3	"	
9-4	"	"	1.0	—	—	—	4	2.3	"	
9-25	"	"	1.0	—	—	—	4	0	"	
#46 6-8	5	AIRSRIP	1.5"	—	—	—	4	11	MEENTS	
6-27	"	"	1.0"	—	—	—	4	0	"	
7-15	"	"	.5	—	—	—	4	0	"	
8-2	"	"	.5	—	—	—	4	0	"	
8-20	"	"	.5	—	—	—	4	0	"	
9-4	"	"	.5	—	—	—	4	0	"	
9-25	"	"	.5	—	—	—	4	0	"	

6-15-13

78

ASCS SUPPORT FOR CROP ID TECHNOLOGY ASSESSMENT

BY FIELD SUMMARY OF GROUND OBSERVATIONS #3-85

County White Township 27 N Range 4 W Section 12 Field 47 + 48

Date 1	Acres est. 2	Crop 3	Height 4	Stage of Maturity 5	Row		Ground Cover 8	Observations 9	Observer 10	JSC Comments 11
					Dir. 6	Width 7				
#47 6-8	9	IDLE	-	-	-	-	0	1	MEENTS	
6-27	"	FIELD CORN	.5	4	2	38"	0	11	"	
7-15	"	"	1.0	4	2	38"	3	51	"	
8-2	"	"	3.0	4	2	38'	3	11, 32	"	
8-20	"	"	7.0	2	2	38'	4	11, 32	"	
9-7	"	"	8.0	4	2	38'	4	11, 12	"	
9-25	"	"	8.0	3	2	38'	4	11, 12	"	
#48 6-8	10	PASTURE	0.5"	-	-	-	4	0	MEENTS	
6-27	"	GRASS	.5	-	-	-	4	0	"	
7-15	"	"	.5	-	-	-	4	0	"	
8-2	"	"	.5	-	-	-	4	0	"	
8-20	"	"	.5	-	-	-	4	0	"	
9-7	"	"	.5	-	-	-	4	0	"	
9-25	"	"	.5	-	-	-	4	0	"	

6-15-73

ASCS SUPPORT FOR CROP ID TECHNOLOGY ASSESSMENT

BY FIELD SUMMARY OF GROUND OBSERVATIONS ⁴³⁻⁸⁵County WhiteTownship 27 NRange 4 WSection 12Field 49 & 50

Date 1	Acres est. 2	Crop 3	Height 4	Stage of Maturity 5	R o w		Ground Cover 8	Observations 9	Observer 10	JSC Comments 11
					Dir. 6	Width 7				
#49 6-8	12	Bridges ^{CAMP} + Ground							MEENTS	
6-27	"	"	-	-	-	-	4	0	"	
7-15	"	"	-	-	-	-	4	0	"	
8-2	"	"	-	-	-	-	4	0	"	
8-20	"	"	-	-	-	-	4	0	"	
9-4	"	"	-	-	-	-	4	0	"	
9-25	"	"	-	-	-	-	4	0	"	
#50 6-8	30	Idle	1.0"	-	-	-	-	Not Plowed	MEENTS	
6-27	27	Idle-Weeds	1.0	-	-	-	4	0	"	
7-15	22	Soy Beans	.5	1	2	38"	0	0	"	
8-2	"	"	.5	1	2	38"	2	11, 32	"	
8-20	"	"	2.0	2	2	38"	4	11, 32	"	
9-4	"	"	3.0	4	2	38"	4	11, 32	"	
9-25	"	"	3.0	4	2	38"	4	11, 32	"	

6-15-73

 ASCS SUPPORT FOR CROP ID TECHNOLOGY ASSESSMENT
 BY FIELD SUMMARY OF GROUND OBSERVATIONS

#3-85

 County White Township 27N Range 4W Section 12 Field 51+52

08

Date 1	Acres est. 2	Crop 3	Height 4	Stage of Maturity 5	R o w		Ground Cover 8	Observations 9	Observer 10	JSC Comments 11
					Dir. 6	Width 7				
#51 6-8	2	HAY	2.0'	—	—	—	4	0	MEENTS	
6-27	"	"	2.5	—	—	—	4	0	"	
7-15	"	"	.5	—	—	—	4	0	"	
8-2	"	HAY-GRASS	1.0	—	—	—	4	0	"	
8-20	3	"	1.5	—	—	—	4	23	"	
9-7	3	"	1.0	—	—	—	4	0	"	
9-25	3	"	1.5	—	—	—	4	0	"	
#52 6-8	3	HAY	2.0"	—	—	—	4	0	MEENTS	
6-27	"	"	2.5"	—	—	—	4	0	"	
7-15	"	HAY	.5	—	—	—	4	0	"	
8-2	"	HAY-GRASS	1.0	—	—	—	4	0	"	
8-20	"	"	1.5	—	—	—	4	0	"	
9-7	"	"	1.5	—	—	—	4	23	"	
9-25	"	"	1.5	—	—	—	4	23	"	

6-15-73

 ASCS SUPPORT FOR CROP ID TECHNOLOGY ASSESSMENT
 BY FIELD SUMMARY OF GROUND OBSERVATIONS

#3-85

 County White Township 27N Range 4W Section 12 Field 53 & 54

Date 1	Acres est. 2	Crop 3	Height 4	Stage of Maturity 5	Row		Ground Cover 8	Observations 9	Observer 10	JSC Comments 11
					Dir. 6	Width 7				
#53 6-8	1	Bldg. SITE	—	—	—	—	—	0	MEENTS	
6-21	"	"	—	—	—	—	4	0	"	
7-15	1	"	—	—	—	—	4	0	"	
8-2	"	"	—	—	—	—	4	0	"	
8-20	3	Bldg. SITE	—	—	—	—	4	0	"	
9-4	1	"	—	—	—	—	4	0	"	
9-25	1	"	—	—	—	—	4	0	"	
#54 6-24	3	FIELD Corn	5	1	2	38"	0	0	MANLEY	
7-15	"	"	6.0	1	2	38"	3	51	"	
8-2	"	"	4	1	2	38"	4	11	"	
8-20	"	"	7.0	2	2	38"	4	11, 32	"	
9-4	"	"	7.5	3	2	38"	4	11, 32, 51	"	
9-25	"	"	7.5	3	2	38"	4	11, 32	"	

81

6-15-73

82

ASCS SUPPORT FOR CROP ID TECHNOLOGY ASSESSMENT

BY FIELD SUMMARY OF GROUND OBSERVATIONS

#3-85

County White Township 21N Range 4W Section 12 Field 55

#55

Date 1	Acres est. 2	Crop 3	Height 4	Stage of Maturity 5	Row		Ground Cover 8	Observations 9	Observer 10	JSC Comments 11
					Dir. 6	Width 7				
7-15	5	FIELD CORN	1.5	1	2	38	2	0	MANLEY	
8-2	"	"	4	1	2	38	4	11	"	
8-20	"	"	7.0	2	2	38	4	11, 32	"	
9-4	"	"	7.5	3	2	38	4	11, 32	"	
9-25	"	"	7.5	3	2	38	4	11, 32	"	

6-15-75

84

ASCS SUPPORT FOR CROP ID TECHNOLOGY ASSESSMENT #3-86

BY FIELD SUMMARY OF GROUND OBSERVATIONS

County White Township 24N Range 4W Section 13 Field 1 + 2

Date 1	Acres est. 2	Crop 3	Height 4	Stage of Maturity 5	Row		Ground Cover 8	Observations 9	Observer 10	JSC Comments 11
					Dir. 6	Width 7				
#1 6-8	4	IDLE	0.5"	—	—	—	3	Not Plowed	MEENTS	
6-24	"	BARE SOIL	—	—	—	—	—	0	"	
7-15	"	Soybeans	.5	1	2	38"	2	0	"	
8-2	"	"	1.0	1	2	38	3	0	"	
8-20	"	"	2.0	3	2	38	4	0	"	
9-4	"	"	5.0	4	2	38	4	0	"	
9-25	"	"	3.0	5	2	38	4	0	"	
#2 6-8	2	Bldg. Site							MEENTS	
6-24	"	"	—	—	—	—	—	0	"	
7-15	"	"	—	—	—	—	4	0	"	
8-2	"	"	—	—	—	—	4	0	"	
8-20	"	"	—	—	—	—	4	0	"	
9-4	"	"	—	—	—	—	4	0	"	
9-25	"	"	—	—	—	—	4	0	"	

6-15-73

ASCS SUPPORT FOR CROP ID TECHNOLOGY ASSESSMENT

BY FIELD SUMMARY OF GROUND OBSERVATIONS

#3-86

County White Township 27 N Range 4 W Section 13 Field 3 + 4

Date 1	Acres est. 2	Crop 3	Height 4	Stage of Maturity 5	Row		Ground Cover 8	Observations 9	Observer 10	JSC Comments 11
					Dir. 6	Width 7				
#3 6-8	2	BLUE GRASS	1.5'	-	-	-	4	0	MEENTS	
6-27	"	"	2.0	-	-	-	"	"	"	
7-15	"	"	2.5	-	-	-	4	0	"	
8-2	"	"	3.0	-	-	-	4	0	"	
8-20	"	"	3.0	-	-	-	4	0	"	
9-7	"	"	.5	-	-	-	4	0	"	
7-25	"	"	.5	-	-	-	4	0	"	
#4 6-8	9	CLOVER	1.0'	-	-	-	2	0	MEENTS	
6-27	"	"	1.5	-	-	-	4	0	"	
7-15	"	"	2.5	-	-	-	4	0	"	
8-2	"	"	3.0	-	-	-	4	0	"	
8-20	"	"	3.0	-	-	-	4	0	"	
9-7	"	BARE SOIL	-	-	-	-	0	0	"	
7-25	"	"	-	-	-	-	0	0	"	

5-10-73

98

 ASCS SUPPORT FOR CROP ID TECHNOLOGY ASSESSMENT
 BY FIELD SUMMARY OF GROUND OBSERVATIONS #3-86

 County White Township 27N Range 4W Section 13 Field 5+6

Date 1	Acres est. 2	Crop 3	Height 4	Stage of Maturity 5	Row		Ground Cover 8	Observations 9	Observer 10	JSC Comments 11
					Dir. 6	Width 7				
#5 6-8	6.5	FIELD CORN	0.5"	1	1	38"	0	11-12	MEENTS	
6-27	"	"	1.5"	"	"	"	3	"	"	
7-15	130	"	3.5	1	1	38"	4	12	"	
8-2	"	"	8.0	2	1	38	4	12	"	
8-20	"	"	8.5	2	1	38	4	12	"	
9-4	"	"	8.5	3	1	38	4	0	"	
9-25	"	"	8.5	3	1	38	4	0	"	
#6 6-8	26	FIELD CORN	0.5'	1	1	38"	0	11-12	MEENTS	
6-27	"	"	1.5	"	"	"	3	12	"	
7-15	"	"	6.0	1	1	38"	4	12	"	
8-2	"	"	8.0	2	1	38	4	12	"	
8-20	"	"	8.5	2	1	38	4	12	"	
9-4	"	"	8.5	3	1	38	4	0	"	
9-25	"	"	8.5	3	1	38	4	22	"	

6-15-73

ASCS SUPPORT FOR CROP ID TECHNOLOGY ASSESSMENT

BY FIELD SUMMARY OF GROUND OBSERVATIONS #3-86

County White Township 27N Range 4N Section 13 Field 7+8

Date 1	Acres est. 2	Crop 3	Height 4	Stage of Maturity 5	Row		Ground Cover 8	Observations 9	Observer 10	JSC Comments 11
					Dir. 6	Width 7				
#7 6-8	2	Drainage Ditch							MEENTS	
6-27	"	"	-	-	-	-	-	0	"	
7-15	"	"	-	-	-	-	4	0	"	
8-2	"	"	-	-	-	-	4	0	"	
8-20	"	"	-	-	-	-	4	0	"	
8-25	"	"	-	-	-	-	4	0	"	
#8 6-8	65	IDLE	-	-	-	-	2	WEEDY	MEENTS	
6-27	"	FIELD-CORN	.5	1	1	38"	1	12	"	

CROP ID TECHNOLOGY ASSESSMENT
 IDENTIFICATION SUMMARY CITARS 3-46

County WHITE Township 27N Range 4W Section 15

Field No.	Crop	Crop ID Data			R o w		Area (acres)			Comments
		Conf	Date	Source	Dir.	Width	Est.	Meas.	Analyst	
41	CORN						92			6" 6-11
42	Ditch						1			
43	CORN						20			12" 6-11
44	SOYBEANS						35			6" 6-27
45	CORN						10			6" 6-11
46	New Ditch						1			

6-15-73

ASCS SUPPORT FOR CROP ID TECHNOLOGY ASSESSMENT

BY FIELD SUMMARY OF GROUND OBSERVATIONS

County White Township 24N Range 4W Section 15 Field 41+42

#3-4b

Date	Acres est.	Crop	Height	Stage of Maturity	R O W		Ground Cover	Observations	Observer	JSC Comments
					Dir.	Width				
1	2	3	4	5	6	7	8	9	10	11
#41 6-11	92	FIELD CORN	0.5'	1	1	38"	3	11, 12	MANLEY	
6-27	"	"	1.5	"	"	"	4	11, 12, 51	"	
7-15	"	"	3.5	1	1	38"	4	"	"	
8-2	"	"	7.5	2	1	38"	4	11, 12, 32	"	
8-20	"	"	8.0	2	1	38"	4	11, 12, 32	"	
9-4	"	"	8.0	3	1	38"	4	11, 12, 32	"	
9-25	"	"	8.0	3	1	38"	4	11, 12, 32	"	
#42 6-11	1	Ditch	0.5"	-	0	-	4	0	MANLEY	
6-27	"	"	2.0	-	-	-	4	0	"	
7-15	1	"	-	-	-	-	4	0	"	
8-2	"	"	-	-	-	-	4	0	"	
8-20	"	"	-	-	-	-	4	0	"	
9-4	"	"	-	-	-	-	4	0	"	
9-25	"	"	-	-	-	-	4	0	"	

6-15-73

06

 ASCS SUPPORT FOR CROP ID TECHNOLOGY ASSESSMENT
 BY FIELD SUMMARY OF GROUND OBSERVATIONS

#344

 County White Township 24N Range 4W Section 15 Field 43+44

Date 1	Acres est. 2	Crop 3	Height 4	Stage of Maturity 5	Row		Ground Cover 8	Observations 9	Observer 10	JSC Comments 11
					Dir. 6	Width 7				
#43 6-11	20	FIELD CORN	1.0"	1	1	38"	1	11, 12	MANLEY	
6-27	"	"	1.5	1	1	"	4	42	"	
7-15	"	"	5.5	1	1	38	4	0	"	
8-2	"	"	8.5	2	1	38	4	0	"	
8-20	"	"	8.5	2	1	38	4	0	"	
9-4	"	"	8.5	3	1	38	4	0	"	
9-25	"	"	8.0	3	1	38	4	0	"	
#44 6-11	35	BARE SOIL + WEEDS	0	-	0	-	3	12	MANLEY	
6-27	"	Soybeans	.5	1	1	38"	0	42	"	
7-15	35	"	1.0	1	1	38"	2	0	"	
8-2	"	"	3.0	3	1	38"	4	0	"	
8-20	"	"	3.5	3	1	38"	4	0	"	
9-4	"	"	3.5	4	1	38"	4	0	"	
9-25	"	"	3.0	6	1	38"	4	0	"	

6-15-73

 ASCS SUPPORT FOR CROP ID TECHNOLOGY ASSESSMENT
 BY FIELD SUMMARY OF GROUND OBSERVATIONS #3-46

 County White Township 27N Range 4W Section 15 Field 45 & 46

Date 1	Acres est. 2	Crop 3	Height 4	Stage of Maturity 5	Row		Ground Cover 8	Observations 9	Observer 10	JSC Comments 11
					Dir. 6	Width 7				
#45 6-11	10	FIELD CORN	0.5"	1	1	38"	2	0	MANLEY	
6-27	"	"	2.0	"	"	"	4	42	"	
7-15	"	"	6.0	1	1	38	4	0	"	
8-2	"	"	8.5	2	1	38	4	0	"	
8-20	"	"	"	2	1	38	4	0	"	
9-4	"	"	8.5	3	1	38	4	0	"	
9-25	"	"	8.0	3	1	38	4	0	"	
#46 8-20	1	NEW Ditch	-	-	1	-	4	0	MANLEY	
9-4	"	"	-	-	-	-	4	0	"	
9-25	"	"	-	-	-	-	4	0	"	

CROP ID TECHNOLOGY ASSESSMENT
 IDENTIFICATION SUMMARY CITARS 3-06

County WHITE Township 27N Range 4W Section 17

Field No.	Crop	Crop ID Data			Row		Area (acres)			Comments
		Conf	Date	Source	Dir.	Width	Est.	Meas.	Analyst	
41	SOYBEANS						70			6in. 6-27
42	CORN						37			6in 6-11
43	CORN						29			6in 6-11
44	Farmstead						8			
45	CORN						12			6" 6-11
46	ditch						2			

6-15-13

ASCS SUPPORT FOR CROP ID TECHNOLOGY ASSESSMENT

BY FIELD SUMMARY OF GROUND OBSERVATIONS

County WhiteTownship 24 NRange 4 WSection 17Field 41 & 42

#3-06

#41

Date 1	Acres est. 2	Crop 3	Height 4	Stage of Maturity 5	Row		Ground Cover 8	Observations 9	Observer 10	JSC Comments 11	
					Dir. 6	Width 7					
6-11	70	SOY BEANS	—	1	2	38"	0	NEW PLANTING	MEENTS		
6-27	"	"	.5	1	"	"	1	0	"		
7-15	"	"	1.0	1	2	"	3	12	"		
8-2	"	"	2.5	2	2	38"	4	12	"		
8-20	"	"	3.5	3	2	38"	4	0	"		
9-7	"	"	3.5	4	2	38"	4	0	"		
9-25	"	"	3.0	5	2	38"	4	0	"		
#42	6-11	37	FIELD CORN	0.5'	1	2	38"	0	0	MEENTS	
	6-27	"	"	2.0	"	"	3	"	"		
	7-15	"	"	7.0	1	2	38"	4	0	"	
	8-2	"	"	8.5	2	2	38"	4	0	"	
	8-20	"	"	9.0	2	2	38"	4	0	"	
	9-7	"	"	9.0	3	2	38"	4	0	"	
	9-25	"	"	8.0	3	2	38"	4	0	"	

6-15-73

94

ASCS SUPPORT FOR CROP ID TECHNOLOGY ASSESSMENT
BY FIELD SUMMARY OF GROUND OBSERVATIONS # 3-06

County White Township 27 N Range 4 W Section 17 Field 43 + 44

Date 1	Acres est. 2	Crop 3	Height 4	Stage of Maturity 5	Row		Ground Cover 8	Observations 9	Observer 10	JSC Comments 11
					Dir. 6	Width 7				
#43 6-11	29	FIELD CORN	0.5'	1	1	38"	0	0	MEENTS	
6-27	"	"	2.0	1	1	38"	3	0	"	
7-15	"	"	7.0	1	1	38"	4	0	"	
8-2	"	"	8.5	2	1	38"	4	0	"	
8-20	"	"	9.0	2	1	38"	4	0	"	
9-7	"	"	9.0	3	1	38"	4	0	"	
9-25	"	"	8.0	3	1	38"	4	0	"	
#44 6-11	8	FARMSTEAD							MEENTS	
6-27	"	"	—	—	—	—	—	0	"	
7-15	"	"	—	—	—	—	4	0	"	
8-2	"	"	—	—	—	—	4	0	"	
8-20	"	"	—	—	—	—	4	0	"	
9-7	"	"	—	—	—	—	4	0	"	
9-25	"	"	—	—	—	—	4	0	"	

6-15-73

ASCS SUPPORT FOR CROP ID TECHNOLOGY ASSESSMENT

#3-06

BY FIELD SUMMARY OF GROUND OBSERVATIONS

County White Township 27N Range 4W Section 17 Field 45+46

Date 1	Acres est. 2	Crop 3	Height 4	Stage of Maturity 5	Row		Ground Cover 8	Observations 9	Observer 10	JSC Comments 11
					Dir. 6	Width 7				
#45 6-11	12	FIELD CORN	0.5'	1	1	38"	0	0	MEENTS	
6-27	"	"	2.0	"	"	"	3	12	"	
7-15	"	"	7.0	1	1	38"	4	0	"	
8-2	"	"	8.5	2	1	38	4	0	"	
8-20	"	"	9.0	2	1	38	4	0	"	
9-4	"	"	9.0	3	1	38	4	0	"	
9-25	"	"	8.0	3	1	38	4	0	"	
#46 6-11	2	OPEN DITCH							MEENTS	
6-27	"	"	-	-	-	-	-	0	"	
7-15	2	"	-	-	-	-	4	0	"	
8-2	"	"	-	-	-	-	4	0	"	
8-20	2	"	-	-	-	-	4	0	"	
9-4	"	"	-	-	-	-	4	0	"	
9-25	"	"	-	-	-	-	4	0	"	

6-15-73

ASCS SUPPORT FOR CROP ID TECHNOLOGY ASSESSMENT

BY FIELD SUMMARY OF GROUND OBSERVATIONS

3-29

County WhiteTownship 27 NRange 4 WSection 33Field 61 + 62

Date 1	Acres est. 2	Crop 3	Height 4	Stage of Maturity 5	Row		Ground Cover 8	Observations 9	Observer 10	JSC Comments 11
					Dir. 6	Width 7				
#61 6-11	2	FARMSTEAD							MEENTS	
6-27	"	"	-	-	-	-	-	0	"	
7-15	"	"	-	-	-	-	4	0	"	
8-2	"	"	-	-	-	-	4	0	"	
8-20	"	"	-	-	-	-	4	0	"	
9-4	"	"	-	-	-	-	4	0	"	
9-25	"	"	-	-	-	-	4	0	"	
#62 6-11	13	FIELD Corn	0.5'	1	1	38"	0	0	MEENTS	
6-27	"	"	2.0	"	"	"	4	0	"	
7-15	"	"	7.0	2	1	38"	4	0	"	
8-2	"	"	9.0	2	1	38"	4	0	"	
8-20	"	"	9.0	2	1	38"	4	0	"	
9-4	"	"	9.0	3	1	38"	4	0	"	
9-25	"	"	8.0	3	1	38"	4	0	"	

6-15-13

89

ASCS SUPPORT FOR CROP ID TECHNOLOGY ASSESSMENT

BY FIELD SUMMARY OF GROUND OBSERVATIONS

#3-29

County White Township 27 N Range 4 W Section 33 Field 63+64

Date 1	Acres est. 2	Crop 3	Height 4	Stage of Maturity 5	R o w		Ground Cover 8	Observations 9	Observer 10	JSC Comments 11
					Dir. 6	Width 7				
#63 6-11	12	FIELD Corn	0.5'	1	1	38"	0	12	MEENTS	
6-27	"	"	2.0	"	"	"	4	"	"	
7-15	"	"	7.0	2	1	38"	4	12	"	
8-2	"	"	9.0	2	1	38"	4	12	"	
8-20	"	"	9.0	2	1	38"	4	12	"	
9-4	"	"	9.0	3	1	38"	4	12	"	
9-25	"	"	8.0	3	1	38"	4	12	"	
#64 6-11	53	FIELD Corn	0.5'	1	2	38"	0	12	MEENTS	
6-27	"	"	2.0	"	2	"	4	"	"	
7-15	"	"	7.0	2	2	38"	4	12	"	
8-2	"	"	9.0	2	2	38"	4	12	"	
8-20	"	"	9.0	2	2	38"	4	12	"	
9-4	"	"	9.0	3	2	38"	4	12	"	
9-25	"	"	8.0	3	2	38"	4	12	"	

6-15-73

 ASCS SUPPORT FOR CROP ID TECHNOLOGY ASSESSMENT
 BY FIELD SUMMARY OF GROUND OBSERVATIONS

3-29

 County White Township 27N Range 4W Section 33 Field 65+66

Date 1	Acres est. 2	Crop 3	Height 4	Stage of Maturity 5	Row		Ground Cover 8	Observations 9	Observer 10	JSC Comments 11
					Dir. 6	Width 7				
#65 6-11	4	GRASS	2.0	-	-	-	4	0	MEENTS	
6-27	"	"	2.5	-	-	-	4	0	"	
7-15	"	"	"	-	-	-	4	0	"	
8-2	"	"	3.0	-	-	-	4	0	"	
8-20	"	"	3.5	-	-	-	4	0	"	
9-4	"	"	4.0	-	-	-	4	0	"	
9-25	"	"	.5	-	-	-	4	0	"	
#66 6-11	2	FARMSTEAD						-	MEENTS	
6-27	"	"	-	-	-	-	-	0	"	
7-15	"	"	-	-	-	-	4	0	"	
8-2	"	"	-	-	-	-	4	0	"	
8-20	"	"	-	-	-	-	4	0	"	
9-4	"	"	-	-	-	-	4	0	"	
9-25	"	"	-	-	-	-	4	0	"	

6-15-73

ASCS SUPPORT FOR CROP ID TECHNOLOGY ASSESSMENT

3-29

100

BY FIELD SUMMARY OF GROUND OBSERVATIONS

County White Township 27N Range 4W Section 33 Field 67+68

Date 1	Acres est. 2	Crop 3	Height 4	Stage of Maturity 5	Row		Ground Cover 8	Observations 9	Observer 10	JSC Comments 11
					Dir. 6	Width 7				
#67 6-11	33	FIELD CORN	0.5'	1	1	30"	0	12	NEENTS	
6-27	"	"	2.5	"	"	"	4	"	"	
7-15	"	"	7.0	1	1	30	4	12	"	
8-2	"	"	9.0	2	1	30	4	12	"	
8-20	"	"	9.0	2	1	30	4	12	"	
9-4	"	"	9.0	3	1	30	4	12	"	
9-25	"	"	8.5	3	1	30	4	12	"	
#68 6-11	17	IDLE	0.5"	-	-	-	2	NEEDS	NEENTS	
6-27	"	Soybeans	.5"	1	2	38"	1	0	"	
7-15	"	"	1.0	1	2	38"	2	0	"	
8-2	"	"	2.5	2	2	38"	4	0	"	
8-30	"	"	3.5	4	2	38"	4	0	"	
9-4	"	"	3.5	4	2	38"	4	0	"	
9-25	"	"	3.0	5+6	2	38"	4	54	"	

6-15-73

 ASCS SUPPORT FOR CROP ID TECHNOLOGY ASSESSMENT
 BY FIELD SUMMARY OF GROUND OBSERVATIONS

#3-29

 County White Township 24N Range 4W Section 33 Field 69+70

Date	Acres est.	Crop	Height	Stage of Maturity	Row		Ground Cover	Observations	Observer	JSC Comments
					Dir.	Width				
1	2	3	4	5	6	7	8	9	10	11
#69 6-11	2	WOODS	20"	-	-	-	4	0	MEENTS	
6-27	2	"	20'	-	-	-	4	0	"	
7-15	2	"	20"	-	-	-	4	0	"	
8-2	2	"	20'	-	-	-	4	0	"	
8-20	2	"	20"	-	-	-	4	0	"	
9-4	2	"	20.0	-	-	-	4	0	"	
9-25	2	"	20.0	-	-	-	4	0	"	
#70 6-11	16	FIELD Corn	0.5"	1	2	30"	0	NEEDY	MEENTS	
6-27	"	"	2.5	1	2	30'	4	0	"	
7-15	"	"	7.0	2	2	"	4	0	"	
8-2	"	"	9.0	2	2	30"	4	0	"	
8-20	"	"	9.0	2	2	30'	4	0	"	
9-4	"	"	9.0	3	2	30'	4	0	"	
9-25	"	"	7.0	3	2	30'	4	0	"	

6-15-73

ASCS SUPPORT FOR CROP ID TECHNOLOGY ASSESSMENT

BY FIELD SUMMARY OF GROUND OBSERVATIONS

3-29

102

County White Township 24N Range 4W Section 33 Field 71 + 72

Date 1	Acres est. 2	Crop 3	Height 4	Stage of Maturity 5	Row		Ground Cover 8	Observations 9	Observer 10	JSC Comments 11
					Dir. 6	Width 7				
#71 6-11	2	GRASS	1.0"	-	-	-	4	PASTURED	MEENTS	
6-24	"	"	1.5	-	-	-	4	"	"	
7-15	"	"	1.5	-	-	-	4	0	"	
8-2	"	"	2.0	-	-	-	4	0	"	
8-20	"	"	1.0	-	-	-	4	0	"	
9-4	"	"	1.0	-	-	-	4	0	"	
9-25	"	"	.5	-	-	-	4	0	"	
#72 6-11	2	FARMSTEAD						-	MEENTS	
6-24	"	"	-	-	-	-	-	0	"	
7-15	2	"	-	-	-	-	4	0	"	
8-2	"	"	-	-	-	-	4	0	"	
8-20	"	"	-	-	-	-	4	0	"	
9-4	"	"	-	-	-	-	4	0	"	
9-25	"	"	-	-	-	-	4	0	"	

6-15-73

ASCS SUPPORT FOR CROP ID TECHNOLOGY ASSESSMENT

BY FIELD SUMMARY OF GROUND OBSERVATIONS # 3-29

County WHITE Township 27N Range 4W Section 33 Field 73 + 74

Date 1	Acres est. 2	Crop 3	Height 4	Stage of Maturity 5	Row		Ground Cover 8	Observations 9	Observer 10	JSC Comments 11
					Dir. 6	Width 7				
#73 6-11	3	FARMSTEAD						-	MEENTS	
6-27	"	"	-	-	-	-	-	0	"	
7-15	"	"	-	-	-	-	4	0	"	
8-2	"	"	-	-	-	-	4	0	"	
8-20	"	"	-	-	-	-	4	0	"	
9-7	"	"	-	-	-	-	4	0	"	
9-25	"	"	-	-	-	-	4	0	"	
#74 6-11	36	FIELD CORN	0.5'	1	1	30"	0	12	MEENTS	
6-27	"	"	2.5	"	"	"	4	12	"	
7-15	"	"	7.0	2	1	30"	4	12	"	
8-2	"	"	9.0	2	1	30	4	0	"	
8-20	"	"	9.0	2	1	30	4	0	"	
9-7	"	"	9.0	3	1	30	4	0	"	
9-25	"	"	7.5	3	1	30	4	0	"	

6-15-73

CROP ID TECHNOLOGY ASSESSMENT
IDENTIFICATION SUMMARY

CITARS # 3-02

County WHITE

Township 28N

Range 4W

Section 29

Field No.	Crop	Crop ID Data			Row		Area (acres)			Comments
		Conf.	Date	Source	Dir.	Width	Est.	Meas.	Analyst	
1	CORN						40			6" 6-11
2	CORN						40			6" 6-11
3	SOYBEAN						40			6" 6-27
4	SOYBEAN						40			6" 6-27

6-15-73

 ASCS SUPPORT FOR CROP ID TECHNOLOGY ASSESSMENT
 BY FIELD SUMMARY OF GROUND OBSERVATIONS

#3-02

 County WHITE Township 28N Range 4W Section 29 Field 1 & 2

Date 1	Acres est. 2	Crop 3	Height 4	Stage of Maturity 5	Row		Ground Cover 8	Observations 9	Observer 10	JSC Comments 11
					Dir. 6	Width 7				
#1 6-11	40	FIELD CORN	0.5'	1	1	38"	0	0	MANLEY	
6-27	"	"	1.5	"	"	"	4	2, 42	"	
7-15	"	"	6.0	1	1	38"	4	0	"	
8-2	"	"	9.0	2	1	38"	4	0	"	
8-20	"	"	9.0	2	1	38"	4	0	"	
9-7	"	"	9.0	3	1	38"	4	0	"	
9-25	"	"	9.0	3	1	38"	4	0	"	
#2 6-11	40	FIELD CORN	0.5"	1	1	38'	0	0	MANLEY	
6-27	"	"	1.5"	1	1	"	4	2, 42	"	
7-15	"	"	6.0"	1	1	38'	4	0	"	
8-2	"	"	9.0"	2	1	38'	4	0	"	
8-20	"	"	9.0"	2	1	38'	4	0	"	
9-7	"	"	9.0	3	1	38'	4	0	"	
9-25	"	"	9.0	3	1	38'	4	0	"	

6-15-73

 ASCS SUPPORT FOR CROP ID TECHNOLOGY ASSESSMENT
 BY FIELD SUMMARY OF GROUND OBSERVATIONS

 County WHITE Township 28N Range 4W Section 29 #3-02 Field 3+4

106

Date 1	Acres est. 2	Crop 3	Height 4	Stage of Maturity 5	Row		Ground Cover 8	Observations 9	Observer 10	JSC Comments 11
					Dir. 6	Width 7				
#3 6-11	40	BARE SOIL	-	-	-	-	0	0	MANLEY	
6-27	"	Soybean	.5	1	1	38"	1	2, 42	"	
7-15	"	"	1.0	1	1	"	2	0	"	
8-2	"	"	3.0	3	1	38"	4	0	"	
8-20	"	"	3.5	3	1	38"	4	0	"	
9-7	"	"	3.5	4	1	38"	4	0	"	
1-25	"	"	3.5	6	1	38"	4	0	"	
#4 6-11	40	BARE SOIL	-	-	-	-	0	0	MANLEY	
6-27	"	"	.5	1	1	38"	1	2, 42	"	
7-15	"	Soy Beans	1.0	1	1	38"	2	0	"	
8-2	"	"	3.0	3	1	38"	4	0	"	
8-20	"	"	3.5	3	1	38"	4	0	"	
9-7	"	"	3.5	4	1	38"	4	0	"	
1-25	"	"	3.5	6	1	38"	4	0	"	