

JSC 09385

CROP IDENTIFICATION TECHNOLOGY ASSESSMENT  
FOR REMOTE SENSING (CITARS)

VOLUME II

GROUND-TRUTH FIELD OBSERVATIONS OF THE AGRICULTURAL  
STABILIZATION AND CONSERVATION SERVICE

PART 4

LIVINGSTON COUNTY, ILLINOIS



*National Aeronautics and Space Administration*  
**LYNDON B. JOHNSON SPACE CENTER**

*Houston, Texas*

February 1975

CROP IDENTIFICATION TECHNOLOGY ASSESSMENT  
FOR REMOTE SENSING (CITARS)

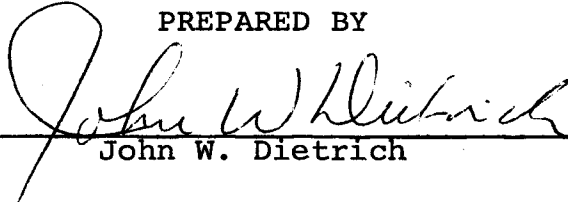
VOLUME II

GROUND-TRUTH FIELD OBSERVATIONS OF THE AGRICULTURAL  
STABILIZATION AND CONSERVATION SERVICE

PART 4

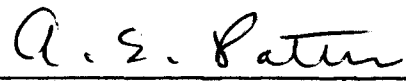
LIVINGSTON COUNTY, ILLINOIS

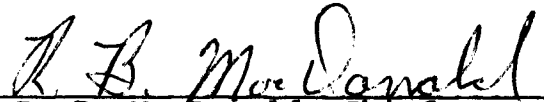
PREPARED BY

  
John W. Dietrich

APPROVED BY

  
Robert M. Bizzell, Project Manager

  
Andrew E. Potter, Acting Chief  
Research, Test, and Evaluation Branch

  
R. B. MacDonald, Chief  
Earth Observations Division

NATIONAL AERONAUTICS AND SPACE ADMINISTRATION  
LYNDON B. JOHNSON SPACE CENTER  
HOUSTON, TEXAS

February 1975

Page ii is blank

iii

#### PREFACE

Volume II has the ground-truth field observations of Huntington, Shelby, and White Counties, Indiana, and Livingston, Fayette, and Lee Counties, Illinois. Part 4: Livingston County, Illinois, contains the handwritten observations in the nonmetric units of measure used by the Agricultural Stabilization and Conservation Service of the U.S. Department of Agriculture.

*Page iv is blank*

v

#### ACKNOWLEDGMENT

The author of this volume acknowledges the Agricultural Stabilization and Conservation Service of the U.S. Department of Agriculture for the compilation of ground-truth field observations in Livingston County.

GLOSSARY

Acre - unit of measure equaling 4,046 meters<sup>2</sup>

ASCS - Agricultural Stabilization and Conservation Service  
of the U.S. Department of Agriculture

CITARS - Crop Identification Technology Assessment for  
Remote Sensing

Co. - county

Conf - confidence, the photointerpreter's estimate, expressed  
in a percentage, of how well he identified the subject  
crop

Dir. - direction

E - east

Est. - estimate

Ground-truth quarter sections - ground observations by the  
Agricultural Stabilization and Conservation Service of  
selected 0.4-kilometer (0.25-mile) sections in each of  
the six selected counties in Indiana and Illinois

ID - identification

Inch - unit of measure equaling 2.54 centimeters<sup>2</sup>

JSC - Lyndon B. Johnson Space Center, Houston, Texas

viii

Meas. - measured

Mile - unit of measure equaling 1,609 meters

N - north

No. - number

Pilot section - one of about 144 sections selected within six counties in Indiana and Illinois for the evaluation of crop proportions in aerial photographs

R - range

Section - a 2.6-kilometer<sup>2</sup> (1-mile<sup>2</sup>) township and range section in the six selected counties in Indiana and Illinois

T - township

Test area segment - a 256-kilometer<sup>2</sup> (100-mile<sup>2</sup>) area measuring 8 by 32 kilometers (5 by 20 miles) selected in each of the six counties in Indiana and Illinois

Test section - one of about 144 sections selected within six counties in Indiana and Illinois for the identification of crops from aerial photographs

TWP - township

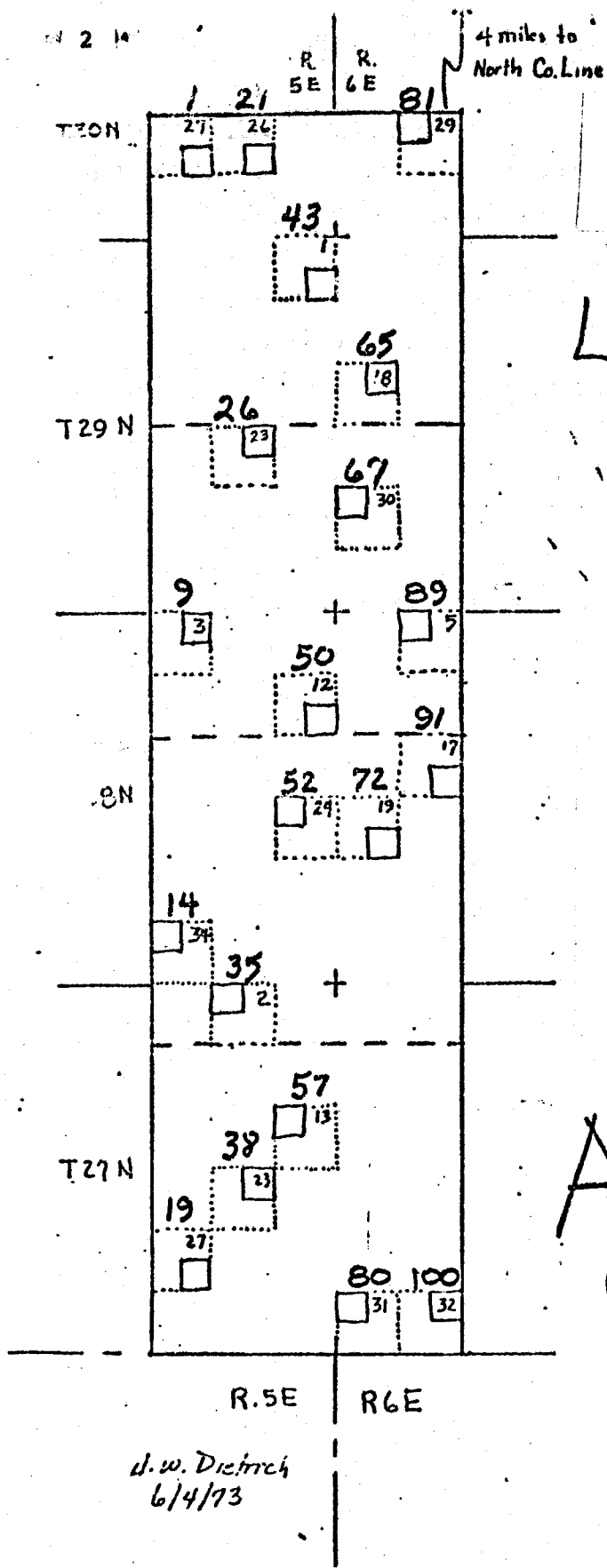
CONTENTS

Section		Page
1.0	<u>GROUND-TRUTH FIELD OBSERVATIONS</u> . . . . .	1

## 1.0 GROUND-TRUTH FIELD OBSERVATIONS

On the following pages appear the ground-truth field observations of Livingston County, Illinois, gathered by the Agricultural Stabilization and Conservation Service of the U.S. Department of Agriculture. The first two figures and table show idealized sketches of the test area segment and the correlation of the new section numbers of the Crop Identification Technology Assessment for Remote Sensing with the old township, range, and section numbers. Using the old numbers, the next tables give the field observations of townships 27, 28, 29, and 30 north. Within each township, ranges and sections are ordered numerically; and within each section, fields are ordered numerically. All abbreviations in the tables are defined in the Glossary.

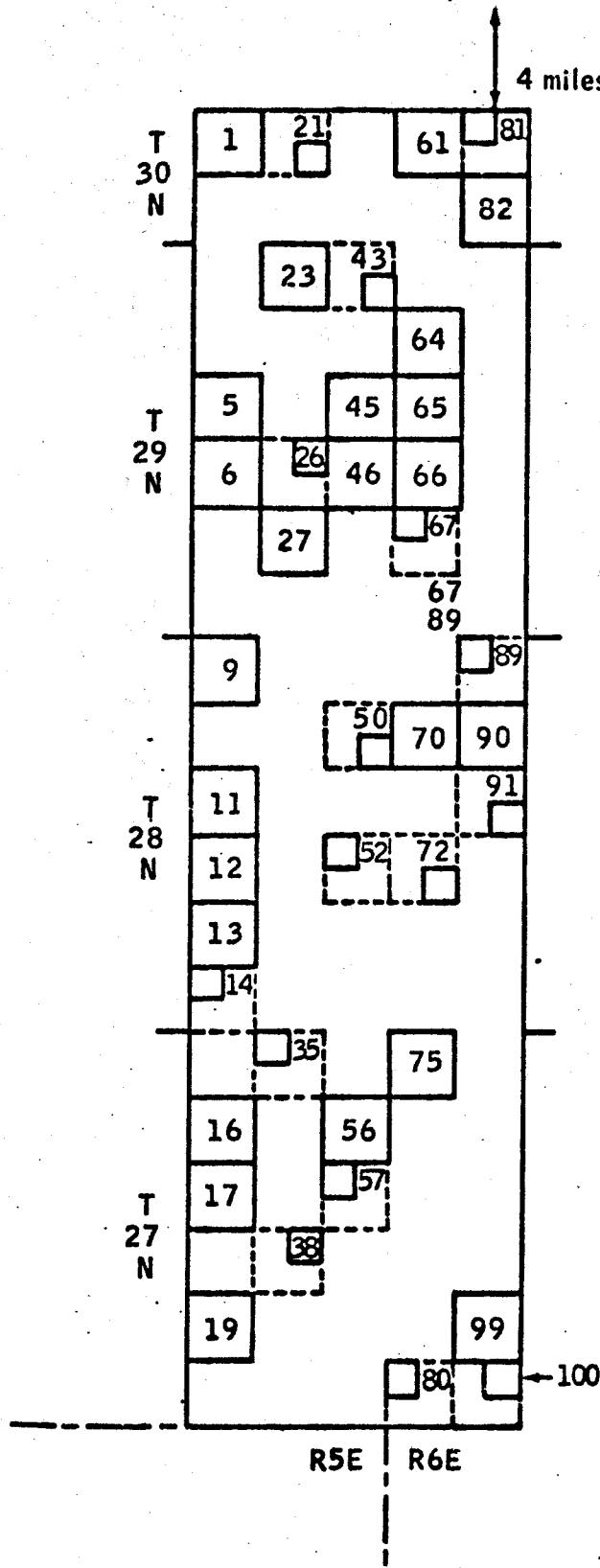




# LIVINGSTON Co. ILLINOIS

Idealized Sketch of  
Ground Investigation Tracts

## ASC'S GROUND OBSERVATIONS



CITARS segment 4

Livingston County

Idealized sketch of test area segment

Quarter-section tract with ASCS data available to image interpreters

Test and pilot sections

SEGMENT 4  
LIVINGSTON COUNTY, ILLINOIS  
CORRELATION OF CITAR SECTION NUMBERS  
WITH THE TOWNSHIP/RANGE/SECTION DESIGNATION

OLD DESIGNATION			NEW SECTION	OLD DESIGNATION			NEW SECTION
TWP	RANGE	SECTION	NO.	TWP	RANGE	SECTION	NO.
30 N	5 E	27	1	28 N	5 E	12	*50
29 N	5 E	15	5	28 N	5 E	24	*52
29 N	5 E	22	6	27 N	5 E	12	56
28 N	5 E	3	9	27 N	5 E	13	*57
28 N	5 E	15	11	30 N	6 E	30	61
28 N	5 E	22	12	29 N	6 E	7	64
28 N	5 E	27	13	29 N	6 E	18	65
28 N	5 E	34	*14	29 N	6 E	19	66
27 N	5 E	10	16	29 N	6 E	30	*67
27 N	5 E	15	17	28 N	6 E	7	70
27 N	5 E	27	19	28 N	6 E	19	*72
30 N	5 E	26	*21	27 N	6 E	6	75
29 N	5 E	2	23	27 N	6 E	31	*80
29 N	5 E	23	*26	30 N	6 E	29	*81
29 N	5 E	26	27	30 N	6 E	32	82
27 N	5 E	2	*35	28 N	6 E	5	*89
27 N	5 E	23	*38	28 N	6 E	8	90
29 N	5 E	1	*43	28 N	6 E	17	*91
29 N	5 E	13	45	27 N	6 E	29	99
29 N	5 E	24	46	27 N	6 E	32	*100

\* Section with ASCS ground investigation data available to image interpretation team.

6-15-73

CROP ID TECHNOLOGY ASSESSMENT CITARS #4-35  
 IDENTIFICATION SUMMARY

County LIVINGSTON Township 27N Range 5E Section 2

Field No.	Crop	Crop ID Data			R o w		Area (acres)			Comments
		Conf	Date	Source	Dir.	Width	Est.	Meas.	Analyst	
01	CORN						42			4" 6-12
02	SOYBEANS						42			2" 6-12
03	Pasture						2			
04	Pasture						4.5			
05	CORN						36			4" 6-12
06	SOYBEANS						35			2" 6-12
07	Hay						2			

6-15

 ASCS SUPPORT FOR CROP ID TECHNOLOGY ASSESSMENT  
 BY FIELD SUMMARY OF GROUND OBSERVATIONS

#4-35

 County Livingston Township 27N Range 5E Section 2 Field 01 + 02

Date 1	Acres est. 2	Crop 3	Height 4	Stage of Maturity 5	R o w		Ground Cover 8	Observations 9	Observer 10	JSC Comments 11
					Dir. 6	Width 7				
01 6-12	42	CORN	4"	1	1	38"	0	2, 41	SELLMYER	
6-29	"	"	22"	"	"	"	2	42, 12	"	
7-17	"	"	60'	1	1	38"	4	41	"	
8-3	"	"	74'	2	1	38"	4	42	"	
8-28	"	"	80'	2	1	38"	4	41	"	
9-8	"	"	80	2	1	38	4	41	"	
9-26	"	"	80	3	1	38	4	42	"	
02 6-12	42	Soybeans	2"	1	1	38"	0	41	SELLMYER	
6-29	"	"	7"	"	"	"	1	42, 12	"	
7-17	42	"	16'	2	1	38"	2	41, 5	"	
8-3	"	"	31'	3	1	38"	4	42, 5	"	
8-28	"	"	30"	4	1	38"	4	41, 5	"	
9-8	"	"	30"	5	1	38"	4	41, 5	"	
9-26	"	"	30	6	1	38	4	42, 5	"	

6-15-13

ASCS SUPPORT FOR CROP ID TECHNOLOGY ASSESSMENT  
BY FIELD SUMMARY OF GROUND OBSERVATIONS

#4-35

County LIVINGSTON Township 27N Range 5E Section 2 Field 03 + 04

Date 1	Acres est. 2	Crop 3	Height 4	Stage of Maturity 5	Row		Ground Cover 8	Observations 9	Observer 10	JSC Comments 11
					Dir. 6	Width 7				
6-12	2	Pasture	14"		0		4	41	SELLMEYER	
6-29	"	"	4"		"		"	42	"	
7-17	"	"	4"		0		4	41	"	
8-3	"	"	6"		0		4	42	"	
8-28	"	"	4"		0		4	41	"	
9-8	"	"	4"		0		4	41	"	
9-26	"	"	4"		0		4	42	"	
6-12	4.5	Pasture	6"		0		4	41, 51	SELLMEYER	
6-29	"	"	4"		"		"	42	"	
7-17	"	"	4"				4	41	"	
8-3	"	"	6"		0		4	42	"	
8-28	"	"	4"		0		4	41	"	
9-8	"	"	4"		0		4	41	"	
9-26	"	"	4"		0		4	42	"	

6-15-73

ASCS SUPPORT FOR CROP ID TECHNOLOGY ASSESSMENT  
BY FIELD SUMMARY OF GROUND OBSERVATIONS

#4-35

8

County Livingston Township R7N Range 5E Section 2 Field 05 + 06

Date	Acres est.	Crop	Height	Stage of Maturity	Row		Ground Cover	Observations	Observer	JSC Comments
					Dir.	Width				
1	2	3	4	5	6	7	8	9	10	11
*05 6-12	36	CORN	4"	1	1	38"	0	41	SELLMYER	
6-29	"	"	22"	"	"	"	2	42, 12, 2	"	
7-17	"	"	72"	1	1	38"	4	41	"	
8-3	"	"	82"	2	1	38"	4	42	"	
8-28	"	"	88	2	1	38	4	41	"	
9-8	"	"	88	2	1	38	4	41	"	
9-26	"	"	88	3	1	38	4	42	"	
*06 6-12	35	Soybeans	2"	1	1	38"	0	41	SELLMYER	
6-29	"	"	4"	"	"	"	1	42, 12	"	
7-17	"	"	22"	2	1	38"	3	41	"	
8-3	"	"	30"	3	1	38"	4	42	"	
8-28	"	"	26"	4	1	38	4	41	"	
9-8	"	"	26"	5	1	38	4	41	"	
9-26	"	"						42, 21	"	

6-15-3

ASCS SUPPORT FOR CROP ID TECHNOLOGY ASSESSMENT  
 BY FIELD SUMMARY OF GROUND OBSERVATIONS

# 4-35

County LIVINGSTON Township 27N Range 5E Section 2 Field 04

Date 1	Acres est. 2	Crop 3	Height 4	Stage of Maturity 5	Row		Ground Cover 8	Observations 9	Observer 10	JSC Comments 11
					Dir. 6	Width 7				
#04 6-12	2	HAY	3"		0		4	41, 52	SELLMYER	
6-29	"	"	7"		"		"	42	"	
7-17	"	"	7"				4	41	"	
8-3	"	"	3"		0		4	42	"	
8-28	"	"	4"		0		4	41	"	
9-8	"	"	4"		0		4	41	"	
9-26	"	"	4"		0		4	42	"	

6



CROP ID TECHNOLOGY ASSESSMENT  
 IDENTIFICATION SUMMARY **CITARS # 4-57**

County LIVINGSTON Township 27N Range 5E Section 13

Field No.	Crop	Crop ID Data			R o w		Area (acres)			Comments
		Conf	Date	Source	Dir.	Width	Est.	Meas.	Analyst	
01	SOYBEANS						51			2" 6-12
02	CORN						27			6" 6-12
03	SOYBEANS						48			3" 6-12
04	SOYBEANS						30			2" 6-12

6-15-73

 ASCS SUPPORT FOR CROP ID TECHNOLOGY ASSESSMENT  
 BY FIELD SUMMARY OF GROUND OBSERVATIONS

#4-57

 County LIVINGSTON Township 27 N Range 5 E Section 13 Field 01 + 02

Date 1	Acres est. 2	Crop 3	Height 4	Stage of Maturity 5	Row		Ground Cover 8	Observations 9	Observer 10	JSC Comments 11
					Dir. 6	Width 7				
#01 6-12	51	Soybeans	2"	1	2	30"	0	41	SELLMYER	
6-29	"	"	8"	"	"	30"	1	42	"	
7-17	"	"	22'	2	2	30'	3	41	"	
8-3	"	"	33"	3	2	30"	4	42	"	
8-28	"	"	30"	5	2	30'	4	41	"	
9-8	"	"	30"	5	2	30'	4	41	"	
9-26	"	"	30'	6	2	30'	3	42 51	"	
#02 6-12	27	CORN	6"	1	2	30"	1	41	SELLMYER	
6-29	"	"	24"	"	"	"	4	42	"	
7-17	"	"	72'	1	2	30'	4	41	"	
8-3	"	"	80"	2	2	30'	4	42	"	
8-28	"	"	82"	2	2	30"	4	41	"	
9-8	"	"	80"	2	2	30"	4	41	"	
9-26	"	"	80'	3	2	30'	4	42	"	

6-1-73

 ASCS SUPPORT FOR CROP ID TECHNOLOGY ASSESSMENT  
 BY FIELD SUMMARY OF GROUND OBSERVATIONS

#4-57

12

 County LIVINGSTON Township 27N Range 5E Section 13 Field 03 + 04

Date 1	Acres est. 2	Crop 3	Height 4	Stage of Maturity 5	Row		Ground Cover 8	Observations 9	Observer 10	JSC Comments 11
					Dir. 6	Width 7				
#03 6-12	48	Soybeans	3"	1	1	30"	0	41	SELLMYER	
6-29	"	"	9"	"	"	30"	2	42, 2	"	
7-17	"	"	23'	2	1	30'	3	41	"	
8-3	"	"	31"	3	1	30"	4	42	"	
8-28	"	"	30"	5	1	30"	4	41	"	
9-8	"	"	30"	5	1	30'	4	41	"	
9-26	"	"						24 27 52 42	"	
#04 6-12	30	Soybeans	2"	1	1	30"	0	41	SELLMYER	
6-29	"	"	6"	1	"	"	1	42, 12	"	
7-17	"	"	20'	2	1	30'	3	41	"	
8-3	"	"	26"	3	1	30"	4	42	"	
8-28	"	"	30"	5	1	30	4	41	"	
9-26	"	"						21, 42	"	

6-15-73

13

CROP ID TECHNOLOGY ASSESSMENT  
IDENTIFICATION SUMMARY

CITAes # 4-38

County LIVINGSTON Township 27N Range 5E Section 23

Field No.	Crop	Crop ID Data			R o w		Area (acres)			Comments
		Conf	Date	Source	Dir.	Width	Est.	Meas.	Analyst	
21	CORN						82			4" 6-12
22	SOYBEANS						75.5			2" 6-12

6-15 3

 ASCS SUPPORT FOR CROP ID TECHNOLOGY ASSESSMENT  
 BY FIELD SUMMARY OF GROUND OBSERVATIONS

#4-38

14

 County LIVINGSTON Township 27N Range 5E Section 23 Field 21 + 22

Date 1	Acres est. 2	Crop 3	Height 4	Stage of Maturity 5	R o w		Ground Cover 8	Observations 9	Observer 10	JSC Comments 11
					Dir. 6	Width 7				
#21 6-12	82	CORN	4"	1	1	30"	1	2, 41	SELLMYER	
6-29	"	"	24"	1	1	"	3	42, 12	"	
7-17	"	"	60"	1	1	30"	4	41	"	
8-3	"	"	90"	2	1	30"	4	42	"	
8-28	"	"	90"	2	1	30"	4	41	"	
9-8	"	"	88"	2	1	30"	4	41	"	
9-26	"	"	88"	3	1	30"	4	42	"	
#22 6-12	75.5	Soybeans	2"	1	1	30"	0	41	SELLMYER	
6-29	"	"	8"	"	"	"	1	42, 12	"	
7-17	"	"	18"	2	1	30"	3	41, 5	"	
8-3	"	"	34"	3	1	30"	4	42, 5, 51	"	
8-28	"	"	34"	4	1	30"	4	41 5 51	"	
9-8	"	"	32"	5	1	30"	4	41 5 51	"	
9-26	"	"	32"	6	1	30"	3	42, 5, 51	"	

6-15-73

CROP ID TECHNOLOGY ASSESSMENT  
IDENTIFICATION SUMMARY

CITARS # 4-19

County LIVINGSTON Township 27 N Range 5 E Section 27

Field No.	Crop	Crop ID Data			Row		Area (acres)			Comments
		Conf.	Date	Source	Dir.	Width	Est.	Meas.	Analyst	
41	SOYBEANS						75			1.5" 6/12
42	CORN						32			8" 6/12
43	SOYBEANS						43			3" 6/12
Some replanting of Soybeans in fields 41 and 43 noted on 7/17										

ASCS SUPPORT FOR CROP ID TECHNOLOGY ASSESSMENT  
 BY FIELD SUMMARY OF GROUND OBSERVATIONS

# 4-19

 County Livingston Township 27N Range 5E Section 27 Field 41 + 42

Date	Acres est.	Crop	Height	Stage of Maturity	Row		Ground Cover	Observations	Observer	JSC Comments
					Dir.	Width				
1	2	3	4	5	6	7	8	9	10	11
#41 6-12	75	Soybeans	1.5"	1	1	30"	0	41	Sellmyer	
6-29	"	"	6"	"	"	"	1	42, 12	"	
7-17	"	"	16"	2	1	30"	3	44, 5	"	
8-3	"	"	32"	3	1	30"	4	42, 5	"	
8-28	"	"	32	4	1	30	4	41, 5	"	
9-8	"	"	32	5	1	30	4	41, 5	"	
9-26	"	"	32	6	1	30	3	42, 5	"	
#42 6-12	32	Corn	8"	1	1	38"	1	41	Sellmyer	
6-29	"	"	24"	"	"	"	3	42, 2	"	
7-17	"	"	66"	1	1	38"	4	41	"	
8-3	"	"	80"	2	1	38"	4	42	"	
8-28	"	"	88"	2	1	38"	4	41	"	
9-8	"	"	88	2	1	38	4	41	"	
9-26	"	"	88	3	1	38	4	42	"	

6-15-73

ASCS SUPPORT FOR CROP ID TECHNOLOGY ASSESSMENT  
BY FIELD SUMMARY OF GROUND OBSERVATIONS

#4-19

County LIVINGSTON Township 27 N Range 5 E Section 27 Field 43

#43

Date 1	Acres est. 2	Crop 3	Height 4	Stage of Maturity 5	Row		Ground Cover 8	Observations 9	Observer 10	JSC Comments 11
					Dir. 6	Width 7				
6-19	43	Soybeans	3"	1	1	38"	0	41	Sellmyer	
6-29	"	"	10"	"	"	"	2	42, 12	"	
7-17	"	"	24'	2	1	38"	3	41, 5	"	
8-3	"	"	32'	3	1	38"	4	42, 5	"	
8-28	"	"	36"	4	1	38"	4	41, 5	"	
9-8	"	"	34"	4	1	38"	4	41, 5	"	
9-26	"	"	34"	6	1	38"	4	42, 5	"	



18 6-15-73

CROP ID TECHNOLOGY ASSESSMENT CITARS # 4-80  
IDENTIFICATION SUMMARY

County LIVINGSTON Township 27N Range 6E Section 31

Field No.	Crop	Crop ID Data			R o w		Area (acres)			Comments
		Conf	Date	Source	Dir.	Width	Est.	Meas.	Analyst	
01	CORN						78			6" 6-12
02	CORN						28			6" 6-12
03	SOYBEANS						45			2" 6-12
04	CORN						18			8" 6-12

6-15-73

 ASCS SUPPORT FOR CROP ID TECHNOLOGY ASSESSMENT  
 BY FIELD SUMMARY OF GROUND OBSERVATIONS

# 4-80

 County LIVINGSTON Township 27N Range 6E Section 31 Field 01 + 02

Date 1	Acres est. 2	Crop 3	Height 4	Stage of Maturity 5	Row		Ground Cover 8	Observations 9	Observer 10	JSC Comments 11
					Dir. 6	Width 7				
#01 6-12	78	CORN	6"	1	1	30"	1	41, 2	SELLMYER	
6-29	"	"	26"	"	"	"	4	42	"	
7-17	"	"	66'	1	1	30'	4	41	"	
8-3	"	"	80"	2	1	30"	4	42	"	
8-28	"	"	82"	2	1	30'	4	41	"	
9-8	"	"	82	2	1	30	4	41	"	
9-26	"	"	82	3	1	30	4	42	"	
#02 6-12	28	Corn	6"	1	2	38'	1	41	SELLMYER	
6-29	"	"	34"	"	"	"	4	42	"	
7-17	"	"	84'	2	2	38"	4	41	"	
8-3	"	"	86"	2	2	38"	4	42	"	
8-28	"	"	86"	2	2	38	4	41	"	
9-8	"	"	88	2	2	38	4	41	"	
9-26	"	"	88	3	2	38	4	42	"	

6-15-73

20

## ASCS SUPPORT FOR CROP ID TECHNOLOGY ASSESSMENT

BY FIELD SUMMARY OF GROUND OBSERVATIONS

#480

County LIVINGSTON Township Q7N Range 6E Section 31 Field 03 + 04

Date 1	Acres est. 2	Crop 3	Height 4	Stage of Maturity 5	Row		Ground Cover 8	Observations 9	Observer 10	JSC Comments 11
					Dir. 6	Width 7				
#03 6-12	45	Soybeans	2"	4	2	38"	0	41	SELLMYER	
6-29	"	"	12"	"	"	"	2	42, 12	"	
7-17	"	"	24"	2	2	38"	3	41	"	
8-3	"	"	34"	3	2	38"	4	42	"	
8-28	"	"	36"	4	2	38	4	41	"	
9-8	"	"	32	5	2	38	4	41	"	
9-26	"	"	32	6	2	38	3	42	"	
#04 6-12	18	CORN	8"	4	2	38"	4	41	SELLMYER	
6-29	"	"	34"	"	"	"	4	42	"	
7-17	"	"	84"	2	2	38"	4	41	"	
8-3	"	"	86"	2	2	38"	4	42	"	
8-28	"	"	92	2	2	38	4	41	"	
9-8	"	"	90"	2	2	38	4	41	"	
9-26	"	"	90"	3	2	38	4	42	"	

6-15-73

21

CROP ID TECHNOLOGY ASSESSMENT  
IDENTIFICATION SUMMARY

CITARS # 4-100

County LIVINGSTON Township 27N Range 6E Section 32

Field No.	Crop	Crop ID Data			Row		Area (acres)			Comments
		Conf	Date	Source	Dir.	Width	Est.	Meas.	Analyst	
21	CORN						19			8" 6-12
22	SOYBEANS						95			1/2" 6-12
23	CORN						40			4" 6-12

6-15-73

22

## ASCS SUPPORT FOR CROP ID TECHNOLOGY ASSESSMENT

BY FIELD SUMMARY OF GROUND OBSERVATIONS

#4-100

County LIVINGSTON Township 27N Range 6E Section 32 Field 24+22

Date 1	Acres est. 2	Crop 3	Height 4	Stage of Maturity 5	Row		Ground Cover 8	Observations 9	Observer 10	JSC Comments 11
					Dir. 6	Width 7				
#21 6-12	40	Corn	8"	1	2	38"	1	41	SELLMYER	
6-29	18.8	"	36"	"	"	"	4	42, 12	"	
7-17	"	"	72'	1	2	38'	4	41	"	
8-3	"	"	84"	2	2	38"	4	42	"	
8-28	"	"	84"	2	2	38"	4	41	"	
9-8	"	"	84"	2	2	38"	4	41	"	
9-26	"	"	84'	3	2	38	4	42	"	
#22 6-12	18.8	Soybeans	.5"	1	2	38"	0	41, 1	SELLMYER	
6-29	95.2	"	6"	"	"	"	1	42, 12	"	
7-17	"	"	14'	2	2	38'	2	41, 5	"	
8-3	"	"	30"	3	2	38"	3	42, 5	"	
8-28	"	"	36"	4	2	38"	4	41, 5	"	
9-8	"	"	36"	5	2	38"	4	41, 5	"	
9-26	"	"	32	6	2	38	2	42, 5	"	

6-15-73

ASCS SUPPORT FOR CROP ID TECHNOLOGY ASSESSMENT  
BY FIELD SUMMARY OF GROUND OBSERVATIONS

#4-100

County LIVINGSTON Township 27N Range 6E Section 32 Field 23#  
23

Date 1	Acres est. 2	Crop 3	Height 4	Stage of Maturity 5	Row		Ground Cover 8	Observations 9	Observer 10	JSC Comments 11
					Dir. 6	Width 7				
6-12	95.2	Corn	4"	1	2	38"	0	41	SELLMYER	
6-29	40	"	24"	"	"	"	3	42	"	
7-17	"	"	72'	1	2	38"	4	41, 5	"	
8-3	"	"	84'	2	2	38"	4	42, 5	"	
8-28	"	"	84	2	2	38"	4	41, 5	"	
9-8	"	"	84	2	2	38	4	41, 5	"	
9-23	"	"	84	3	2	38	4	49, 5	"	

23

CROP ID TECHNOLOGY ASSESSMENT  
 IDENTIFICATION SUMMARY

CITAes # 4-9

County LIVINGSTON Township 28N Range 5E Section 3

Field No.	Crop	Crop ID Data			R o w		Area (acres)			Comments
		Conf	Date	Source	Dir.	Width	Est.	Meas.	Analyst	
21	SOYBEANS						49			2" 6-13
22	CORN						27			4" 6-13
23	CORN						2.5			8" 6-13
24	CORN						71			8" 6-13

6-15-,3

## ASCS SUPPORT FOR CROP ID TECHNOLOGY ASSESSMENT

BY FIELD SUMMARY OF GROUND OBSERVATIONS

# 4-9

County LIVINGSTON Township 28 N Range 5 E Section 3 Field 24+22

Date 1	Acres est. 2	Crop 3	Height 4	Stage of Maturity 5	Row		Ground Cover 8	Observations 9	Observer 10	JSC Comments 11
					Dir. 6	Width 7				
#21 6-13	49	Soybeans	2"	1	1	38"	0	41 2	SELLMYER	
7-2	"	"	8"	"	"	38"	1	42	"	
7-17	"	"	18"	2	1	38"	3	41	"	
8-3	"	"	32"	3	1	38"	4	42	"	
8-29	"	"	32"	4	1	38"	4	41	"	
9-9	"	"	32'	5	1	38"	4	42	"	
9-24	"	"						42, 21, 51	"	
#22 6-13	27	CORN	4"	1	1	38"	1	41	SELLMYER	
7-2	"	"	20"	"	"	"	2	42, 2, 12	"	
7-17	"	"	74"	1	1	38"	4	41	"	
8-3	"	"	80"	2	1	38"	4	42	"	
8-29	"	"	82"	2	1	38"	4	41	"	
9-9	"	"	82"	2	1	38"	4	42	"	
9-24	"	"	82"	3	1	38"	4	42	"	



## ASCS SUPPORT FOR CROP ID TECHNOLOGY ASSESSMENT

## BY FIELD SUMMARY OF GROUND OBSERVATIONS #4-9

County LIVINGSTON Township 28 N Range 5 E Section 3 Field 23 + 24

Date	Acres est.	Crop	Height	Stage of Maturity	Row		Ground Cover	Observations	Observer	JSC Comments
					Dir.	Width				
1	2	3	4	5	6	7	8	9	10	11
#23 6-13	2.5	CORN	8"	1	2	38"	4	41	SELLMYER	
7-2	"	"	30"	"	"	"	3	42, 2	"	
7-17	"	"	84"	1	2	38"	4	41	"	
8-3	"	"	90"	2	2	38"	4	42	"	
8-29	"	"	90"	2	2	38"	4	41	"	
9-9	"	"	90"	2	2	38"	4	42	"	
9-24	"	"	90"	3	2	38"	4	42	"	
#24 6-13	41	CORN	8"	1	1	38"	4	41	SELLMYER	
7-2	"	"	30"	"	"	"	3	42, 2	"	
7-17	41	"	72"		1	38"	4	41	"	
8-3	"	"	80"	2	1	38"	4	42	"	
8-29	"	"	82"	2	1	38"	4	41	"	
9-9	"	"	82"	2	1	38"	4	42	"	
9-24	"	"	82"	3	1	38"	4	42	"	

6-15-73

27

CROP ID TECHNOLOGY ASSESSMENT CITORS # 4-50  
IDENTIFICATION SUMMARY

County LIVINGSTON Township 28 N Range 5 E Section 12

Field No.	Crop	Crop ID Data			Row		Area (acres)			Comments
		Conf	Date	Source	Dir.	Width	Est.	Meas.	Analyst	
41	SOYBEANS						5			2" 6-13
42	SOYBEANS						65			2" 6-13
43	CORN						50			4" 6-13
44	SOYBEANS						22			2" 6-13

6-15-73

 ASCS SUPPORT FOR CROP ID TECHNOLOGY ASSESSMENT  
 BY FIELD SUMMARY OF GROUND OBSERVATIONS

#4-50

28

 County LIVINGSTON Township 28 N Range 5 E Section 12 Field 41 + 42

Date 1	Acres est. 2	Crop 3	Height 4	Stage of Maturity 5	Row		Ground Cover 8	Observations 9	Observer 10	JSC Comments 11
					Dir. 6	Width 7				
#41 6-13	5.2	Soybeans	2"	1	2	38"	0	41	SELLMYER	
6-29	"	"	6"	"	"	"	1	42	"	
7-17	"	"	21"	2	2	38"	3	41	"	
8-6	"	"	30"	3	2	38"	4	42	"	
8-29	"	"	30"	4	2	38"	4	41	"	
9-9	"	"	30"	5	2	38"	4	42	"	
9-24	"	"	30"	6	2	38"	4	42	"	
#42 6-13	6.5	Soybeans	2"	1	2	38"	0	41	SELLMYER	
6-29	"	"	6"	"	"	"	1	42	"	
7-17	"	"	21"	2	2	38"	3	41	"	
8-6	"	"	30"	3	2	38"	4	42	"	
8-29	"	"	30"	4	2	38"	4	41	"	
9-9	"	"	30"	5	2	38"	4	42	"	
9-24	"	"	30"	6	2	38"	4	42, 22	"	

6-15 3

ASCS SUPPORT FOR CROP ID TECHNOLOGY ASSESSMENT  
BY FIELD SUMMARY OF GROUND OBSERVATIONS

# 4-50

County LIVINGSTON Township 28 N Range 5 E Section 12 Field 43 + 44

Date 1	Acres est. 2	Crop 3	Height 4	Stage of Maturity 5	Row		Ground Cover 8	Observations 9	Observer 10	JSC Comments 11
					Dir. 6	Width 7				
#43 6-13	50	CORN	4"	1	2	38	1	41	SELLMYER	
6-29	"	"	20"	"	"	"	3	42	"	
7-17	"	"	66"	1	2	38"	4	41	"	
8-6	"	"	84"	2	2	38"	4	42	"	
8-29	"	"	86	2	2					
9-9	"	"	86	2	2	38	4	42	"	
9-27	"	"	86	3	2	38	4	42	"	
#44 6-13	22	Soybeans	2"	1	2	38"	0	41	SELLMYER	
6-29	"	"	6"	"	"	"	1	42	"	
7-17	"	"	18"	2	2	38"	3	41	"	
8-6	"	"	28"	3	2	38"	4	42	"	
8-29	"	"	32"	4	2	38"	4	41	"	
9-9	"	"	32	4	2	38	4	42	"	
9-27	"	"						42, 24	"	

CROP ID TECHNOLOGY ASSESSMENT  
 IDENTIFICATION SUMMARY

CITARS # 4-52

County LIVINGSTON Township 28N Range 5E Section 24

Field No.	Crop	Crop ID Data			R o w		Area (acres)			Comments
		Conf	Date	Source	Dir.	Width	Est.	Meas.	Analyst	
01	CORN						8.4			10" 6-12
02	CORN						8.7			10" 6-12
03	CORN						5.6			10" 6-12
04	SOYBEANS						6.0			3" 6-12

6-15-73

## ASCS SUPPORT FOR CROP ID TECHNOLOGY ASSESSMENT

BY FIELD SUMMARY OF GROUND OBSERVATIONS

#452

County LIVINGSTON Township 28N Range 5E Section 24 Field 01402

Date 1	Acres est. 2	Crop 3	Height 4	Stage of Maturity 5	Row		Ground Cover 8	Observations 9	Observer 10	JSC Comments 11
					Dir. 6	Width 7				
#01 6-12	8.4	CORN	10"	1	2	30"	1	41	SELLMEYER	
6-29	"	"	30"	"	"	"	4	42	"	
7-17	"	"	78"	1	2	30"	4	41	"	
8-6	"	"	90"	2	2	30"	4	42	"	
8-29	"	"	94'	2	2	30'	4	41	"	
9-9	"	"	94	2	2	30	4	42	"	
9-24	"	"	94	3	2	30	4	42	"	
#02 6-12	8.7	CORN	10"	1	2	30"	1	41	SELLMEYER	
6-29	"	"	30"	1	"	"	4	42	"	
7-17	"	"	78"	1	2	30"	4	41	"	
8-6	"	"	90"	2	2	30"	4	42	"	
8-29	"	"	94'	2	2	30'	4	41	"	
9-9	"	"	94	2	2	30	4	42	"	
9-24	"	"	94	3	2	30	4	42	"	

## ASCS SUPPORT FOR CROP ID TECHNOLOGY ASSESSMENT

BY FIELD SUMMARY OF GROUND OBSERVATIONS #4-52

County LIVINGSTON Township 28 N Range 5 E Section 24 Field 03 + 04

Date 1	Acres est. 2	Crop 3	Height 4	Stage of Maturity 5	Row		Ground Cover 8	Observations 9	Observer 10	JSC Comments 11
					Dir. 6	Width 7				
#03 6-12	55.9	CORN	10"	1	2	30"	1	41	Sellmyer	
6-29	"	"	30"	"	"	"	4	42	"	
7-17	"	"	78"	1	2	30"	4	41	"	
8-6	"	"	86"	2	2	30"	4	42	"	
8-29	"	"	88"	2	2	30"	4	41	"	
9-9	"	"	88"	2	2	30	4	42	"	
9-24	"	"	88'	3	2	30	4	42	"	
#04 6-12	59.4	SOYBEANS	3"	1	2	30"	0	41 2	Sellmyer	
6-29	"	"	6"	1	2	"	1	42	"	
7-17	"	"	18"	2	2	30"	3	41	"	
8-6	"	"	32"	3	2	30"	4	42	"	
8-29	"	"	34'	4	2	30	4	41	"	
9-9	"	"	34"	5	2	30	4	42	"	
9-24	"	"	34	6	2	30	4	42, 22, 2, 51	"	

CROP ID TECHNOLOGY ASSESSMENT IDENTIFICATION SUMMARY

CITARS # 4-14

County LIVINGSTON Township 28N Range 5E Section 34

Field No.	Crop	Crop ID Data			Row		Area (acres)			Comments
		Conf.	Date	Source	Dir.	Width	Est.	Meas.	Analyst	
01	AIRPORT	/grass					20			
02	SOYBEANS						18			1" <del>2-12</del>
03	*						126			
<p>* Field 03 listed as weedy bare soil on 6/12 but Combined with 02 on 6/29 and subsequent entries with all Soybeans listed as 1" on 6-29</p>										



## ASCS SUPPORT FOR CROP ID TECHNOLOGY ASSESSMENT

## BY FIELD SUMMARY OF GROUND OBSERVATIONS

County LIVINGSTON Township 28N Range 5E Section 34 #4-14 Field 01-02

Date 1	Acres est. 2	Crop 3	Height 4	Stage of Maturity 5	Row		Ground Cover 8	Observations 9	Observer 10	JSC Comments 11
					Dir. 6	Width 7				
#01 6-12	19.8	AIRPORT							SELLMYER	
6-29	"	"							"	
7-17	"	"						41	"	
8-3	"							41	"	
8-28	"	"						41	"	
9-8	"	"						41	"	
9-26	"	"						42	"	
#02 6-12	18	Soybeans	1"	1	1	30"	0	41	SELLMYER	
6-29	144	"	"	"	2	"	"	42, 12	"	
7-17	"	"	8"	1	2	30"	2	41	"	
8-3	"	"	21"	2	2	30"	3	41	"	
8-28	"	"	31	3	2	30	4	41	"	
9-8	"	"	32	4	2	30	4	41	"	
9-26	"	"	32	6	2	30	3	42	"	

6-15-73

ASCS SUPPORT FOR CROP ID TECHNOLOGY ASSESSMENT  
BY FIELD SUMMARY OF GROUND OBSERVATIONS

#4-14

County LIVINGSTON

Township 28 N

Range 5 E

Section 34

Field 03

Date 1	Acres est. 2	Crop 3	Height 4	Stage of Maturity 5	R o w		Ground Cover 8	Observations 9	Observer 10	JSC Comments 11
					Dir. 6	Width 7				
#03 6-12	126	NONE					3	41 1 32	SELLMEYER	
6-29									" "	

36 6-15-73

CROP ID TECHNOLOGY ASSESSMENT  
IDENTIFICATION SUMMARY

CITARS # 4-89

County LIVINGSTON Township 28N Range 6E Section 5

Field No.	Crop	Crop ID Data			Row		Area (acres)			Comments
		Conf.	Date	Source	Dir.	Width	Est.	Meas.	Analyst	
01	SOYBEANS						38			2" 7-17
02	CORN						33			4" 6-13
03	SOYBEANS						33			4" 6-29
04	CORN						10			3" 6-13
05	Oats						40			plowed after 9/9
06	Clover, grass						2			
* 06 recognized as separate field first on 7/17										
it is a strip across north end of # 01										

6-1-73

 ASCS SUPPORT FOR CROP ID TECHNOLOGY ASSESSMENT  
 BY FIELD SUMMARY OF GROUND OBSERVATIONS

# 4-89

 County LIVINGSTON Township 28N Range 6E Section 5 Field DY 402

Date 1	Acres est. 2	Crop 3	Height 4	Stage of Maturity 5	Row		Ground Cover 8	Observations 9	Observer 10	JSC Comments 11
					Dir. 6	Width 7				
#01 6-13	39.5							41, 1, 32	SELLMYER	
6-29								42, 1	"	
7-17	37.6	Soybeans	2"	1	1+2	38"	0	41	"	
8-6	"	"	8"	1	1+2	38"	1	42	"	
8-29	"	"	21	3	1+2	38	2	41	"	
9-9	"	"	21	4	1+2	38	3	42	"	
9-27	"	"	24	5	1+2	38	3	42	"	
#02 6-13	33	CORN	4"	1	1	38"	1	41	SELLMYER	
6-29	"	"	18"	"	"	"	2	42	"	
7-17	"	"	42"	1	1	"	4	41, 34	"	
8-6	"	"	84"	2	1	38"	4	42	"	
8-29	"	"	84"	2	1	38"	4	41	"	
9-9	"	"	84"	2	1	38"	4	42	"	
9-27	"	"	84	3	1	38	4	42	"	

6-10-73

 ASCS SUPPORT FOR CROP ID TECHNOLOGY ASSESSMENT  
 BY FIELD SUMMARY OF GROUND OBSERVATIONS

#4-89

38

 County LIVINGSTON Township 28N Range 6E Section 5 Field 03+04

Date	Acres est.	Crop	Height	Stage of Maturity	Row		Ground Cover	Observations	Observer	JSC Comments
					Dir.	Width				
1	2	3	4	5	6	7	8	9	10	11
#03 6-13	33	Soybeans			1	38"	0	41, 3	SELLMYER	
6-29	"	"	4"	1	"	"	"	42, 11	"	
7-17	"	"	3"	1	1	38"	0	41, 5	"	
8-6	"	"	10"	2	1	38"	2	42, 5	"	
8-29	"	"	24	3	1	38	3	41	"	
9-9	"	"	24	4	1	38	3	42	"	
9-24	"	"	24	5	1	38	3	42	"	
#04 6-13	10	CORN	3"	1	1	38"	1	41	SELLMYER	
6-29	"	"	12"	"	"	"	2	42	"	
7-17	"	"	24"	1	1	38"	4	41, 34	"	
8-6	"	"	80"	2	1	38"	4	42	"	
8-29	"	"	80"	2	1	38"	4	42	"	
9-9	"	"	80"	2	1	38"	4	42	"	
9-24	"	"	80"	3	1	38	4	42	"	

6-1-73

## ASCS SUPPORT FOR CROP ID TECHNOLOGY ASSESSMENT

## BY FIELD SUMMARY OF GROUND OBSERVATIONS

#4-89

County LIVINGSTON Township 28 N Range 6 E Section 5 Field 05-16

Date 1	Acres est. 2	Crop 3	Height 4	Stage of Maturity 5	Row		Ground Cover 8	Observations 9	Observer 10	JSC Comments 11
					Dir. 6	Width 7				
#05 6-13	40	OATS	12"		0		4	41	SELLMYER	
6-29	"	"	"	2	"		"	42	"	
7-17	"	"			0	0	4	41	"	
8-6	"	"			0	0	4	42	"	
8-29	"	"			0	0	4	41	"	
9-9	"	"	12'	Mature	0	0	4	42, 51	"	<del>cut</del>
9-27	"	"					0	42, 2, 51	"	plowed
#06 7-17	1.9	CLOVER, GRASS	30'		0	0	4	41	SELLMYER	
8-6	"	"	30'		0	0	4	42	"	
8-29	"	"	30'		0	0	4	41	"	
9-9	"	"	30'		0	0	4	42	"	
9-27	"	"	30'		0		4	42	"	

39

CROP ID TECHNOLOGY ASSESSMENT CITARS # 4-91  
IDENTIFICATION SUMMARY

County LIVINGSTON Township 28N Range 6E Section 17

Field No.	Crop	Crop ID Data			R o w		Area (acres)			Comments
		Conf.	Date	Source	Dir.	Width	Est.	Meas.	Analyst	
41	CORN						40			6" 6-12
42	SOYBEANS						40			2" 6-12
43	SOYBEANS						46			2" 6-12
44	SOYBEANS						19			2" 6-12
45	CORN						11			4" 6-12

6-15-73

 ASCS SUPPORT FOR CROP ID TECHNOLOGY ASSESSMENT  
 BY FIELD SUMMARY OF GROUND OBSERVATIONS

#4-91

 County LIVINGSTON Township 28 N Range 6 E Section 17 Field 41 & 42

Date 1	Acres est. 2	Crop 3	Height 4	Stage of Maturity 5	Row		Ground Cover 8	Observations 9	Observer 10	JSC Comments 11
					Dir. 6	Width 7				
#41 6-12	40	CORN	6"	1	1	30"	1	41	SELLMYER	
6-29	"	"	24"	"	"	"	4	42	"	
7-17	"	"	72"	1	1	30"	4	41	"	
8-6	"	"	88"	2	1	30"	4	42	"	
8-29	"	"	88"	2	1	30"	4	41	"	
9-9	"	"	88"	2	1	30"	4	42	"	
9-27	"	"	88"	3	1	30"	4	41	"	
#42 6-12	40	Soybeans	2"	1	1	30"	0	41, 2	SELLMYER	
6-29	"	"	6"	"	"	"	1	42	"	
7-17	"	"	22"	2	1	30"	3	41	"	
8-6	"	"	34"	3	1	30"	4	42	"	
8-29	"	"	34"	4	1	30"	4	41	"	
9-9	"	"	34"	5	1	30"	4	42	"	
9-27	"	"						41 21	"	



6-1-73

ASCS SUPPORT FOR CROP ID TECHNOLOGY ASSESSMENT  
BY FIELD SUMMARY OF GROUND OBSERVATIONS

#4-91

County LIVINGSTON Township 28 N Range 6 E Section 17 Field 43 + 44

Date 1	Acres est. 2	Crop 3	Height 4	Stage of Maturity 5	R o w		Ground Cover 8	Observations 9	Observer 10	JSC Comments 11
					Dir. 6	Width 7				
#43 6-12	46	Soybeans	2"	1	1	38"	0	41	SELLMYER	
6-29	"	"	6"	"	"	"	1	42	"	
7-17	"	"	16"	2	1	38"	3	41	"	
8-6	"	"	32"	3	1	38"	4	42	"	
8-29	"	"	32"	4	1	38"	4	41	"	
9-9	"	"	32"	5	1	38"	4	42	"	
9-21	"	"	32"	6	1	38"	4	41, 22, 2, 51	"	
#44 6-12	18.7	Soybeans	2"	1	1	38"	0	41	SELLMYER	
6-29	"	"	6"	1	"	"	1	42	"	
7-17	"	"	16"	2	1	38"	3	41	"	
8-6	"	"	32"	3	1	38"	4	42	"	
8-29	"	"	32"	4	1	38"	4	41	"	
9-9	"	"	32"	5	1	38"	4	42	"	
9-24	"	"						41 21 2		

6-1-73

ASCS SUPPORT FOR CROP ID TECHNOLOGY ASSESSMENT  
 BY FIELD SUMMARY OF GROUND OBSERVATIONS

#4-91

County LIVINGSTON Township 28N Range 6E Section 17 Field 45

#45

Date 1	Acres est. 2	Crop 3	Height 4	Stage of Maturity 5	R o w		Ground Cover 8	Observations 9	Observer 10	JSC Comments 11
					Dir. 6	Width 7				
6-12	11	CORN	4"	1	1	38"	0	41	SELLMYER	
6-29	"	"	12"	"	"	"	2	42	"	
7-17	"	"	54'	1	1	38"	4	41	"	
8-6	"	"	72	2	1	38"	4	42	"	
8-29	"	"	76	2	1	38	4	41	"	
9-9	"	"	76	2	1	38	4	42	"	
9-24	"	"	76	3	1	38	4	41	"	

43

44 6-15-73

CROP ID TECHNOLOGY ASSESSMENT  
IDENTIFICATION SUMMARY

CITARS # 4-72

County LIVINGSTON Township 28N Range 6E Section 19

Field No.	Crop	Crop ID Data			Row		Area (acres)			Comments
		Conf	Date	Source	Dir.	Width	Est.	Meas.	Analyst	
41	CORN						29			8" 6-12
42	WHEAT						5			Harvested after 6-29 No following crop identified
43	Pasture						5			
44	Pasture						4			
45	WHEAT						34			Harvested after 6-29 no following crop identified
46	SOYBEANS						40			2" 6-12
47	CORN									
48	SOYBEANS									
<p style="font-size: 48px; font-weight: bold; opacity: 0.5;">PROBLEMS</p>										

6-15-73

 ASCS SUPPORT FOR CROP ID TECHNOLOGY ASSESSMENT  
 BY FIELD SUMMARY OF GROUND OBSERVATIONS

#4-72

 County LIVINGSTON Township 28 N Range 6 E Section 19 Field 41 + 42

Date 1	Acres est. 2	Crop 3	Height 4	Stage of Maturity 5	Row		Ground Cover 8	Observations 9	Observer 10	JSC Comments 11
					Dir. 6	Width 7				
#41 6-12	29	CORN	8"	1	1	38"	1	41	SELLMYER	
6-29	"	"	24"	"	"	38"	3	42	"	
7-17	"	"	78"	2	1	38"	4	41	"	
8-6	"	"	86"	2	1	38"	4	42	"	
8-29	"	"	88"	2	1	38"	4	41	"	
9-9	"	"	88"	2	1	38"	4	42	"	
9-27	"	"	88"	3	1	38"	4	41	"	
#42 6-12	5	WHEAT	24"	2	0		4	41	SELLMYER	
6-29	"	"	36"	"	"		"	42	"	
7-17	"	"			0	0	4	41, 21	"	
8-6	"	"			0	0	4	42, 21	"	
8-29	"	"			0	0	4	41, 21	"	
9-9	"	"			0	0	4	42, 21	"	
9-27	"	"			0			41, 21	"	

45

6-15-73

 ASCS SUPPORT FOR CROP ID TECHNOLOGY ASSESSMENT  
 BY FIELD SUMMARY OF GROUND OBSERVATIONS

#4-72

 County LIVINGSTON Township 28N Range 6E Section 19 Field 43+44

46

Date 1	Acres est. 2	Crop 3	Height 4	Stage of Maturity 5	Row		Ground Cover 8	Observations 9	Observer 10	JSC Comments 11
					Dir. 6	Width 7				
#43 6-12	5	PASTURE	18"		0		4	41, 23	SELLMYER	
6-29	"	"	"		"		"	41, 23	"	
7-17	"	"	4"		0	0	4	41, 51	"	
8-6	"	"	4"		0	0	4	42, 51	"	
8-29	"	"	4"		0	0	4	41, 51	"	
9-9	"	"	4"		0	0	4	42	"	
9-27	"	"	4"		0		4	41	"	
#44 6-12	4	PASTURE	5"		0		4	41, 51	SELLMYER	
6-29	"	"	6"		"		4	42	"	
7-17	"	"	4"		0	0	4	41, 51	"	
8-6	"	"	4"		0	0	4	42, 51	"	
8-29	"	"	4"		0	0	4	41, 51	"	
9-9	"	"	4"		0	0	4	42	"	
9-27	"	"	4"		0		4	41	"	

6-15-73

 ASCS SUPPORT FOR CROP ID TECHNOLOGY ASSESSMENT  
 BY FIELD SUMMARY OF GROUND OBSERVATIONS

#4-72

 County LIVINGSTON Township 28 N. Range 6 E Section 19 Field 45 & 46

Date 1	Acres est. 2	Crop 3	Height 4	Stage of Maturity 5	R o w		Ground Cover 8	Observations 9	Observer 10	JSC Comments 11
					Dir. 6	Width 7				
#45 6-12	34	WHEAT	24"	2	0		4	41	SELLMYER	
6-29	"	"	36"	"	"		"	42	"	
7-17	"	"			0	0	4	41, 21	"	
8-6	"	"			0	0	4	42, 21	"	
8-29	"	"			0	0	4	41, 21	"	
9-9	"	"			0	0	4	42, 21	"	
9-24	"	"			0		4	41, 21	"	
#46 6-12	39.5	Soybeans	2"	1	1	38"	0	41, 2	SELLMYER	
6-29	28	"	6"	"	"	"	1	42, 2	"	
7-17	39.5	"	18"	2	1	38"	3	41	"	
8-6	34.5	"	30"	3	1	38"	4	42	"	
8-29	"	"	34"	4	1	38"	4	41	"	
9-9	"	"	34	5	1	38"	4	42	"	
9-24	"	"						41, 21, 2	"	

6-15-73

 ASCS SUPPORT FOR CROP ID TECHNOLOGY ASSESSMENT  
 BY FIELD SUMMARY OF GROUND OBSERVATIONS

#4-72

48

 County LIVINGSTON Township 28N Range 6E Section 19 Field 47 + 48

Date	Acres est.	Crop	Height	Stage of Maturity	Row		Ground Cover	Observations	Observer	JSC Comments
					Dir.	Width				
1	2	3	4	5	6	7	8	9	10	11
#47 6-12	39.5	CORN	6"	1	1	38"	1	41, 2	SELLMYER	
6-29	35	"	24"	"	"	"	3	42, 2	"	
7-17	39.5	"	72"	1	1	38"	4	41	"	
8-6	29.5	"	84"	2	1	38"	4	42	"	
8-29	"	"	84"	2	1	38"	4	41	"	
9-9	"	"	84"	2	1	38"	4	42	"	
9-27	"	"	84"	3	1	38"	4	41	"	
#48 6-29	5	SOYBEANS	6"	1	1	38"	1	42, 2	SELLMYER	
7-17	15	"	18"	2	1	38"	3	41	"	
8-6	"	"	30"	3	1	38"	4	42	"	
8-29	"	"	34"	4	1	38"	4	41	"	
9-9	"	"	34"	5	1	38"	4	42	"	
9-27	"	"						41, 21, 2	"	

6-15-73

49

### CROP ID TECHNOLOGY ASSESSMENT

### IDENTIFICATION SUMMARY *CITRUS 4-43*

County LIVINGSTON Township 29N Range 5E Section 1

Field No.	Crop	Crop ID Data			R o w		Area (acres)			Comments
		Conf	Date	Source	Dir.	Width	Est.	Meas.	Analyst	
41	SOYBEAN						24			2" 6-13
42	CORN						47			4" 6-13
43	Pasture						8			
44	SOYBEAN						12			2" 7-2
45	CORN						32			4" 6-13
46	SOYBEANS						40			4" 7-2



ASCS SUPPORT FOR CROP ID TECHNOLOGY ASSESSMENT  
 BY FIELD SUMMARY OF GROUND OBSERVATIONS

#4-43

 County LIVINGSTON Township 29 N Range 5 E Section 1 Field 41 + 42

Date 1	Acres est. 2	Crop 3	Height 4	Stage of Maturity 5	Row		Ground Cover 8	Observations 9	Observer 10	JSC Comments 11
					Dir. 6	Width 7				
#41 6-13	2.4	SOYBEAN	2	1	1	38"	0	41	SELLMYER	
7-2	"	"	6"	"	"	"	1	42, 2	"	
7-17	"	"	16"	2	1	38"	2	41	"	
8-3	"	"	24"	3	1	38"	4	42	"	
8-29	"	"	30"	4	1	38"	4	41	"	
9-10	"	"	30"	5	1	38"	4	42	"	
9-27	"	"	30"	6	1	38"	3	42	"	
#42 6-13	4.7	CORN	4"	1	1	38"	1	41	SELLMYER	
7-2	"	"	24"	"	"	"	3	42, 12	"	
7-17	4.7	"	48"	1	1	38"	4	41	"	
8-3	"	"	88"	2	1	38"	4	42	"	
8-29	"	"	88"	2	1	38"	4	41	"	
9-10	"	"	88"	2	1	38"	4	42	"	
11-27	"	"	88"	3	1	38"	4	42	"	

6-15-73

## ASCS SUPPORT FOR CROP ID TECHNOLOGY ASSESSMENT

## BY FIELD SUMMARY OF GROUND OBSERVATIONS

County LIVINGSTON Township 29N Range 5E Section 1 # 4-43 Field 43+44

Date 1	Acres est. 2	Crop 3	Height 4	Stage of Maturity 5	Row		Ground Cover 8	Observations 9	Observer 10	JSC Comments 11
					Dir. 6	Width 7				
#43 6-13	8	Pasture	18"				4	41	SELLMYER	
7-2	"	"	24"	2			"	42	"	
7-17	"	"	24"				4	41	"	
8-3	"	"	24"		0		4	42	"	
8-29	"	"	24"		0		4	41	"	
9-10	"	"	24"		0		4	42	"	
9-24	"	"	24"		0		4	42	"	
#44 6-13	12	Soybean		1	1	38"	0	41 3	SELLMYER	
7-2	"	"	2"	"	"	"	"	42, 12, 44	"	
7-17	"	"	11"	1	1	38"	2	41, 12	"	
8-3	"	"	18"	2	1	38"	3	42, 12	"	
8-29	"	"	20"	3	1	38"	4	41	"	
9-10	"	"	28"	4	1	38"	4	42	"	
9-24	"	"	28"	6	1	38"	2	42	"	

ASCS SUPPORT FOR CROP ID TECHNOLOGY ASSESSMENT  
 BY FIELD SUMMARY OF GROUND OBSERVATIONS

 County LIVINGSTON Township 29E Range 5E Section 1 # 4-43 Field 45+46

Date 1	Acres est. 2	Crop 3	Height 4	Stage of Maturity 5	Row		Ground Cover 8	Observations 9	Observer 10	JSC Comments 11
					Dir. 6	Width 7				
#45 6-13	32	CORN	4"	1	1	38"	1	41	SELLMYER	
7-2	"	"	20"	"	"	"	3	42	"	
7-17	"	"	49"	1	1	38"	4	41	"	
8-3	"	"	84"	2	1	38"	4	42	"	
8-29	"	"	84"	2	1	38"	4	41	"	
9-10	"	"	84"	2	1	38"	4	42	"	
9-24	"	"	84"	3	1	38"	4	42	"	
#46 6-13	40	SOYBEANS			1	38"	0	41	SELLMYER	
7-2	"	"	4"	1	"	"	1	42	"	
7-17	"	"	15"	2	1	38"	3	41	"	
8-3	"	"	24"	3	1	38"	4	42	"	
8-29	"	"	34"	4	1	38"	4	41	"	
9-10	"	"	34"	5	1	38"	4	42	"	
9-24	"	"	34"	6	1	38"	4	42	"	

6-15-73

### CROP ID TECHNOLOGY ASSESSMENT IDENTIFICATION SUMMARY

53

OITARS 4-26

County LIVINGSTON Township 29 N Range 5 E Section 23

Field No.	Crop	Crop ID Data			R o w		Area (acres)			Comments
		Conf.	Date	Source	Dir.	Width	Est.	Meas.	Analyst	
21	CORN						99			3" 6-13
22	Weeds						35			Bare through 7-2 plowed after 9-9
23	SOYBEANS						50			2" 7-2

ASCS SUPPORT FOR CROP ID TECHNOLOGY ASSESSMENT  
 BY FIELD SUMMARY OF GROUND OBSERVATIONS

#4-26

 County LIVINGSTON Township 29N Range 5E Section 23 Field 21+22

Date 1	Acres est. 2	Crop 3	Height 4	Stage of Maturity 5	Row		Ground Cover 8	Observations 9	Observer 10	JSC Comments 11
					Dir. 6	Width 7				
#21 6-13	99	Corn	3"	1	2	38"	4	41 32	SELLMYER	
7-2	"	"	12"	"	"	"	2	42, 2, 12, 32, 44	"	
7-17	"	"	36"	1	2	"	4	41, 12	"	
8-3	"	"	76"	2	2	38"	4	42, 12	"	
8-29	"	"	80"	2	2	38"	4	41, 12	"	
8-9	"	"	80"	2	2	38"	4	42, 12	"	
9-21	"	"	80"	3	2	38"	4	42, 12	"	
#22 6-13	3.5	Bare					0	41 1	SELLMYER	
7-2	"						"	42, 2	"	
7-17	"							41, 32	"	
8-3	"	Not planted - WEEDS	12"				4	42, 51	"	
8-29	"	"	36"				4	41, 51	"	
9-9	"	"	36"				4	42, 51	"	
9-21	"	plowed up						42, 51	"	

6-15-73

 ASCS SUPPORT FOR CROP ID TECHNOLOGY ASSESSMENT  
 BY FIELD SUMMARY OF GROUND OBSERVATIONS

#4-26

 County LIVINGSTON Township 29N Range 5E Section 23 Field 23

Date 1	Acres est. 2	Crop 3	Height 4	Stage of Maturity 5	Row		Ground Cover 8	Observations 9	Observer 10	JSC Comments 11
					Dir. 6	Width 7				
#23 6-13	49.7						0	41, 1, 2	SELLMYER	
7-2	"	Soybeans	2"	1	1	38"	"	42, 11	"	
7-17	"	"	4"	1	1	38"		41, 11, 5	"	
8-3	"	"	14"	2	1	38"		42, 11, 5, 32	"	
8-29	"	"	20"	3	1	38"	3	41, 11, 5, 32	"	
9-9	"	"	20"	4	1	38"	4	42, 11, 5, 32	"	
9-27	"	"	20"	5 + 6	1	38"	3	42, 11, 32		

56 6-15-73

CROP ID TECHNOLOGY ASSESSMENT  
IDENTIFICATION SUMMARY CITRUS 4-65

County LIVINGSTON Township 29N Range 6E Section 18

Field No.	Crop	Crop ID Data			R o w		Area (acres)			Comments
		Conf	Date	Source	Dir.	Width	Est.	Meas.	Analyst	
21	CORN						11			4" 6-13
22	Pasture						7			
23	CORN						21			4" 6-13
24	SOYBEANS						36			2" 7-17
25	Pasture						6			
26	CORN						17			4" 6-13
27	Pasture						21			

6-15-73

## ASCS SUPPORT FOR CROP ID TECHNOLOGY ASSESSMENT

## BY FIELD SUMMARY OF GROUND OBSERVATIONS

County LIVINGSTON Township 29N Range 6E Section 18 #4-65 Field 21+22

Date 1	Acres est. 2	Crop 3	Height 4	Stage of Maturity 5	Row		Ground Cover 8	Observations 9	Observer 10	JSC Comments 11
					Dir. 6	Width 7				
#21 6-13	11	CORN	4"	1	1	38"	1	41	SELLMYER	
7-2	"	"	15"	"	"	"	2	42, 2	"	
7-17	"	"	48"	1	1	38"	4	41	"	
8-3	"	"	82"	2	1	38"	4	42	"	
8-29	"	"	82"	2	1	38"	4	41	"	
9-10	"	"	82"	2	1	38"	4	42	"	
9-27	"	"	82"	3	1	38"	4	42	"	
#22 6-13	7	PASTURE					4	41	SELLMYER	
7-2	7	"	15"				"	42	"	
7-17	"	"	2"		0		"	41, 51	"	mowed
8-3	"	"	6"		0		4	42	"	
8-29	"	"	8"		0		4	41	"	
9-10	7	"	8"		0		4	42	"	
9-27	7	"	8"		0		4	42	"	



6-15-73

58

ASCS SUPPORT FOR CROP ID TECHNOLOGY ASSESSMENT  
BY FIELD SUMMARY OF GROUND OBSERVATIONS

County LIVINGSTON Township 29N Range 6E Section 18 # 4-65 Field 23 & 24

Date	Acres est.	Crop	Height	Stage of Maturity	Row		Ground Cover	Observations	Observer	JSC Comments
					Dir.	Width				
1	2	3	4	5	6	7	8	9	10	11
#23 6-13	21	Corn	4"	1	2	38"	1	41	SELLMYER	
7-2	"	"	24"	"	"	"	3	42	"	
7-17	"	"	75'	1	2	38"	4	41	"	
8-3	"	"	84"	2	2	38"	4	42	"	
8-29	"	"	84"	2	2	38"	4	41	"	
9-10	"	"	84	2	2	38	4	42	"	
9-27	"	"	84	3	2	38	4	42	"	
#24 6-13	36						0	41 1	SELLMYER	
7-2	"						"	42, 1, 3	"	
7-17	"	Soybeans	2"	1	2	38"	0	41, 2	"	
8-3	"	"	12"	1	2	38"	2	42, 2	"	
8-29	"	"	20"	3	2	38"	3	41	"	
9-10	"	"	30"	4	2	38	4	42	"	
9-27	"	"	30	5	2	38	4	42	"	

6-15-73

 ASCS SUPPORT FOR CROP ID TECHNOLOGY ASSESSMENT  
 BY FIELD SUMMARY OF GROUND OBSERVATIONS

#4-65

 County LIVINGSTON Township 29 N Range 6 E Section 18 Field 25+26

Date 1	Acres est. 2	Crop 3	Height 4	Stage of Maturity 5	Row		Ground Cover 8	Observations 9	Observer 10	JSC Comments 11
					Dir. 6	Width 7				
#25 6-13	6.1	Pasture					4	41	SELLMYER	
7-2	"	"	15"				"	42	"	
7-17	6.1	"	2"		0		4	41, 51	"	
8-3	"	"	6"		0		4	42	"	
8-29	"	"	8"		0		4	41	"	
9-10	"	"	8"		0		4	42	"	
9-27	"	"	8"		0		4	42	"	
#26 6-13	17	Corn	4"	1	2	38"	1	41	SELLMYER	
7-2	"	"	24"	1	"	"	3	42	"	
7-17	"	"	72"	1	2	38"	4	41	"	
8-3	"	"	84"	2	2	38"	4	42	"	
8-29	"	"	84"	2	2	38"	4	41	"	
9-10	"	"	84"	2	2	38"	4	42	"	
9-27	"	"	84"	3	2	38"	4	42	"	

59

6-15-73

## ASCS SUPPORT FOR CROP ID TECHNOLOGY ASSESSMENT

## BY FIELD SUMMARY OF GROUND OBSERVATIONS

#4-65

County LIVINGSTON Township 29 N Range 6 E Section 18 Field 27

60

Date 1	Acres est. 2	Crop 3	Height 4	Stage of Maturity 5	R o w		Ground Cover 8	Observations 9	Observer 10	JSC Comments 11
					Dir. 6	Width 7				
#27 6-13	21	PASTURE					4	41	SELLMYER	
7-2	"	"	15"				"	42	"	
7-17	"	"	15"				4	41	"	
8-3	"	"	2"			0	4	42, 51	"	mowed.
8-29	"	"	4'			0	4	41	"	
9-10	"	"	8"			0	4	42	"	
9-24	"	"	4"			0	4	42	"	

6-15-73

CROP ID TECHNOLOGY ASSESSMENT  
IDENTIFICATION SUMMARY

61  
CITARS 4-67

County LIVINGSTON Township 29N Range 6E Section 30

Field No.	Crop	Crop ID Data			R o w		Area (acres)			Comments
		Conf	Date	Source	Dir.	Width	Est.	Meas.	Analyst	
01	SOYBEANS						2			2" 7-2
02	Pasture/Clver						11			
03	CORN						66			3" 6-13
04	CORN						28			2" 7-2
05	Hay/Clver						13.5			
06	CORN						14			3" 6-13

6-15-73

## ASCS SUPPORT FOR CROP ID TECHNOLOGY ASSESSMENT

BY FIELD SUMMARY OF GROUND OBSERVATIONS

#4-67

62

County LIVINGSTON Township 29 N Range 6 E Section 30 Field 01 + 02

Date 1	Acres est. 2	Crop 3	Height 4	Stage of Maturity 5	Row		Ground Cover 8	Observations 9	Observer 10	JSC Comments 11
					Dir. 6	Width 7				
#01 6-13	2							0	41, 2	SELLMYER
7-2	"	SOYBEANS	2"	1	1	38"	"	"	42, 32	"
7-17	"	"	8"	1	1	38"	1	1	41	"
8-3	"	"	26"	2	1	38"	3	1	42	"
8-29	"	"	36"	3	1	38"	4	1	41	"
9-9	"	"	36"	4	1	38"	4	1	42	"
9-24	"	"	36"	6	1	38"	4	1	42	"
#02 6-13	11	PASTURE							41	SELLMYER
7-2	"	CLOVER	18"	1	0		4	1	42	"
7-17	"	"	18"		0		4	1	41	"
8-3	"	"	24"		0		4	1	42	"
8-29	"	"	24"		0		4	1	41	"
9-9	"	"	24"		0		4	1	42	"
9-24	"	"	24"		0		4	1	42	"

6-1-73

 ASCS SUPPORT FOR CROP ID TECHNOLOGY ASSESSMENT  
 BY FIELD SUMMARY OF GROUND OBSERVATIONS

#4-67

 County LIVINGSTON Township 29 N Range 6 E Section 30 Field 03+04

Date 1	Acres est. 2	Crop 3	Height 4	Stage of Maturity 5	Row		Ground Cover 8	Observations 9	Observer 10	JSC Comments 11
					Dir. 6	Width 7				
#03 6-13	66	Corn	3	1	2	38	0	41	SELLMYER	
7-2	"	"	6"	"	"	"	1	42, 32	"	
7-17	"	"	18"	1	2	38"	2	41	"	
8-3	"	"	60"	2	2	38"	4	42	"	
8-29	"	"	72"	2	2	38"	4	41	"	
9-9	"	"	72"	2	2	38"	4	42	"	
9-24	"	"	72"	3	2	38	4	42	"	
#04 6-13	28						0	41 1	SELLMYER	
7-2	"	CORN	2'	1	2	38"	"	42	"	
7-17	"	"	10"	1	2	38"	1	41, 34	"	
8-3	"	"	36"	1	2	38"	3	42, 34, 11	"	
8-29	"	"	72'	2	2	38"	4	41, 34, 11	"	
9-9	"	"	72"	2	2	38"	4	42 34 11	"	
9-24	"	"	72"	2	2	38"	4	42, 34, 11	"	

6-15-73

 ASCS SUPPORT FOR CROP ID TECHNOLOGY ASSESSMENT  
 BY FIELD SUMMARY OF GROUND OBSERVATIONS

 County LIVINGSTON Township 29 N Range 6 E Section 30 Field 05+06 #4-67

64

Date 1	Acres est. 2	Crop 3	Height 4	Stage of Maturity 5	R o w		Ground Cover 8	Observations 9	Observer 10	JSC Comments 11
					Dir. 6	Width 7				
#05 6-13	13.5	HAY	18"				4	41	SELLMYER	
7-2	"	CLOVER	24"				"	42	"	
7-17	"	"	24"				4	41	"	
8-3	"	"	36"				4	42	"	
8-29	"	"	36"				4	41	"	
9-9	"	"	36"				4	42	"	
9-27	"	"	36"				4	42	"	
#06 6-13	14	Corn	3"	1	1	38"	1		SELLMYER	
7-2	"	"	6"	"	"	"	"	42	"	
7-17	"	"	15"	1	1	38"	2	41, 34	"	
8-3	"	"	36"	1	1	38"	3	42, 34	"	
8-29	"	"	72"	2	1	38"	4	41, 34	"	
9-9	"	"	72"	2	1	38"	4	42, 34	"	
9-27	"	"	72"	2	1	38"	4	42, 34	"	

6-15-73

65

### CROP ID TECHNOLOGY ASSESSMENT IDENTIFICATION SUMMARY

CITARS 4-21

County Livingston Township 30N Range 5E Section 26

Field No.	Crop	Crop ID Data			Row		Area (acres)			Comments
		Conf.	Date	Source	Dir.	Width	Est.	Meas.	Analyst	
41	CORN						68			5" 6-13
42	SOYBEANS						88			4" 7-17



6-15-73

 ASCS SUPPORT FOR CROP ID TECHNOLOGY ASSESSMENT  
 BY FIELD SUMMARY OF GROUND OBSERVATIONS

 County LIVINGSTON Township 30N Range 5E Section 26 Field 41+42

 #4-2  
 (21)

Date	Acres est.	Crop	Height	Stage of Maturity	Row		Ground Cover	Observations	Observer	JSC Comments
					Dir.	Width				
1	2	3	4	5	6	7	8	9	10	11
#41 6-13	68	CORN	5"	1	1	38"	1	41	Sellmyer	
7-2	"	"	20"	"	"	"	3	42, 12, 32	"	
7-17	"	"	38"	1	1	38"	4	41, 12	"	
8-3	"	"	72"	2	1	38"	4	42, 12	"	
8-29	"	"	76"	2	1	38"	4	41, 12	"	
9-10	"	"	76"	2	1	38"	4	42, 12	"	
9-24	"	"	76"	3	1	38"	4	42, 12	"	
#42 6-13	88							41 1	Sellmyer	
7-2	"	SOYBEANS						42, 3, 1	"	
7-17	"	"	4"	1	1	38"	1	41	"	
8-3	"	"	14"	2	1	38"	2	42, 2	"	
8-29	"	"	28"	3	1	38"	4	41, 12	"	
9-10	"	"	28"	4	1	38"	4	42, 12	"	
9-24	"	"	28"	5	1	38"	3	42, 12	"	

6-15-73

67

CROP ID TECHNOLOGY ASSESSMENT  
IDENTIFICATION SUMMARY

CITRUS 4-1

County LIVINGSTON Township 30N Range 5E Section 27

Field No.	Crop	Crop ID Data			R o w		Area (acres)			Comments
		Conf	Date	Source	Dir.	Width	Est.	Meas.	Analyst	
41	Pasture						13.5			
42	SOYBEANS						64			2" 7-2
43	Pasture						33			
44	SOYBEANS						46			4" 6-13

6-15-73

68

 ASCS SUPPORT FOR CROP ID TECHNOLOGY ASSESSMENT  
 BY FIELD SUMMARY OF GROUND OBSERVATIONS

# 4-1

County LivingstonTownship 30 NRange 5 ESection 27Field 41 + 42

Date 1	Acres est. 2	Crop 3	Height 4	Stage of Maturity 5	Row		Ground Cover 8	Observations 9	Observer 10	JSC Comments 11	
					Dir. 6	Width 7					
#41 6-13	13.5	PASTURE	30"				0	4	41	SELLMYER	
7-2	"	"	"	2			"	"	42	"	
7-17	"	"	4"				0	4	41, <del>42</del>	"	mowed & baled
8-3	"	"	8"				0	4	42	"	
8-29	"	"	8"				0	4	41	"	
9-10	"	"	8"				0	4	42	"	
9-24	"	"	8"				0	4	42	"	
#42 6-13	164								41 1	SELLMYER	
7-2	"	SOYBEANS	2"	1	2	38"	0	0	42, 12	"	
7-17	"	"	4"	1	2	38"	1	1	41, 11, 2	"	
8-3	"	"	12"	2	2	38"	2	2	42, 11, 32	"	
8-29	"	"	18"	3	2	38"	3	3	41, 11	"	
9-10	"	"	18"	4	2	38"	3	3	42, 11, 32	"	
9-24	"	"	18"	N-hay 5+6	2	38"	3	3	42 11 32 5+	"	

6-15-73

## ASCS SUPPORT FOR CROP ID TECHNOLOGY ASSESSMENT

BY FIELD SUMMARY OF GROUND OBSERVATIONS #4-1

County LIVINGSTON Township 30N Range 5E Section 27 Field 43 + 44

Date 1	Acres est. 2	Crop 3	Height 4	Stage of Maturity 5	Row		Ground Cover 8	Observations 9	Observer 10	JSC Comments 11	
					Dir. 6	Width 7					
#43 6-13	33	PASTURE	18"				0	4	41	SELLMYER	
7-2	"	"	30"	2			"	"	42	"	
7-17	"	"	4"				0	4	41, <del>51</del>	"	mowed & baled
8-3	"	"	10"				0	4	42	"	
8-29	"	"	12"				0	4	41	"	
9-10	"	"	4"				0	4	42	"	
9-24	"	"	4"				0	4	42	"	
#44 6-13	46	SOYBEANS	4'	1	1	38"	0	41	41	SELLMYER	
7-2	"	"	6"	"	"	"	1	42, 2	"	"	
7-17	"	"	20"	2	1	38"	4	41	"	"	
8-3	"	"	30"	3	1	38"	4	42	"	"	
8-29	"	"	30	4	1	38	4	41	"	"	
9-10	"	"	30	5	1	38	4	42	"	"	
9-24	"	"						42, 24	"	"	

70 6-15-73

CROP ID TECHNOLOGY ASSESSMENT  
IDENTIFICATION SUMMARY

CITARS 4-81

County LIVINGSTON Township 30N Range 6E Section 29

Field No.	Crop	Crop ID Data			R o w		Area (acres)			Comments
		Conf	Date	Source	Dir.	Width	Est.	Meas.	Analyst	
01	SOYBEANS						50			3" 7-2
02	CORN						64			4" 6-13
'03	SOYBEANS						42			3" 7-2
04	Pasture						1			

6-15-73

 ASCS SUPPORT FOR CROP ID TECHNOLOGY ASSESSMENT  
 BY FIELD SUMMARY OF GROUND OBSERVATIONS

# 4-81

 County LIVINGSTON Township 30N Range 6E Section 29 Field 01 + 02

Date 1	Acres est. 2	Crop 3	Height 4	Stage of Maturity 5	R o w		Ground Cover 8	Observations 9	Observer 10	JSC Comments 11
					Dir. 6	Width 7				
#01 6-13	50	SOYBEANS			1	38"	0	3 1 41	SELLMYER	
7-2	"	"	3"	1	"	"	"	42	"	
7-17	"	"	10"	1	1	38"	2	41	"	
8-3	"	"	24"	3	1	38"	3	41	"	
8-29	"	"	30"	4	1	38"	4	41	"	
9-10	"	"	30"	4	1	38"	4	42	"	
9-24	"	"	30"	6	1	38	2	42	"	
#02 6-13	64	Corn	4"	1	1	38"	1	41	SELLMYER	
7-2	"	"	24"	"	"	"	3	42, 2	"	
7-17	"	"	54"	1	1	38"	4	41	"	
8-3	"	"	80"	2	1	38"	4	41	"	
8-29	"	"	84"	2	1	38"	4	41	"	
9-10	"	"	84"	2	1	38"	4	42	"	
9-24	"	"	84	3	1	38	4	42	"	

71

6-1-73

 ASCS SUPPORT FOR CROP ID TECHNOLOGY ASSESSMENT  
 BY FIELD SUMMARY OF GROUND OBSERVATIONS

#4-81

 County LIVINGSTON Township 30N Range 6E Section 29 Field 03+04

72

Date 1	Acres est. 2	Crop 3	Height 4	Stage of Maturity 5	Row		Ground Cover 8	Observations 9	Observer 10	JSC Comments 11
					Dir. 6	Width 7				
#03 6-13	42	SOYBEANS			1	38"	0	3 1 41	SELLMYER	
7-2	"	"	3"	1	"	"	"	42, 12	"	
7-17	"	"	11	1	1	38"	2	41	"	
8-3	"	"	30"	3	1	38"	4	41, 12	"	
8-29	"	"	30"	4	1	38"	4	41, 12	"	
9-10	"	"	30"	5	1	38"	4	41, 12	"	
9-27	"	"	30	6	1	38	3	42, 12	"	
#04 6-13	1	PASTURE	24"				0	4	SELLMYER	
7-2	"	"	"				0	"	"	
7-17	1	"	24"				0		"	
8-3	1	"	24"				0		"	
8-29	1	"	24				0	4	"	
9-10	1	"	20"				0	4	"	
9-27	1	"	20"				0	4	"	