

CROP IDENTIFICATION TECHNOLOGY ASSESSMENT
FOR REMOTE SENSING (CITARS)

VOLUME II

GROUND-TRUTH FIELD OBSERVATIONS OF THE AGRICULTURAL
STABILIZATION AND CONSERVATION SERVICE

PART 6

LEE COUNTY, ILLINOIS



National Aeronautics and Space Administration
LYNDON B. JOHNSON SPACE CENTER

Houston, Texas

February 1975

CROP IDENTIFICATION TECHNOLOGY ASSESSMENT
FOR REMOTE SENSING (CITARS)

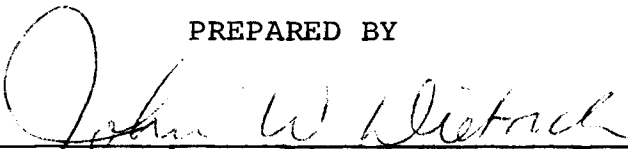
VOLUME II

GROUND-TRUTH FIELD OBSERVATIONS OF THE AGRICULTURAL
STABILIZATION AND CONSERVATION SERVICE

PART 6

LEE COUNTY, ILLINOIS

PREPARED BY




John W. Dietrich

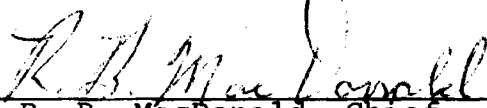
APPROVED BY



Robert M. Bizzell, Project Manager



Andrew E. Potter, Acting Chief
Research, Test, and Evaluation Branch



R. B. MacDonald, Chief
Earth Observations Division

NATIONAL AERONAUTICS AND SPACE ADMINISTRATION
LYNDON B. JOHNSON SPACE CENTER
HOUSTON, TEXAS

February 1975

Page ii is blank

PREFACE

Volume II has the ground-truth field observations of Huntington, Shelby, and White Counties, Indiana, and Livingston, Fayette, and Lee Counties, Illinois. Part 6: Lee County, Illinois, contains the handwritten observations in the nonmetric units of measure used by the Agricultural Stabilization and Conservation Service of the U.S. Department of Agriculture.

Page iv is blank

v

ACKNOWLEDGMENT

The author of this volume acknowledges the Agricultural Stabilization and Conservation Service of the U.S. Department of Agriculture for the compilation of ground-truth field observations in Lee County.

GLOSSARY

Acre - unit of measure equaling 4,046 meters²

ASCS - Agricultural Stabilization and Conservation Service
of the U.S. Department of Agriculture

CITARS - Crop Identification Technology Assessment for
Remote Sensing

Co. - county

Conf - confidence, the photointerpreter's estimate, expressed
in a percentage, of how well he identified the subject
crop

Dir. - direction

E - east

Est. - estimate

Ground-truth quarter sections - ground observations by the
Agricultural Stabilization and Conservation Service of
selected 0.4-kilometer (0.25-mile) sections in each of
the six selected counties in Indiana and Illinois

ID - identification

Inch - unit of measure equaling 2.54 centimeters²

JSC - Lyndon B. Johnson Space Center, Houston, Texas

viii

Meas. - measured

N - north

No. - number

Pilot section - one of about 144 sections selected within six counties in Indiana and Illinois for the evaluation of crop proportions in aerial photographs

R - range

Section - a 2.6-kilometer² (1-mile²) township and range section in the six selected counties in Indiana and Illinois

T - township

Test area segment - a 256-kilometer² (100-mile²) area measuring 8 by 32 kilometers (5 by 20 miles) selected in each of the six counties in Indiana and Illinois

Test section - one of about 144 sections selected within six counties in Indiana and Illinois for the identification of crops from aerial photographs

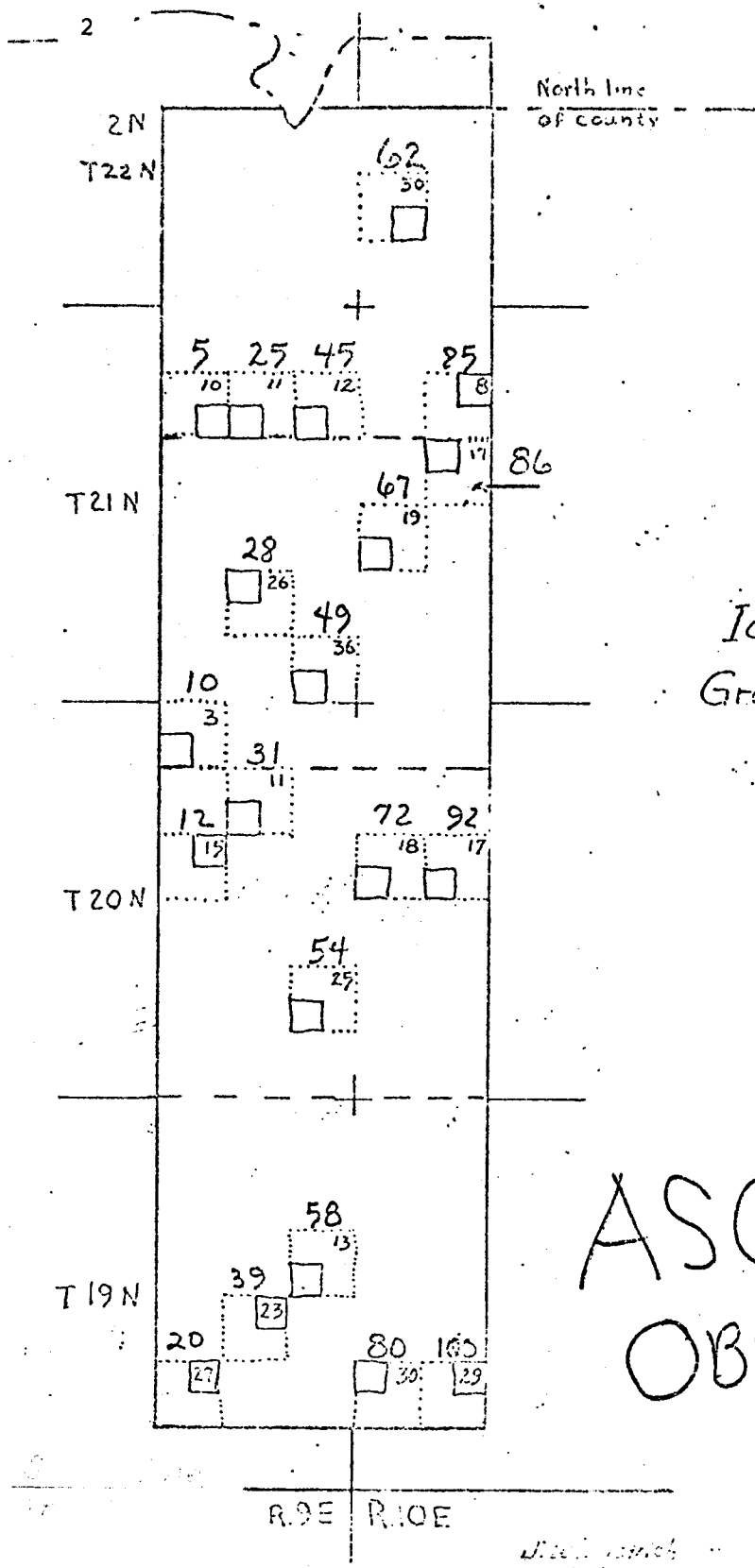
TWP - township

CONTENTS

Section	Page
1.0 <u>GROUND-TRUTH FIELD OBSERVATIONS</u>	1

1.0 GROUND-TRUTH FIELD OBSERVATIONS

On the following pages appear the ground-truth field observations of Lee County, Illinois, gathered by the Agricultural Stabilization and Conservation Service of the U.S. Department of Agriculture. The first two figures and table show idealized sketches of the test area segment and the correlation of the new section numbers of the Crop Identification Technology Assessment for Remote Sensing with the old township, range, and section numbers. Using the old numbers, the next tables give the field observations of townships 19, 20, 21, and 22 north. Within each township, ranges and sections are ordered numerically; and within each section, fields are ordered numerically. All abbreviations in the tables are defined in the Glossary.



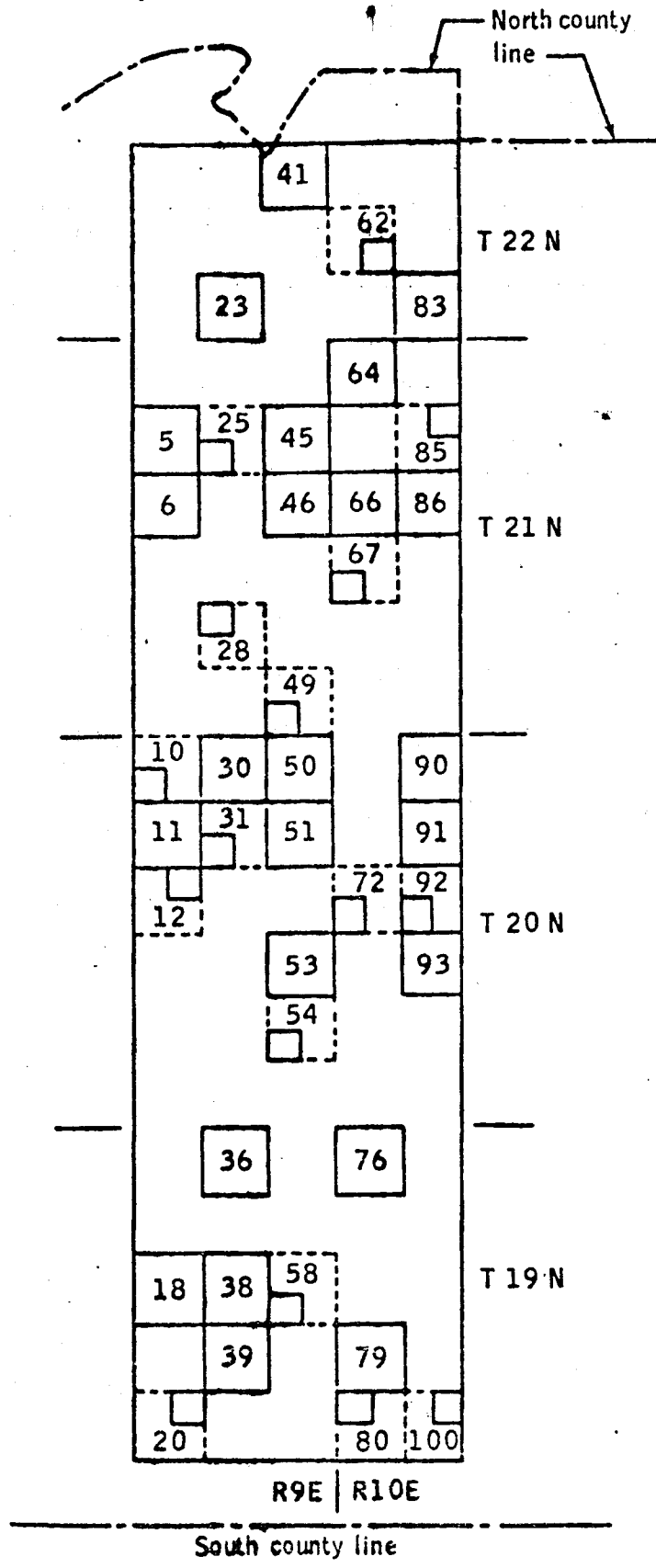
LEE Co.

ILLINOIS

Idealized Sketch of
Ground Investigation Tracks

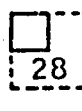
ASCS GROUND
OBSERVATIONS

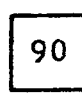
6/4/73



CITARS segment 6
Lee County

Idealized sketch of
test area segment

 Quarter-section tract
with ASCS data used
by image interpreters

 Test and pilot sections

South county line

SEGMENT 6
LEE COUNTY, ILLINOIS

CORRELATION OF CITAR SECTION NUMBERS
WITH THE TOWNSHIP/RANGE/SECTION DESIGNATION

OLD DESIGNATION			NEW SECTION NO.	OLD DESIGNATION			NEW SECTION NO.
TWP	RANGE	SECTION		TWP	RANGE	SECTION	
21 N	9 E	10	5	20 N	9 E	12	51
21 N	9 E	15	6	20 N	9 E	24	53
20 N	9 E	3	*10	20 N	9 E	25	*54
20 N	9 E	10	11	19 N	9 E	13	*58
20 N	9 E	15	*12	22 N	10 E	30	*62
19 N	9 E	15	18	21 N	10 E	6	64
19 N	9 E	27	*20	21 N	10 E	18	66
22 N	9 E	35	23	21 N	10 E	19	*67
21 N	9 E	11	*25	20 N	10 E	18	*72
21 N	9 E	26	*28	19 N	10 E	6	76
20 N	9 E	2	30	19 N	10 E	19	79
20 N	9 E	11	*31	19 N	10 E	30	*80
19 N	9 E	2	36	22 N	10 E	32	83
19 N	9 E	14	38	21 N	10 E	8	*85
19 N	9 E	23	39	21 N	10 E	17	86
22 N	9 E	24	41	20 N	10 E	5	90
21 N	9 E	12	45	20 N	10 E	8	91
21 N	9 E	13	46	20 N	10 E	17	*92
21 N	9 E	36	*49	20 N	10 E	20	93
20 N	9 E	1	50	19 N	10 E	29	*100

* Section with ASCS ground investigation data available to image interpretation team.

6-15-73

CROP ID TECHNOLOGY ASSESSMENT
IDENTIFICATION SUMMARY

5

CITARS 6-58

County LEE

Township 19N - Range 9E Section 13

Field No.	Crop	Crop ID Data			R o w		Area (acres)			Comments	
		Conf.	Date	Source	Dir.	Width	Est.	Meas.	Analyst		
61	SOYA						24			12" 6-30	
62	SOYA						16			12" 6-30	
63	SOYA						22			<6" 6-11	
64	Oats						14			Harvested after 7-18	
	Regrowth through September										
65	CORN						23			6" 6-11	
66	SOYA						38			6" 6-30	
67	Farmstead						4				
68	Water-way with brush and Pond.							8			

6-15-73

 ASCS SUPPORT FOR CROP ID TECHNOLOGY ASSESSMENT
 BY FIELD SUMMARY OF GROUND OBSERVATIONS #6-58

 County LEE Township 19N Range 9E Section 13 Field 61 + 62

Date 1	Acres est. 2	Crop 3	Height 4	Stage of Maturity 5	Row		Ground Cover 8	Observations 9	Observer 10	JSC Comments 11
					Dir. 6	Width 7				
#61 6-11	24	CORN STALKS	1942						SULLIVAN	
6-30	"	Soyas	12"	Prebloom	2	38	0		"	
7-18	"	"	12"	"	2	38	1		"	
8-6	"	"	24"	Blooming	2	38	3	0	"	
8-24	"	"	36	Late Pod	2	38	3	0	"	
9-E	"	"	36	4	2	38	4		"	
9-27	"	"	36	6	2	38	3	2 4	"	
#62 6-11	16	Plowed ground with ^{4 or 5 acre} strips of						SEEDING IN MIDDLE	Sullivan	
6-30	"	Soyas	12"	Prebloom	2	38	0		"	
7-18	"	"	12"	"	2	38	1		"	
8-6	"	"	24"	Blooming	2	38	3	0	"	
8-24	"	"	42	Late Pod Set	2	38	3	0	"	
9-E	"	"	36	4	2	38	4		"	
9-27	"	"	36	6	2	38	3	2 4	"	

6-15 '3

ASCS SUPPORT FOR CROP ID TECHNOLOGY ASSESSMENT

BY FIELD SUMMARY OF GROUND OBSERVATIONS

County LEE Township 19N Range 9E Section 13 Field 63 + 64

Date 1	Acres est. 2	Crop 3	Height 4	Stage of Maturity 5	Row		Ground Cover 8	Observations 9	Observer 10	JSC Comments 11
					Dir. 6	Width 7				
#63 6-11	22	SOYA	less than 6"	Prebloom	1	38"	0	0	Sullivan	
6-30	"	Soya	12"	"	2	"	2	2	"	
7-18	"	"	30"	Blooming	1	38"	3		"	
8-6	"	"	36"	EARLY Pod Set	1	38"	4	0	"	
8-24	"	"	42"	LATE Pod Set	4	38"	4	36	"	
9-E	"	"	42"	5	1	38"	4		"	
9-24	"	"	42"	6	1	38"	3	24	"	
#64 6-11	14	OATS	22"	1 + 2	0	-	4	0	Sullivan	
6-30	"	"	30"	Turning	"	0	"		"	
7-18	"	"	"	-	0		4	Ripened	"	
8-6	"	"	HARVESTED		0	-	4	0	"	
8-24	"	"	6"		0	0	4	24	"	
9-E	"	"	6"		0	0	4		"	
9-24	"	"	12"	0	0	0	4	6	"	

6-15 73

88

ASCS SUPPORT FOR CROP ID TECHNOLOGY ASSESSMENT

BY FIELD SUMMARY OF GROUND OBSERVATIONS

County LEE Township 19N Range 9E Section 13 Field 65+66

Date 1	Acres est. 2	Crop 3	Height 4	Stage of Maturity 5	R o w		Ground Cover 8	Observations 9	Observer 10	JSC Comments 11
					Dir. 6	Width 7				
#65 6-11	23	CORN	6"	PRETASSEL	1	36"	0	0	Sullivan	
6-30	"	"	36"	"	1	"	4		"	
7-18	"	"	72"	TASSELED	1	36	4		"	
8-6	"	"	72"	"	1	36	4	0	"	
8-24	"	"	72"	TASSELED	1	36	4	0	"	
9-E	"	"	72"	3	1	36	4		"	
9-27	"	"	72"	3	1	36	4	0	"	
#66 6-11	38	Sogas	NOT UP	Prebloom	1	36"	0	0	Sullivan	
6-30	"	Soga	6"	"	1	"	0		"	
7-18	"	"	18"	Blooming	1	36	2		"	
8-6	"	"	30"	EARLY Pod Set	1	36		HAIL DAMAGED		
8-24	"	"	36	LATE Pod Set	1	36	3	0	"	
9-E	"	"	38	5	1	36"	4		"	
9-27	"	"	38	6	1	36	3	24	"	

6-1-73

ASCS SUPPORT FOR CROP ID TECHNOLOGY ASSESSMENT

BY FIELD SUMMARY OF GROUND OBSERVATIONS

County LEE Township 19 N Range 9 E Section 13 Field 67 + 68

Date 1	Acres est. 2	Crop 3	Height 4	Stage of Maturity 5	Row		Ground Cover 8	Observations 9	Observer 10	JSC Comments 11
					Dir. 6	Width 7				
#67 6-11	4	FARMSTEAD						①	Sullivan	
6-30	"	Bldg.							"	
7-18	"	"							"	
8-6	"	FARMSTEAD							"	
8-24	"	"							"	
9-E	"	"							"	
9-27	"	"							"	
#68 6-11	8	WATER-way + Brush Pond (etc.)							Sullivan	
6-30	"	"							"	
7-18	8	"							"	
8-6	"	"							"	
8-24	"	"							"	
9-E	"	"							"	
9-27	"	"							"	

6-15-73

CROP ID TECHNOLOGY ASSESSMENT
IDENTIFICATION SUMMARY

CITARS 6-39

County LEE

Township 19N

Range 9E

Section 23

Field No.	Crop	Crop ID Data			R o w		Area (acres)			Comments
		Conf.	Date	Source	Dir.	Width	Est.	Meas.	Analyst	
21	CORN						37			6" 6-11
22	CORN						40			6" 6-11
23	Hay						20			
24	Hay						8			
25	Hay						8			
26	Oats						38			Harvested after 7-19
	Regrowth through Sect.									
27	Building Site						5			

6-1-73

ASCS SUPPORT FOR CROP ID TECHNOLOGY ASSESSMENT

BY FIELD SUMMARY OF GROUND OBSERVATIONS #6-39

County LEE Township 19 N Range 9 E Section 23 Field 21 + 22

Date 1	Acres est. 2	Crop 3	Height 4	Stage of Maturity 5	R o w		Ground Cover 8	Observations 9	Observer 10	JSC Comments 11
					Dir. 6	Width 7				
#21 6-11	34	CORN	6"	PRE-TASSEL	2	38"	0	0	SULLIVAN	
6-30	"	"	30"	"	"	"	2		"	
7-19	"	"	72"	Partially TASSELED	2	38"	4	HAIL DAMAGED	"	
8-6	"	"	102	TASSELED	2	38"	4	0	"	
8-24	"	"	102	"	2	38"	4	0	"	
9-E	"	"	102	3	2	38"	4		"	
9-21	"	"	102	3	2	38"	4	0	"	
#22 6-11	40	CORN	6"	PRE-TASSEL	2	38"	0	0	SULLIVAN	
6-30	"	"	30	"	"	"	2		"	
7-19	"	"	72	"	2	38"	4	HAIL DAMAGED	"	
8-6	"	"	102	TASSELED	2	38"	4	0	"	
8-24	"	"	102	"	2	38"	4	0	"	
9-E	"	"	102	3	2	38"	4		"	
9-24	"	"	102	3	2	38"	4	0	"	

6-15-73

ASCS SUPPORT FOR CROP ID TECHNOLOGY ASSESSMENT

12

BY FIELD SUMMARY OF GROUND OBSERVATIONS

County LEE Township 19 N Range 9 E Section 23 Field 23+24

Date 1	Acres est. 2	Crop 3	Height 4	Stage of Maturity 5	Row		Ground Cover 8	Observations 9	Observer 10	JSC Comments 11
					Dir. 6	Width 7				
#23 6-11	20	HAY	21"		0	-	4	11	SULLIVAN	
6-30	"	"	18"	Being Grazed	"		4		"	
7-19	"	"			0		4	PARTIALLY Mowed	"	
8-6	"	"	42"	Regrowth ^{12"}	0	0	4	PART Clipped	"	
8-24	"	"	12"	-	0	0	4	6	"	
9-E	"	"	12"		0	0	4	6	"	
9-27	"	"	12	-	0	0	4	6	"	
#24 6-11	8	HAY	Being Grazed	8"	0	-	4	0	SULLIVAN	
6-30	"	"	30"	"	0		4		"	
7-19	"	"	24'		0		4	GRAZING	"	
8-6	"	"	42"		0	0	4	Being GRAZED	"	
8-24	"	"	12	-	0	0	4	6	"	
9-E	"	"	12		0	0	4	23	"	
9-27	"	"	12	-	0	0	4	6-23	"	

6-15-73

ASCS SUPPORT FOR CROP ID TECHNOLOGY ASSESSMENT

BY FIELD SUMMARY OF GROUND OBSERVATIONS

County LEE Township 19N Range 9E Section 23 Field 25 & 26

Date 1	Acres est. 2	Crop 3	Height 4	Stage of Maturity 5	Row		Ground Cover 8	Observations 9	Observer 10	JSC Comments 11
					Dir. 6	Width 7				
#25 6-11	8	HAY	21'		0	-	4	6	SULLIVAN	
6-30	"	"	30"	Has been grazed	0		4		"	
7-19	"	"	54"-Standing 18"-Clipped		0		4	Partially Clipped	"	
8-6	"	"	42'		0	0	4	Being Grazed	"	
8-24	"	"	12-18	—	0	0	4	6	"	
9-E	"	"	12		0	0	4	23	"	
9-27	"	"	12	—	0	0	4	6-23	"	
#26 6-11	38	OATS	12"	Boot	0	-	4	11	SULLIVAN	
6-30	"	"	30'	Headed	0		4		"	
7-19	"	"	"	—	0		4	Partially Ripened	"	
8-6	"	"	6"		0	0	4	HARVESTED	"	
8-24	"	"	6"	—	0	0	4	21	"	
9-E	"	"	12		0	0	4	6	"	
9-27	"	"	12	—	0	0	4	6	"	

6-15-73

14

ASCS SUPPORT FOR CROP ID TECHNOLOGY ASSESSMENT
BY FIELD SUMMARY OF GROUND OBSERVATIONS

County LEE Township 19N Range 9E Section 23 Field 27

#27

Date 1	Acres est. 2	Crop 3	Height 4	Stage of Maturity 5	Row		Ground Cover 8	Observations 9	Observer 10	JSC Comments 11
					Dir. 6	Width 7				
6-11	5	Bldg. Site							SULLIVAN	
6-30	"	"							"	
7-19	5	"	_____	_____			_____		"	
8-6	5	"	_____	_____			_____		"	
8-24	5	"	_____	_____			_____		"	
9-E	5	Bldg. Site	_____	_____			_____		"	
9-27	5	"	_____	_____			_____		"	

CROP ID TECHNOLOGY ASSESSMENT
IDENTIFICATION SUMMARY

County LEE

Township 19 N

Range 9 E

Section 27

CITARS # 6-20

Field No.	Crop	Crop ID Data			Row		Area (acres)			Comments
		Conf.	Date	Source	Dir.	Width	Est.	Meas.	Analyst	
21	Oats						4			Mowed after 6-30
22	SOYA						15			6" 6-30
23	CORN						56			6" 6-11
24	CORN						25			<6" 6-11
25	CORN						5			18" 6-30
26	CORN						46			6" 6-11
27	Buildings						3			
28	CORN						5			18" 6-30

6-15-3

 ASCS SUPPORT FOR CROP ID TECHNOLOGY ASSESSMENT
 BY FIELD SUMMARY OF GROUND OBSERVATIONS

#6-20

16

 County LEE Township 19N Range 9E Section 27 Field 21 + 22

Date 1	Acres est. 2	Crop 3	Height 4	Stage of Maturity 5	Row		Ground Cover 8	Observations 9	Observer 10	JSC Comments 11
					Dir. 6	Width 7				
#21 6-11	4	OATS	12"	BOOT	0	-	4	32	SULLIVAN	
6-30	"	"	30"	Headed	"	0	4		"	
7-19	"	"	12'		0		4	Mowed	"	
8-6	"	"			0	0	4	HARVESTED (21)	"	
8-24	"	"	24	-	0	0	4	6	"	
9-E	"	"	24		0	0	4	6	"	
9-27	"	"	24	-	0	0	4	6	"	
#22 6-11	15	SOYA	NOT UP	-	2	38"	0	0	SULLIVAN	
6-30	"	Soybeans	6"	Preblossom	"	"	1		"	
7-19	"	"	18"	Blooming	2	38"	2	Weedy	"	
8-6	"	SOYA	30"	Early Pod Set	2	38"	3	0	"	
8-24	"	"	30"	LATE Pod Set	2	38"	3	0	"	
9-E	"	"	30"	5	2	38"	4		"	
9-27	"	"	30"	6	2	38"	3	24	"	

6-15-73

ASCS SUPPORT FOR CROP ID TECHNOLOGY ASSESSMENT
 BY FIELD SUMMARY OF GROUND OBSERVATIONS

6-20

County LEE Township 19 N Range 9 E Section 27 Field 23 + 24

Date 1	Acres est. 2	Crop 3	Height 4	Stage of Maturity 5	Row		Ground Cover 8	Observations 9	Observer 10	JSC Comments 11
					Dir. 6	Width 7				
#23 6-11	56	CORN	6"	Pretassel	2	38"	0	0	SULLIVAN	
6-30	"	"	24"	"	"	"	2	Very Spotted	"	
7-19	"	"	60"	Tassel Shooting	2	38'	3		"	
8-6	"	"	78"	TASSELED	2	38'	4	0	"	
8-24	"	"	84	"	2	38"	4	Aphid	"	
9-E	"	"	84	3	2	38	4		"	
9-27	"	"	84	3	2	38	4	0	"	
#24 6-11	30	CORN	Less than 6"	Pretassel	1	38"	0	0	SULLIVAN	
6-30	25'	"	36"	"	"	38"	3		"	
7-19	"	"	84	Shooting Tassel	1	38"	4		"	
8-6	"	"	108"	TASSELED	1	38"	4	0	"	
8-24	25	"	108'	"	1	38	4	Aphid	"	
9-E	"	"	108"	3	1	38	4		"	
9-27	"	"	108	3	1	38	4	36	"	

6-15-73

8T

ASCS SUPPORT FOR CROP ID TECHNOLOGY ASSESSMENT

BY FIELD SUMMARY OF GROUND OBSERVATIONS

County LEE Township 19N Range 9E Section 27 Field 25+26

Date 1	Acres est. 2	Crop 3	Height 4	Stage of Maturity 5	R o w		Ground Cover 8	Observations 9	Observer 10	JSC Comments 11
					Dir. 6	Width 7				
#25 6-11	5	CORN	NOT UP	PRETASSEL	2	38"	0	NOT UP 0	SULLIVAN	
6-30	"	"	18"	"	"	"	1		"	
7-19	"	"	60	"	2	38"	3		"	
8-6	"	"	96"	TASSELED	2	38	4	0	"	
8-24	"	"	96	"	2	38	4	"	"	
9-E	"	"	96	2	2	38	4		"	
9-27	"	"	96	3	2	38	4	0	"	
#26 6-11	46	CORN	6"	PRETASSEL	2	38	0	32	SULLIVAN	
6-30	"	"	36"	"	2	"	3		"	
7-19	"	"	42"	TASSELED	2	38	4		"	
8-6	"	"	90"	TASSELED	2	38	4	0	"	
8-24	"	"	96	"	2	38"	4	"	"	
9-E	"	"	96	3	2	38	4		"	
9-27	"	"	96	3	2	38	4	0	"	

6-15-73

ASCS SUPPORT FOR CROP ID TECHNOLOGY ASSESSMENT

BY FIELD SUMMARY OF GROUND OBSERVATIONS

County LEE Township 19N Range 9E Section 27 Field 27428

Date 1	Acres est. 2	Crop 3	Height 4	Stage of Maturity 5	R o w		Ground Cover 8	Observations 9	Observer 10	JSC Comments 11
					Dir. 6	Width 7				
#27 6-11	3	Bldgs							SULLIVAN	
6-30	"	"							"	
7-19	"	"	—						"	
8-6	"	"	—						"	
8-24	"	"	—						"	
9-E	"	"	—						"	
9-27	"	"	—						"	
#28 6-30	5	CORN	18"		1		2		SULLIVAN	
7-19	"	"	60"	PRETASSEL	1	38"	3		"	
8-6	"	"	96"	TASSELED	1	38	4	0	"	
8-24	"	"	96"	"	1	38	4	APPLIED	"	
9-E	"	"	96	2	1	38"	4		"	
9-27	"	"	96	3	1	38	4	0	"	

6-15-73

CROP ID TECHNOLOGY ASSESSMENT
IDENTIFICATION SUMMARY

CITARS #6-100

County LEE

Township 19 N

Range 10 E

Section 29

Field No.	Crop	Crop ID Data			R o w		Area (acres)			Comments
		Conf.	Date	Source	Dir.	Width	Est.	Meas.	Analyst	
21	CORN						29			<6" 6-11
22	Hay						10			
23	CORN						15			12" 6-30
24	SOYA						22			6" 6-30
25	Oats						6		planted late, never headed.	
26	SOYA						8			6" 6-30
27	Pasture						43			
28	Buildings & Pasture						8			
29	SOYA						19			<6" 6-11

6-15-73

 ASCS SUPPORT FOR CROP ID TECHNOLOGY ASSESSMENT
 BY FIELD SUMMARY OF GROUND OBSERVATIONS

#6-100

County LEETownship 19 NRange 10 ESection 29Field 21+22

Date 1	Acres est. 2	Crop 3	Height 4	Stage of Maturity 5	Row		Ground Cover 8	Observations 9	Observer 10	JSC Comments 11
					Dir. 6	Width 7				
#21 6-11	29	CORN	LESS THAN 6	PRETASSEL	2	40"	0	0	SULLIVAN	
6-30	"	"	24"	"	"	"	4	12	"	
7-19	"	"	60	"	2	40	3	UNEVEN	"	
8-6	"	"	84	TASSELED	2	40	4	0	"	
8-24	"	"	90"	"	2	40	4	0	"	
9-E	"	"	90"	3	2	40"	4		"	
9-27	"	"	90	3	2	40	4	0	"	
#22 6-11	10	HAY	30"		0	-	4	0	SULLIVAN	
6-30	"	"	24"	Never Mowed	"	0	"		"	
7-19	"	"	6"	—	0		4	Regrowth	"	
8-6	"	"	24"		0	0	4	Regrowth	"	
8-24	"	"	24"	—	0	0	4	6	"	
9-E	"	"	24		0	0	4	6	"	
9-27	"	"	24	-	0	0	4	6	"	

6-15-73

ASCS SUPPORT FOR CROP ID TECHNOLOGY ASSESSMENT

22

BY FIELD SUMMARY OF GROUND OBSERVATIONS

County LEE Township 19N Range 10E Section 29 Field 23+24

Date 1	Acres est. 2	Crop 3	Height 4	Stage of Maturity 5	R o w		Ground Cover 8	Observations 9	Observer 10	JSC Comments 11
					Dir. 6	Width 7				
#23 6-11	15	Corn	Not up	PRETASSEL	2	40"	0	0	SULLIVAN	
6-30	"	"	12"	"	2	"	0		"	
7-19	"	"	54	"	2	40	3		"	
8-6	"	"	84	TASSELED	2	40	4	0	"	
8-24	"	"	90"	"	2	40	4	0	"	
9-E	"	"	90'	3	2	40	4		"	
9-27	"	"	90	3	2	40	4	0	"	
#24 6-11	22	Soga	Not up	PREbloom	2	40"	0	0	SULLIVAN	
6-30	"	Soga	6"	"	2	40"	"		"	
7-19	"	"	18"	Blooming	2	40"	2		"	
8-6	"	"	30"	Bloom	2	40	3	0	"	
8-24	"	"	36	Late Pod Set	2	40	3	0	"	
9-E	"	"	36	4	2	40	4		"	
9-27	"	"	36	6	2	40	3	2 kinds of weeds		

6-15-73

ASCS SUPPORT FOR CROP ID TECHNOLOGY ASSESSMENT

BY FIELD SUMMARY OF GROUND OBSERVATIONS

County LEE Township 19 N Range 10 E Section 29 Field 25+26

Date 1	Acres est. 2	Crop 3	Height 4	Stage of Maturity 5	R o w		Ground Cover 8	Observations 9	Observer 10	JSC Comments 11
					Dir. 6	Width 7				
6-11	6	Oats	Not up	-	Sowed	-	0	(1)	SULLIVAN	
6-30	"	"	6"	Boot	0	0	4		"	
7-19	"	"	18"	"	0		4		"	
8-6	"	"	30"	Boot	0	0	4	0	"	
8-24	"	"	Stg. Mostly Grass		0	0	4	0	"	
9-E	"	"	30		0	0	4	PLANTED LATE + NEVER HEADED	"	
9-24	"	"	30	-	0	0	4	0	"	
6-11	8	Soyas	Not up	Prebloom	2	40"	0	0	SULLIVAN	
6-30	"	"	6"	"	2	40	0		"	
7-19	"	"	18"	Blooming	2	40	2		"	
8-6	"	"	30"	"	2	40	3		"	
8-24	"	"	36	LATE Rd Set	2	40	3	0	"	
9-E	"	"	36	4	2	40	4		"	
9-24	"	"	36	6	2	40	3	0	"	

6-15-73

24

ASCS SUPPORT FOR CROP ID TECHNOLOGY ASSESSMENT

BY FIELD SUMMARY OF GROUND OBSERVATIONS

County LEE Township 19 N Range 10 E Section 29 Field 27+28

Date 1	Acres est. 2	Crop 3	Height 4	Stage of Maturity 5	Row		Ground Cover 8	Observations 9	Observer 10	JSC Comments 11
					Dir. 6	Width 7				
#27 6-11	43	PERM PASTURE							SULLIVAN	
6-30	43	"							"	
7-19	"	"							"	
8-6	"	PERM PASTURE							"	
8-24	"	"							"	
9-E	"	"							"	
9-27	"	"							"	
#28 6-11	8	Bldg. Site + PERM PASTURE							SULLIVAN	
6-30	"	"							"	
7-19	"	"							"	
8-6	"	"							"	
8-24	"	"							"	
9-E	"	"							"	
9-27	"	"							"	

6-15-73

ASCS SUPPORT FOR CROP ID TECHNOLOGY ASSESSMENT

BY FIELD SUMMARY OF GROUND OBSERVATIONS

County LEETownship 19 NRange 10 ESection 29Field 29

Date 1	Acres est. 2	Crop 3	Height 4	Stage of Maturity 5	Row		Ground Cover 8	Observations 9	Observer 10	JSC Comments 11
					Dir. 6	Width 7				
6-11	19	Soybean	Less than 6	Prebloom	2	40"	0	0	SULLIVAN	
6-30	"	"	6"	"	"	"	1		"	
7-19	"	"	18	Blooming	2	40	2		"	
8-6	"	"	30	"	2	40	3	0	"	
8-24	"	"	36	LATE Pod Set	2	40	3	0	"	
9-8	"	"	36	4	2	40	4		"	
9-27	"	"	36	6	2	40	3	0	"	

25

6-15-73

CROP ID TECHNOLOGY ASSESSMENT
IDENTIFICATION SUMMARY

CITARS 6-80

County LLE Township 19N Range 10E Section 30

Field No.	Crop	Crop ID Data			Row		Area (acres)			Comments
		Conf	Date	Source	Dir.	Width	Est.	Meas.	Analyst	
01	Hay						24			
02	CORN						13			<6" 6-11
03	Dats						20			Harvested after 7-19
	Regrowth through September									
04	SOYA						19			<6" 6-11
05	SOYA						16			<6" 6-11
06	CORN						20			<6" 6-11
07	SOYA						9			<6" 6-11
08	CORN						29			<6" 6-11
09	Building site						3			
10	Trees						2			

6-15-13

ASCS SUPPORT FOR CROP ID TECHNOLOGY ASSESSMENT

BY FIELD SUMMARY OF GROUND OBSERVATIONS #6-80

County LEETownship 19 NRange 10 ESection 30Field 01 + 02

Date 1	Acres est. 2	Crop 3	Height 4	Stage of Maturity 5	R o w		Ground Cover 8	Observations 9	Observer 10	JSC Comments 11
					Dir. 6	Width 7				
#01 6-11	24	HAY	27"		0	-	4	0	SULLIVAN	
6-30	"	"	6" to Waterway 36" Post Waterway		0	0	4		"	
7-19	"	"	18"-6" South of Waterway		0		4	Regrowth	"	
8-6	"	"	12"		0	0	4	6	"	
8-24	"	"	24	Blossom Dried Up	0	0	4	6	"	
9-E	"	"	24	Part Done Seed Combined	0	0	4	6	"	
9-27	"	"	24	-	0	0	4	Partly Combined Plowed to	"	
#02 6-11	13	CORN	Less than 6"	Pre-tassel	1	40"	0	0	SULLIVAN	
6-30	"	"	42"	"	"	"	4		"	
7-19	"	"	84"	TASSELLED	1	40	4		"	
8-6	"	"	96"	"	1	40	4		"	
8-24	"	"	96"	TASSELLED	1	40	4	0	"	
9-E	"	"	96	3	1	40	4		"	
9-27	"	"	96	3	1	40	4	0	"	

6-15-13

ASCS SUPPORT FOR CROP ID TECHNOLOGY ASSESSMENT

28

BY FIELD SUMMARY OF GROUND OBSERVATIONS

County LEE Township 19N Range 10E Section 30 Field 03 + 04

Date	Acres est.	Crop	Height	Stage of Maturity	Row		Ground Cover	Observations	Observer	JSC Comments
					Dir.	Width				
1	2	3	4	5	6	7	8	9	10	11
#03 6-11	20	DAKs	12"	Boot	0	-	4	11	SULLIVAN	
6-30	"	"	30"	Headed	0	0	4		"	
7-19	"	"	"	—	0		4	Ripe	"	
8-6	"	"			0	0	4	HARVESTED	"	
8-24	"	"	6	—	0	0	4	21	"	
9-5	"	"	12		0	0	4	6	"	
9-27	"	"	12	—	0	0	4	6	"	
#04 6-11	19	Soga	Less than 6"	Prebloom	1	40"	0	0	SULLIVAN	
6-30	"	"	12	"	"	"	2		"	
7-19	"	"	30"	Blooming	1	40	4		"	
8-6	"	"	36"	EARLY Pod	1	40	3		"	
8-24	"	"	42	Late Pod Set	1	40	4	0	"	
9-5	"	"	42	5	1	40	4		"	
9-27	"	"	42	6	1	40	3	24	"	

6-15-73

ASCS SUPPORT FOR CROP ID TECHNOLOGY ASSESSMENT

BY FIELD SUMMARY OF GROUND OBSERVATIONS

County LEE Township 19N Range 10E Section 30 Field 05 + 06

Date	Acres est.	Crop	Height	Stage of Maturity	Row		Ground Cover	Observations	Observer	JSC Comments
					Dir.	Width				
1	2	3	4	5	6	7	8	9	10	11
#05 6-11	16	Soga	Less than 6	Prebloom	1	40"	0	0	SULLIVAN	
6-30	"	"	18"	"	"	"	2		"	
7-19	"	"	30'	Blooming	1	40	4		"	
8-6	"	"	36"	Early Pod	1	40	3		"	
8-24	"	"	42'	LATE Pod Set	1	40	4	0	"	
9-E	"	"	42	5	1	40	4		"	
9-24	"	"	42	6	1	40	3	24	"	
#06 6-11	20	CORN	Less than 6	Pre-tasseled	1	40	0	0	SULLIVAN	
6-30	"	"	42'	"	"	"	4		"	
7-19	"	"	84"	TASSELED	1	40	4		"	
8-6	"	"	96"	"	1	40	4		"	
8-24	"	"	96	TASSELED	1	40	4	Aphid	"	
9-E	"	"	96	3	1	40	4		"	
9-24	"	"	96	3	1	40	4		"	

6-15-13

30

ASCS SUPPORT FOR CROP ID TECHNOLOGY ASSESSMENT

BY FIELD SUMMARY OF GROUND OBSERVATIONS

County LEE Township 19N Range 10E Section 30 Field 07+08

Date 1	Acres est. 2	Crop 3	Height 4	Stage of Maturity 5	Row		Ground Cover 8	Observations 9	Observer 10	JSC Comments 11
					Dir. 6	Width 7				
#07 6-11	9	Soga	Less than 6"	Prebloom	2	40"	0	0	SULLIVAN	
6-30	"	"	12"	"	"	40"	2		"	
7-19	"	"	36"	Blooming	2	40	4		"	
8-6	"	"	36"	EARLY Pod	2	40	3		"	
8-24	"	"	42"	LATE Pod SET	2	40	4	0	"	
9-E	"	"	42	5	2	40	4		"	
9-27	"	"	42	6	2	40	3	2.4	"	
#08 6-11	29	CORN	Less than 6"	Pre-tassel	2	40"	0	0	SULLIVAN	
6-30	"	"	36"	"	"	"	3		"	
7-19	"	"	84"	TASSELED	2	40"	4		"	
8-6	"	"	96"	TASSELED	2	40"	4		"	
8-24	"	"	96"	"	2	40	4	0	"	
9-E	"	"	96"	3	2	40	4		"	
9-27	"	"	96	3	2	40	4	0	"	

6-15-73

ASCS SUPPORT FOR CROP ID TECHNOLOGY ASSESSMENT

BY FIELD SUMMARY OF GROUND OBSERVATIONS

County LEE Township 19 N Range 10 E Section 30 Field 09 + 10

Date 1	Acres est. 2	Crop 3	Height 4	Stage of Maturity 5	Row		Ground Cover 8	Observations 9	Observer 10	JSC Comments 11
					Dir. 6	Width 7				
#09 6-11	3	Bldg. Site							SULLIVAN	
6-30	"	"							"	
7-19	"	"	—				—		"	
8-6	"	"	—				—		"	
8-24	"	"	—				—		"	
9-E	"	"	—				—		"	
9-24	"	"	—				—		"	
#10 6-11	2	TREES							SULLIVAN	
6-30	2	"							SULLIVAN	
7-19	2	"	—				—		"	
8-6	2	"	—				—		"	
8-24	2	"	—				—		"	
9-E	2	"	—				—		"	
9-24	2	"	—				—		"	

6-15-73

CROP ID TECHNOLOGY ASSESSMENT
IDENTIFICATION SUMMARY

CITARS # 6-10

County LEE

Township 20N

Range 9E

Section 3

Field No.	Crop	Crop ID Data			Row		Area (acres)			Comments
		Conf.	Date	Source	Dir.	Width	Est.	Meas.	Analyst	
61	SOYA						47			6" 6-29
62	SOYA						34			6" 6-29
63	Hay						6			
64	Building S.H.						2			
65	Building S.H.						2			
66	CORN						260			up before 6-12

6-15-73

 ASCS SUPPORT FOR CROP ID TECHNOLOGY ASSESSMENT
 BY FIELD SUMMARY OF GROUND OBSERVATIONS

 County LEE Township 20N Range 9E Section 3 Field b1 + b2 #6-10

Date 1	Acres est. 2	Crop 3	Height 4	Stage of Maturity 5	Row		Ground Cover 8	Observations 9	Observer 10	JSC Comments 11
					Dir. 6	Width 7				
#61 6-12	47	Soga	Less than 6	Prebloom	2	30"	0	0	SULLIVAN	
6-29	"	Soga	6"	"	"	"	0		"	
7-18	"	"	24	Prebloom	2	30	3		"	
8-6	"	"	30'	EARLY Pod Set	2	30	4	0	"	
8-22	"	"	42'	Late Pod Set	2	30	4	32	"	
9-8	"	"	42	5	2	30	4		"	
9-27	"	"	42	6	2	30	4	24	"	
#62 6-12	34	Soya	Less than 6	Prebloom	1	36"	0	0	SULLIVAN	
6-29	"	"	6"	"	1	"	0		"	
7-18	"	"	18"	Blooming	1	36	2		"	
8-6	"	"	30'	EARLY Pod Set	1	36	4	0	"	
8-22	"	"	36	Late Pod Set	1	36	4	0	"	
9-8	"	"	36	4 + 5	1	36	4	37	"	
9-27	"	"	36	6	1	36	4	24, 37	"	

6-15-73

34

ASCS SUPPORT FOR CROP ID TECHNOLOGY ASSESSMENT

BY FIELD SUMMARY OF GROUND OBSERVATIONS

County LEE Township 20N Range 9E Section 3 Field 63 + 64

Date 1	Acres est. 2	Crop 3	Height 4	Stage of Maturity 5	Row		Ground Cover 8	Observations 9	Observer 10	JSC Comments 11
					Dir. 6	Width 7				
#63 6-12	6	SEEDING	36"		0	0	4	32	SULLIVAN	
6-29	"	MAY	24'		0	0	4	Needy	"	
7-18	"	"	6"		0		4	Mowed	"	
8-6	"	Seeding	12"		0	0	4	REGrowth	"	
8-22	"	"	18"	—	0	0	4	6	"	
9-E	"	"	18"	5	0	0	4		"	
9-24	"	"	18	—	0	0	4	6	"	
#64 6-12	2	BLDG SITE							SULLIVAN	
6-29	2	"							"	
7-18	"	"							"	
8-6	"	"							"	
8-22	"	"							"	
9-E	"	"							"	
9-24	"	"							"	

6-15-73

ASCS SUPPORT FOR CROP ID TECHNOLOGY ASSESSMENT

BY FIELD SUMMARY OF GROUND OBSERVATIONS

County LEE Township 20N Range 9E Section 3 Field 65+66

Date 1	Acres est. 2	Crop 3	Height 4	Stage of Maturity 5	Row		Ground Cover 8	Observations 9	Observer 10	JSC Comments 11
					Dir. 6	Width 7				
#65 6-12	2	Bldg. Site							SULLIVAN	
6-29	2	"							"	
7-18	"	"							"	
8-6	2	"							"	
8-22	"	"							"	
9-E	"	"							"	
9-27	"	"							"	
#66 6-12	260	CORN		PRETASSEL	1	36"	0	2	SULLIVAN	
6-29	"	"	30"	"	"	"	2		"	
7-18	"	"	60"	"	1	36	4	Just Shooting TASSELS	"	
8-6	"	"	96"	TASSELED	1	36	4	0	"	
8-22	"	"	108"	"	1	36	4	Partially AHEAD	"	
9-E	"	"	108"	3	1	36	4		"	
9-27	"	"	108"	3	1	36	4	0	"	

6-15-73

CROP ID TECHNOLOGY ASSESSMENT
IDENTIFICATION SUMMARY

CITARS # 6-31

County LEE

Township 20N

Range 9E

Section 11

Field No.	Crop	Crop ID Data			Row		Area (acres)			Comments
		Conf	Date	Source	Dir.	Width	Est.	Meas.	Analyst	
61	CORN						33			6" 6-29
62	SOYA						14			emerged after 6-29
63	Oats						17			Harvested after 7-18 Tilled before 9-27
64	Pasture	with trees					18			
65	CORN						31			<6" 6-11
66	CORN						78			12" 6-29

6-15-73

 ASCS SUPPORT FOR CROP ID TECHNOLOGY ASSESSMENT
 BY FIELD SUMMARY OF GROUND OBSERVATIONS

 County LEE Township 20 N Range 9 E Section 11 #6-31 Field 61+62

Date 1	Acres est. 2	Crop 3	Height 4	Stage of Maturity 5	Row		Ground Cover 8	Observations 9	Observer 10	JSC Comments 11
					Dir. 6	Width 7				
#61 6-11	33	CORN	UNDER 6"	PRETASSEL	2	38"	0	NOT UP YET	SULLIVAN	
6-29	"	"	6'	"	"	"	0		"	
7-18	"	"	32'	"	2	38"	3		"	
8-6	"	"	90"		2	38"	4	0	"	
8-22	"	"	96	TASSELED	2	38"	4	0	"	
9-E	"	"	96	2	2	38	4		"	
9-27	"	"	96	3	2	38	4	0	"	
#62 6-11	14	TO BE Soyas						1	SULLIVAN	
6-29	"	Soga	-	Not Up	2	38	0	1	"	
7-18	"	Beans	24	Pretassel	2	38	2	Listed as Soya Before - Not up	"	
8-6	"	Beans	24	Blooming	2	38	3	0	"	
8-22	"	"	36	Late Pod Set	2	38	3	37	"	
9-E	"	"	36/4	4	2	38	4		"	
9-27	"	"	36	6	2	38	4	0	"	

6-15-73

ASCS SUPPORT FOR CROP ID TECHNOLOGY ASSESSMENT

38

BY FIELD SUMMARY OF GROUND OBSERVATIONS

County LEE Township 20N Range 9E Section 11 Field 63+64

Date 1	Acres est. 2	Crop 3	Height 4	Stage of Maturity 5	Row		Ground Cover 8	Observations 9	Observer 10	JSC Comments 11
					Dir. 6	Width 7				
#63 6-11	17	OATS	Less than 6	BOOT	0	-	4	11	SULLIVAN	
6-29	"	"	12	"	"	"	4	11	"	
7-18	"	"	30	HEADED	0		4		"	
8-6	"	"	HARVESTED		0	0	4	0	"	
8-22	"	"	12"	—	0	0		24	"	
9-E	"	"	12		0	0	4	6	"	
9-24	"	Bare Soil		—	0	0	0	24	"	
#64 6-11	18	PERM PASTURE TREES BEING						23	SULLIVAN	
6-29	"	"							"	
7-18	"	PERM PASTURE							"	
8-6	"	"							"	
8-22	"	"							"	
9-E	"	"							"	
9-24	"	"							"	

6-15-73

ASCS SUPPORT FOR CROP ID TECHNOLOGY ASSESSMENT

BY FIELD SUMMARY OF GROUND OBSERVATIONS

County LEE Township 20N Range 9E Section 11 Field 65 + 66

Date 1	Acres est. 2	Crop 3	Height 4	Stage of Maturity 5	Row		Ground Cover 8	Observations 9	Observer 10	JSC Comments 11
					Dir. 6	Width 7				
#65 6-11	34	CORN	UNDER 6"	PREFASSEL	2	38"	0	0	SULLIVAN	
6-29	"	"	18"	"	2	"	1		"	
7-18	"	"	60"	"	2	38	4		"	
8-6	"	"	96"	TASSELED	2	38	4	0	"	
8-22	"	"	90"	"	2	38	4	APHID	"	
9-E	"	"	90"	2	2	38	4		"	
9-27	"	"	90	3	2	38	4	0	"	
#66 6-11	78	CORN	UNDER 6"	PREFASSEL	2	40"	0	Not up yet	SULLIVAN	
6-29	"	"	12"	"	"	40	"		"	
7-18	"	"	42"	"	2	40	3		"	
8-6	"	"	90"	TASSELED	2	40	4	0	"	
8-22	"	"	102	"	2	40	4	0	"	
9-E	"	"	102	2	2	40	4		"	
9-27	"	"	102	3	2	40	4	0	"	

6-15-73

CROP ID TECHNOLOGY ASSESSMENT
IDENTIFICATION SUMMARY

CITARS # 6-12
15

County LEE Township 20N Range 9E Section 15

Field No.	Crop	Crop ID Data			Row		Area (acres)			Comments
		Conf	Date	Source	Dir.	Width	Est.	Meas.	Analyst	
21	CORN							76		6" 6-11
22	SOYA							52		6" 6-29
23	WHEAT							26		Harvested after 6-29
	followed by									Bare soil 7-18
	SOYBEANS									6" 8-6
24	Building S.H.							1		

6-15-73

ASCS SUPPORT FOR CROP ID TECHNOLOGY ASSESSMENT

BY FIELD SUMMARY OF GROUND OBSERVATIONS #6-12

County LIEETownship 20 NRange 9 ESection 15Field 21 + 22

Date 1	Acres est. 2	Crop 3	Height 4	Stage of Maturity 5	Row		Ground Cover 8	Observations 9	Observer 10	JSC Comments 11
					Dir. 6	Width 7				
#21 6-11	76	COEN	6"	PRE-TASSEL	1	30"	0	0	SULLIVAN	
6-29	"	"	30"	"	"	30'	3		"	
7-18	"	"	84"	TASSELING		"	4		"	
8-6	"	"	96"	"	1	30		0	"	
8-22	"	"	96"	"	1	30	4	Partially Aphed	"	
9-E	"	"	96"	3	1	30	4		"	
9-27	"	"	96"	3	1	30	4	0	"	
#22 6-11	58	Sogas	N 0+ UP	Prebloom	1	30'	0	0	SULLIVAN	
6-29	"	"	6"	"	"	30"	"		"	
7-18	"	"	24	BLOOMING	1	30"	3		"	
8-6	"	"	30"	EARLY Red SET	1	30'		0	"	
8-22	"	Soybeans	36"	LATE Red SET	1	30	4	37	"	
9-E	"	"	36"	5	1	30	4		"	
9-27	"	Soga	6	36	1	30	3	24	"	

6-15-73

ASCS SUPPORT FOR CROP ID TECHNOLOGY ASSESSMENT

42

BY FIELD SUMMARY OF GROUND OBSERVATIONS

County LEE Township 20N Range 9E Section 15 Field 23+24

Date 1	Acres est. 2	Crop 3	Height 4	Stage of Maturity 5	R o w		Ground Cover 8	Observations 9	Observer 10	JSC Comments 11
					Dir. 6	Width 7				
#23 6-11	26	WHEAT	36"	HEADED	1	7"	4	0	SULLIVAN	
6-29	"	"	"	Turning	1	7"	4		"	
7-18	"	BARE GROUND					0		"	
8-6	"	Soyas	6"	Prebloom	1	30"	0	(5)	"	
8-22	"	Soybeans	6"	Blooming	1	30	1	0	"	
9-E	"	"	18	4	1	30	2		"	
9-24	"	Soyas	4	18	1	30	2	0	"	
#24 6-11	1	Bldg. Site						0	SULLIVAN	
6-29	"	"							"	
7-18	1	"							"	
8-6	"	"							"	
8-22	"	Bldg. Site							"	
9-E	"	"							"	
9-24	"	"							"	

CROP ID TECHNOLOGY ASSESSMENT
IDENTIFICATION SUMMARY

CITARS # 6.54

County LEE

Township 20N Range 9E

Section 25

Field No.	Crop	Crop ID Data			R o w		Area (acres)			Comments	
		Conf.	Date	Source	Dir.	Width	Est.	Meas.	Analyst		
61	SOYA						12			<6" 6-30	
62	SOYA						18			<6" 6-30	
63	Oats						11			Harvested after 7-19	
	Stubble with regrowth										
64	CORN						2			12" 6-30	
65	CORN						16			12" 6-30	
66	Building Site						2				
67	Waterway with trees & brush						5				
68	CORN						24			18" 6-30	
69	Hay	being grazed					13				
70	Hay	being grazed					13				
71	Hay	being grazed					13				
72	SOYA						8			<6" 6-30	
73	CORN						85			6" 6-11	

6-15-73

 ASCS SUPPORT FOR CROP ID TECHNOLOGY ASSESSMENT
 BY FIELD SUMMARY OF GROUND OBSERVATIONS #6-54

44

 County LEE Township 20N Range 9E Section 25 Field 61 + 62

Date	Acres est.	Crop	Height	Stage of Maturity	Row		Ground Cover	Observations	Observer	JSC Comments
					Dir.	Width				
1	2	3	4	5	6	7	8	9	10	11
#61 6-11	12	CROP RESIDUE	7pcn	42				43	SULLIVAN	
6-30	"	Soybeans	Less than 6"	Preblossom	1	30"	0	Weedy	"	
7-19	"	"	12	"	1	30"	2	"	"	
8-6	"	Soyas	18'	Blooming	1	30"	2	0	"	
8-24	"	"	30'	Late Pod Set	1	30"	3	0	"	
9-E	"	"	30	4	1	30	4	Weedy	"	
9-27	"	"	30	6	1	30	4	24, 32	"	
#62 6-11	18	Freshly PLOWED + DISKED						1	SULLIVAN	
6-30	"	Soybeans	Less than 6"	Preblossom	1	30"	0	Weedy	"	
7-19	"	"	12	"	1	"	2	"	"	
8-6	"	Soyas	"	"	1	30	2	0	"	
8-24	"	"	30"	Late Pod Set	1	30	3	0	"	
9-E	"	"	30"	4	1	30	4	Weedy	"	
9-27	"	"	30	6	1	30	4	24, 32	"	

6-15-73

ASCS SUPPORT FOR CROP ID TECHNOLOGY ASSESSMENT

BY FIELD SUMMARY OF GROUND OBSERVATIONS

County LEE Township 20N Range 9E Section 25 Field 63+64

Date 1	Acres est. 2	Crop 3	Height 4	Stage of Maturity 5	Row		Ground Cover 8	Observations 9	Observer 10	JSC Comments 11
					Dir. 6	Width 7				
#63 6-11	11	OATS	12"	Root	1	6"	4	0	SULLIVAN	
6-30	"	"	24"	Headed	0		4		"	
7-19	11	"	30"		0		4	Ripened	"	
8-6	"	"	HARVESTED		1	6"	4	0	"	
8-24	11	"	12	—	0	0	4	21	"	
9-E	11	"	18"		0	0	4	6	"	
9-24	11	"	18"	—	0	0	4	6	"	
#64 6-11	2	CORN	Not up	PRETASSEL	1	30'	0	0	SULLIVAN	
6-30	2	"	12"	"	"	"	2	VERY Thin	"	
7-19	"	"	42	"	1	30	1	Very Uneven	"	
8-6	"	"	84	TASSELED	1	30	4		"	
8-24	2	"	96'	"	1	30	4	0	"	
9-E	2	"	96"	2	1	30	4		"	
9-27	2	"	96	3	1	30	4	0	"	

6-15-73

ASCS SUPPORT FOR CROP ID TECHNOLOGY ASSESSMENT

46

BY FIELD SUMMARY OF GROUND OBSERVATIONS

County LEE Township 20N Range 9E Section 25 Field 65 + 66

Date	Acres est.	Crop	Height	Stage of Maturity	Row		Ground Cover	Observations	Observer	JSC Comments
					Dir.	Width				
1	2	3	4	5	6	7	8	9	10	11
#65 6-11	16	CORN	Not up	PRETASSEL	1	30"	0	0	SULLIVAN	
6-30	"	"	12'	"	1	"	2		"	
7-19	"	"	48'	"	1	30'	3		"	
8-6	"	"	84	"	1	30	4	UNEYEN	"	
8-24	"	"	96"	TASSELED	1	30	4	Aphids	"	
9-E	"	"	96	2	1	30	4		"	
9-27	"	"	96	3	1	30	4	0	"	
#66 6-11	2	Bldg. Site						0	SULLIVAN	
6-30		"							"	
7-19		"							"	
8-6	2	"							"	
8-24	"	"							"	
9-E	"	"							"	
9-27	"	"							"	

6-15-73

ASCS SUPPORT FOR CROP ID TECHNOLOGY ASSESSMENT

BY FIELD SUMMARY OF GROUND OBSERVATIONS

County LEE Township 20N Range 9E Section 25 Field 67 + 68

Date 1	Acres est. 2	Crop 3	Height 4	Stage of Maturity 5	Row		Ground Cover 8	Observations 9	Observer 10	JSC Comments 11
					Dir. 6	Width 7				
#67 6-11	5	Waterway Filled with		Trees + Brush				0	SULLIVAN	
6-30		"							"	
7-19		"							"	
8-6	5	"							"	
8-24	"	"							"	
9-E	"	"							"	
9-27	"	"							"	
#68 6-11	24	Corn	Not Up	PRETASSEL	2	30'	0	0	SULLIVAN	
6-30	"	"	18"	"	"	"	1	Very Poor Stand	"	
7-19	"	"	48"	"	2	30'	3		"	
8-6	"	"	90'	TASSELED	2	30	4	0	"	
8-24	"	"	90"	"	2	30	4	APHIDS	"	
9-E	"	"	90	2	2	30	4		"	
9-27	"	"	90	3	2	30	4	0	"	

47

6-15-73

48

ASCS SUPPORT FOR CROP ID TECHNOLOGY ASSESSMENT

BY FIELD SUMMARY OF GROUND OBSERVATIONS

County LEE Township 20N Range 9E Section 25 Field 69 + 70

Date 1	Acres est. 2	Crop 3	Height 4	Stage of Maturity 5	R o w		Ground Cover 8	Observations 9	Observer 10	JSC Comments 11
					Dir. 6	Width 7				
#69 6-11	13	SEEDING	18"	Regrowth	0	0	4	Rotating Field 29, 71, 70 for Pasture	SULLIVAN	
6-30	"	"	12"	Being Grazed	"	"	4		"	
7-19	"	"	18"	—	0	0	4		"	
8-6	"	"			0	0	4	0	"	
8-24	"	"	12"	—	0	0	4	6, 23	"	
9-E	"	"	12"		0	0	4	23 - 6	"	
9-27	"	"	6	—	0	0	4	6, 23	"	
#70 6-11	13	SEEDING	12-18	BEING Pastured	0	0	4	Rotating Field 20, 26, 69 for Pasture	Sullivan	
6-30	"	"	"	" "	"	"	4	"	"	
7-19	"	"	18"	—	0	0	4		"	
8-6	"	"			0	0	4	0	"	
8-24	"	"	12"	—	0	0	4	6, 23	"	
9-E	"	"	12		0	0	4	23 - 6	"	
9-27	"	"	6	—	0	0	4	6, 23	"	

6-15-13

ASCS SUPPORT FOR CROP ID TECHNOLOGY ASSESSMENT

BY FIELD SUMMARY OF GROUND OBSERVATIONS

County LEE Township 20N Range 9E Section 25 Field 71 + 72

Date 1	Acres est. 2	Crop 3	Height 4	Stage of Maturity 5	Row		Ground Cover 8	Observations 9	Observer 10	JSC Comments 11
					Dir. 6	Width 7				
#71 6-11	13	SEEDING	24-30		0	0	4	0	SULLIVAN	
6-30	"	"	18	"	"	"	4		"	
7-19	"	"	18"	—	0	0	4	GRAZING	"	
8-6	"	"			0	0	4	0	"	
8-24	"	"	12"	—	0	0	4	6, 23	"	
9-E	"	"	12		0	0	4	23-6	"	
9-27	"	"	6	—	0	0	4	6, 23	"	
#72 6-11	8	SEEDING	30"		0	0	4	11	SULLIVAN	
6-30	"	Soybeans	less than 6"	Prebloom	2	30"	0		"	
7-19	"	"	6"	"	2	30"	1		"	
8-6	"	Soya	30"	Blooming	2	30	3	0	"	
8-24	"	"	36	Late Pod Set	2	30	4	0	"	
9-E	"	"	36	4	2	30	4	32	"	
9-27	"	"	36	5	2	30	4	32	"	

6-15-73

ASCS SUPPORT FOR CROP ID TECHNOLOGY ASSESSMENT

50

BY FIELD SUMMARY OF GROUND OBSERVATIONS

County LEE Township 20N Range 9E Section 25 Field 73

Date 1	Acres est. 2	Crop 3	Height 4	Stage of Maturity 5	R o w		Ground Cover 8	Observations 9	Observer 10	JSC Comments 11
					Dir. 6	Width 7				
#73 6-11	85	corn	6"		1	30'	0	0	SULLIVAN	
6-30	"	"	46"	Pre-tassel	1	30"	4		"	
7-19	"	"	96"	Shooting TASSEL	1	30"	4		"	
8-6	85	"	102"	TASSELED	1	30"	4	0	"	
8-24	"	"	102"	"	1	30"	4	Aphids	"	
9-E	85	"	102"	3	1	30"	4		"	
9-24	85	"	102"	3	1	30"	4	0	"	

6-15-73

51

CROP ID TECHNOLOGY ASSESSMENT
IDENTIFICATION SUMMARY

CITARS # 6-92

County LEE

Township 20 N Range 10 E Section 17

Field No.	Crop	Crop ID Data			Row		Area (acres)			Comments
		Conf.	Date	Source	Dir.	Width	Est.	Meas.	Analyst	
61	Buildings						2			
62	Pasture						3			
63	CORN						14			<6" 6-11
64	CORN						45			<6" 6-11
65	SOYA						8			6" 6-30
66	SOYA						18			6" 6-30
67	SOYA						50			6" 6-30

6-15-73

 ASCS SUPPORT FOR CROP ID TECHNOLOGY ASSESSMENT
 BY FIELD SUMMARY OF GROUND OBSERVATIONS #6-92

52

 County LEE Township 20 N Range 10 E Section 17 Field 61 + 62

Date	Acres est.	Crop	Height	Stage of Maturity	Row		Ground Cover	Observations	Observer	JSC Comments
					Dir.	Width				
1	2	3	4	5	6	7	8	9	10	11
#61 6-11	2	Bldgs.							SULLIVAN	
6-30	"	"							"	
7-18	"	"							"	
8-6	"	"							"	
8-24	"	"							"	
9-E	"	"							"	
9-24	"	"							"	
#62 6-11	3	Perm. Pasture Being GROWED	Under 6				4	23	SULLIVAN	
6-30	"	"							"	
7-18	"	"							"	
8-6	"	"							"	
8-24	"	"							"	
9-E	"	"							"	
9-24	"	"							"	

6-15-73

ASCS SUPPORT FOR CROP ID TECHNOLOGY ASSESSMENT
BY FIELD SUMMARY OF GROUND OBSERVATIONS

County LFE Township 20N Range 10E Section 17 Field 63 & 64

Date 1	Acres est. 2	Crop 3	Height 4	Stage of Maturity 5	Row		Ground Cover 8	Observations 9	Observer 10	JSC Comments 11
					Dir. 6	Width 7				
#63 6-11	14	Corn	Under 6"	PRETASSEL	2	38"	0	0	SULLIVAN	
6-30	"	"	24'	"	2	"	2	Very Uneven	"	
7-18	"	"	72'	PRETASSEL		2	38	- 4	"	
8-6	"	"	102'	TASSELED	2	38	4	0	"	
8-24	"	"	102'	"	2	38"	4	Aphid. S.	"	
9-E	"	"	102'	2	2	38"	4		"	
9-27	"	"	102	3	2	38	4	0	"	
#64 6-11	45	Corn	Under 6"	PRETASSEL	1	38"	0	0	SULLIVAN	
6-30	"	"	18"	"	"	"	2	Very Uneven	"	
7-18	"	"	60'	"		1	38	- 4	"	
8-6	"	"	108'	TASSELED	1	38	4	0	"	
8-24	"	"	108'	"	1	38"	4	"	"	
9-E	"	"	108	2	1	38	4		"	
9-27	"	"	108	3	1	38	4	0	"	

6-15-73

54

ASCS SUPPORT FOR CROP ID TECHNOLOGY ASSESSMENT
BY FIELD SUMMARY OF GROUND OBSERVATIONS

County LEE Township 20 N Range 10 E Section 17 Field 65 + 66

Date 1	Acres est. 2	Crop 3	Height 4	Stage of Maturity 5	Row		Ground Cover 8	Observations 9	Observer 10	JSC Comments 11
					Dir. 6	Width 7				
#65 6-11	8	Soyas	UNDER 6"	Prebloom	1	38"	0	1 NOT up yet	SULLIVAN	
6-30	"	"	6"	"	"	"	"		"	
7-18	8	"	12	Blooming		1	38	-2	"	
8-6	"	"	36"	EARLY Pod Set	1	38	3	0	"	
8-24	"	"	36"	LATE Pod	1	38	3	34	"	
9-E	"	"	36	4	1	38	4		"	
9-27	"	"	36	6	1	38	4	24, weedy	"	
#66 6-11	18	Soyas	UNDER 6"	Prebloom	2	38"	0	1 Not up	SULLIVAN	
6-30	"	"	6"	"	"	"	"		"	
7-18	"	"	12	Blooming		2	38	-2	"	
8-6	"	"	36"	EARLY Pod Set	2	38	3	0	"	
8-24	"	"	36"	"	2	38"	3	"	"	
9-E	"	"	36"	4	2	38	4		"	
9-27	"	"	36	6	2	38	4	24	"	

6-15-73

ASCS SUPPORT FOR CROP ID TECHNOLOGY ASSESSMENT

BY FIELD SUMMARY OF GROUND OBSERVATIONS

County LEE Township 20N Range 10E Section 17 Field 67

Date 1	Acres est. 2	Crop 3	Height 4	Stage of Maturity 5	Row		Ground Cover 8	Observations 9	Observer 10	JSC Comments 11
					Dir. 6	Width 7				
# 67 6-11	50	Soyes	UNDER 6"	Prebloom	1	38"	0	1 Not up	Sullivan	
6-30	"	"	6"	"	"	"	"		"	
7-18	"	"	12"	"		1	38	- 2	"	
8-6	"	"	36"	EARLY Pod Set	1	38	3	0	"	
8-24	"	"	36"	LATE Pod	1	38	3	"	"	
9-1	"	"	36"	4	1	38	4		"	
9-24	"	"	36"	6	1	38	4	2 4	"	

55

6-15-73

CROP ID TECHNOLOGY ASSESSMENT
IDENTIFICATION SUMMARY

CITARS #6-72

County LEETownship 20N Range 10E Section 18

Field No.	Crop	Crop ID Data			Row		Area (acres)			Comments
		Conf	Date	Source	Dir.	Width	Est.	Meas.	Analyst	
61	CORN						8			6" 6-11
62	Waterway with trees						8			
63	CORN						12			<6" 6-11 36" 6-30
64	SOYA						30			6" 6-30
65	WHEAT						10			Harvested after 6-30 Tilled $\frac{1}{2}$ bare after 8-24
66	trees						2			
67	CORN						58			6" 6-11
68	SOYA						20			<6" 6-11
69	SOYA						5			
	#69 first reported 7-18. It is along the north side of field 63. SOYBEANS were 24" high at first report - same as in field 68 on that date.									

6-15-73

ASCS SUPPORT FOR CROP ID TECHNOLOGY ASSESSMENT

BY FIELD SUMMARY OF GROUND OBSERVATIONS #6-72

County LEETownship 20 NRange 10 ESection 18Field 61 + 62

Date 1	Acres est. 2	Crop 3	Height 4	Stage of Maturity 5	Row		Ground Cover 8	Observations 9	Observer 10	JSC Comments 11
					Dir. 6	Width 7				
#61 6-11	8	Corn	6"	PRE-TASSEL	2	36"	0	0	SULLIVAN	
6-30	"	"	36"	"	"	"			"	
7-18	"	"	84"	"	2	36	4		"	
8-16	"	"	96"	TASSELLED	2	36	4	0	"	
8-24	"	"	96"	"	2	36	4	RPHIDS	"	
9-E	"	"	96	3	2	36	4		"	
9-27	"	"	96	3	2	36	4	0	"	
#62 6-11	8	TREES - NON CROP - W. WAY					4	0	SULLIVAN	
6-30	"	"	"	"	"	"			"	
7-18	"	"	"	"	"	"			"	
8-16	"	"							"	
8-24	"	"							"	
9-E	"	"							"	
9-27	"	"							"	

6-10 13

ASCS SUPPORT FOR CROP ID TECHNOLOGY ASSESSMENT

58

BY FIELD SUMMARY OF GROUND OBSERVATIONS

County LEE Township 20 N Range 10 E Section 18 Field 63 + 64

Date 1	Acres est. 2	Crop 3	Height 4	Stage of Maturity 5	R o w		Ground Cover 8	Observations 9	Observer 10	JSC Comments 11
					Dir. 6	Width 7				
#63 6-11	12	BEANS	UNDER 6	Prebloom	2	36"	0	0	SULLIVAN	
6-30	"	Corn	36"	Pretassel	2	36	3		"	
7-18	"	"	60	"	2	36	4		"	
8-16	"	"	42	EARLY Pod Set	2	36	4	0	"	
8-24	"	Soya	42	TASSELED	2	36	3	37	"	
9-5	"	Corn	96	3	2	36	4		"	
9-27	"	"	96	3	2	36	4	0	"	
#64 6-11	30	BEANS	UNDER 6	Prebloom	2	38"	0	NOT UP YET	SULLIVAN	
6-30	"	Soya	6"	"	"	"	0		"	
7-18	"	"	18"	Prebloom	2	38"	2		"	
8-16	"	"	42"	EARLY Pod Set	2	38"	3	0	"	
8-24	"	"	42"	LATE Pod Set	2	38	3	37	"	
9-5	"	"	49"	4	2	38	4		"	
9-27	"	"	42		2	38	3		"	

6-15-73

ASCS SUPPORT FOR CROP ID TECHNOLOGY ASSESSMENT

BY FIELD SUMMARY OF GROUND OBSERVATIONS

County LEE Township 20N Range 10E Section 18 Field 65 + 66

Date 1	Acres est. 2	Crop 3	Height 4	Stage of Maturity 5	Row		Ground Cover 8	Observations 9	Observer 10	JSC Comments 11
					Dir. 6	Width 7				
#65 6-11	10	WHEAT	36"	HEADED	0	0	4	0	SULLIVAN	
6-30	"	"	"	Turning	"	"	"	Uneven	"	
7-18	"	"	18"		0		4	HARVESTED	"	
8-16	"	"	Combined		0	0	4	0	"	
8-24	"	"	—	—	0	0	—	21	"	
9-E	"	"	—	27	0	0	0	27	"	
9-27	"	"	—	27	0	0	0	27	"	
#66 6-11	2	TREES + NO CROP					4	0	SULLIVAN	
6-30	"	" "							"	
7-18	"	" "							"	
8-16	"	TREES							"	
8-24	"	"							"	
9-E	"	"							"	
9-27	"	"							"	

59

6-15-73

60

ASCS SUPPORT FOR CROP ID TECHNOLOGY ASSESSMENT

BY FIELD SUMMARY OF GROUND OBSERVATIONS

County LEE Township 20N Range 10E Section 18 Field 67 + 68

Date	Acres est.	Crop	Height	Stage of Maturity	Row		Ground Cover	Observations	Observer	JSC Comments
					Dir.	Width				
1	2	3	4	5	6	7	8	9	10	11
#67 6-11	58	Corn	6"	PRETASSEL	2	36	0	0	SULLIVAN	
6-30	"	"	36"	"	2	36	3		"	
7-18	"	"	78"	TASSELING	2	36	4		"	
8-16	"	"	96"	TASSELED	2	36	4	0	"	
8-24	"	"	96"	"	2	36		Aphids	"	
9-E	"	"	96"	3	2	36	4		"	
9-24	"	"	96"	3	2	36	4	0	"	
#68 6-11	20	BEANS	UNDER 6"	PREBLOOM	2	36	0	0	SULLIVAN	
6-30	"	Soy	"	"	"	"	0		"	
7-18	"	"	24"	Blooming	2	36	2		"	
8-16	"	"	42"	EARLY Pod Set	2	36	3	0	"	
8-24	"	"	42"	LATE Pod Set	2	36	3	37	"	
9-E	"	"	42"	5	2	36	4		"	
9-24	"	"	42"	6	2	36	3	24	"	

6-15-73

ASCS SUPPORT FOR CROP ID TECHNOLOGY ASSESSMENT
BY FIELD SUMMARY OF GROUND OBSERVATIONS

County LEE Township 20N Range 10E Section 18 Field 69

#69

Date 1	Acres est. 2	Crop 3	Height 4	Stage of Maturity 5	Row		Ground Cover 8	Observations 9	Observer 10	JSC Comments 11
					Dir. 6	Width 7				
7-18	5	Soya	24	Blooming	2	36	2	Missed this field before	LETTMAN	
8-16	"	"	42"	EARLY Pod Set	2	36	3	0	"	
8-24	"	"	42"	LATE Pod Set	2	36	3	34	"	
9-1	"	"	42"	4	2	36"	4	32	"	
9-27	"	"	42	6	2	36	3	24	"	

69

6-15-73

CROP ID TECHNOLOGY ASSESSMENT
IDENTIFICATION SUMMARY

CITARS 6-5

County LEE

Township 21N

Range 9E

Section 10

Field No.	Crop	Crop ID Data			Row		Area (acres)			Comments
		Conf.	Date	Source	Dir.	Width	Est.	Meas.	Analyst	
41	Soya						15			6" 6-29
42	Borrow Pit						3			
43	CORN						3			12" 6-12
44	Building site						2			
45	Building site						4			
46	Hay						12			
47	Pasture & buildings						5			
48	Oats						10			Harvested after 7-18
49	Clover-Timothy						18			grazing
50	CORN						30			<6" 6-12
51	SOYA						14			6" 6-29
52	Oats						14			Harvested after 7-18
53	Pasture						2			
54	SOYA						13			Hay on 6-12
										Bare 6-29
										6" Beans 7-18

6-15-73

ASCS SUPPORT FOR CROP ID TECHNOLOGY ASSESSMENT

BY FIELD SUMMARY OF GROUND OBSERVATIONS

#65

County LEETownship 21 NRange 9 ESection 10Field 41 + 42

Date 1	Acres est. 2	Crop 3	Height 4	Stage of Maturity 5	Row		Ground Cover 8	Observations 9	Observer 10	JSC Comments 11
					Dir. 6	Width 7				
#41 6-12	15	NOT PLANTED						1	SULLIVAN	
6-29	"	Soga	6"	Preblossom		38	0		"	
7-18	"	"	18"	BLOOMING		38	2		"	
8-6	"	"	36"	EARLY Pod	1	38	3	0	"	
8-22	"	"	42'	LATE Pod SET			4	37	"	
9-E	"	"	42'	5	1	38'	4		"	
9-28	"	"	42	6	1	38"	4?	0	"	
#42 6-12	3	BORROW Pit (Empty WATER)							SULLIVAN	
6-29		Borrow Pit							"	
7-18	"	"							"	
8-6	3	"							"	
8-22	3	"							"	
9-E	3	"							"	
9-28	3	"							"	

63

6-15-73

64

ASCS SUPPORT FOR CROP ID TECHNOLOGY ASSESSMENT
BY FIELD SUMMARY OF GROUND OBSERVATIONS

County LEE Township 21N Range 9E Section 10 Field 43 + 44

Date 1	Acres est. 2	Crop 3	Height 4	Stage of Maturity 5	Row		Ground Cover 8	Observations 9	Observer 10	JSC Comments 11
					Dir. 6	Width 7				
#43 6-12	3	CORN	12"	PRETASSEL	3	38"	0	0	SULLIVAN	
6-29	3	"	40"	"	"	"	4	2	"	
7-18	3	"	96"	TASSEL	3	38	4		"	
8-6	3	"	96"	TASSELED	3	38		0	"	
8-22	3	"	102"	"	3	38	4	Aphid	"	
9-E	3	"	102"	3	3	38	4		"	
9-28	3	"	102"	3	3	38	4	0	"	
#44 6-12	2	Bldg. Site							Sullivan	
6-29		"							"	
7-18		"							"	
8-6	2	"							"	
8-22	"	"							"	
9-E	"	"							"	
9-28	2	"							"	

6-15-73

ASCS SUPPORT FOR CROP ID TECHNOLOGY ASSESSMENT
BY FIELD SUMMARY OF GROUND OBSERVATIONS

County LEE Township 21 N Range 9 E Section 10 Field 45 + 46

Date 1	Acres est. 2	Crop 3	Height 4	Stage of Maturity 5	Row		Ground Cover 8	Observations 9	Observer 10	JSC Comments 11
					Dir. 6	Width 7				
#45 6-12	4	BLdg. SITE							SULLIVAN	
6-29		"							"	
7-18									"	
8-6	4	BLdg. Site							"	
8-22	4	"							"	
9-E	4	"							"	
9-28	4	"							"	
#46 6-12	25	SEEDING	36"		0	-	4	0	SULLIVAN	
6-29	12	HAY	"		"	0	"	6	"	
7-18	12	"	12"	-	0		4	Regrowth	"	
8-6	12	Seeding	6"	Clipped	0	0		25	"	
8-22	"	"	12"		-	-	4	6	"	
9-E	"	"	18"		0	0	4	6	"	
9-28	"	"	18"	-	0	0	4	6	"	

6-15-73

99

ASCS SUPPORT FOR CROP ID TECHNOLOGY ASSESSMENT

BY FIELD SUMMARY OF GROUND OBSERVATIONS

County LEE Township 21 N Range 9 E Section 10 Field 47 + 48

Date 1	Acres est. 2	Crop 3	Height 4	Stage of Maturity 5	Row		Ground Cover 8	Observations 9	Observer 10	JSC Comments 11
					Dir. 6	Width 7				
#47 6-12	5	Bldg. Site PERM. PASTURE						23	SULLIVAN	
6-29		"							"	
7-18		"							"	
8-6	5	"							"	
8-29	"	"							"	
9-E	"	"							"	
9-28	5	"							"	
#48 6-12	10	DAIS	18"	BOOT	0	-	4	0	SULLIVAN	
6-29	"	"	36"	HEADED	0	0	"		"	
7-18	"	"	"	-	0		4	RIPE	"	
8-6	"	"			0	0		21	"	
8-29	"	"	6"		-	-	4	21	"	
9-E	"	"	6"		0	0	4	6	"	
9-28	"	"	6	-	0	0	4	23 (6)	"	

6-15-73

ASCS SUPPORT FOR CROP ID TECHNOLOGY ASSESSMENT
 BY FIELD SUMMARY OF GROUND OBSERVATIONS

County LEE Township 24N Range 9E Section 10 Field 49 + 50

Date 1	Acres est. 2	Crop 3	Height 4	Stage of Maturity 5	Row		Ground Cover 8	Observations 9	Observer 10	JSC Comments 11
					Dir. 6	Width 7				
#49 6-12	18	PASTURE CLOVER-TIM	12"					23	SULLIVAN	
6-29	"	HAY	"		0	0	4	"	"	
7-18	"	"	18"		0		4	GRAZING	"	
8-6	"	PASTURE		Being Grazed	0	0	4	23	"	
8-23	"	"	6"		-	-	4	23	"	
9-E	"	"	6"		0	0	4	23	"	
9-28	"	"	6"	-	0	0	4	23 (6)	"	
#50 6-12	30	CORN	UNDER 6"	PRETASSEL	2	40'	0	0	SULLIVAN	
6-29	"	"	30"	"	"	"	3		"	
7-18	"	"	78"	TASSELING	2	40	4		"	
8-6	"	"	90"	TASSELED	2	40	4	0	"	
8-23	"	"	96"	"	2	40	4	PART APLID	"	
9-E	"	"	96"	3	2	40	4		"	
9-28	"	"	96"	3	2	40	4	0	"	

6-15-73

68

ASCS SUPPORT FOR CROP ID TECHNOLOGY ASSESSMENT

BY FIELD SUMMARY OF GROUND OBSERVATIONS

County LEE Township 21 N Range 9 E Section 10 Field 51 + 52

Date 1	Acres est. 2	Crop 3	Height 4	Stage of Maturity 5	R o w		Ground Cover 8	Observations 9	Observer 10	JSC Comments 11
					Dir. 6	Width 7				
#51 6-12	14	Soyos	UNDER 6"	Prebloom	2	40"	0	NOT UP YET	SULLIVAN	
6-29	"	"	6	"	"	"	0	2	"	
7-18	"	"	12	Prebloom	2	40	2		"	
8-6	"	"	24	Blooming	2	40	3	0	"	
8-22	"	"	36"	LATE Pod SET	2	40	4	0	"	
9-E	"	"	36	4	2	40	4		"	
9-28	"	"	36	5 + 6	2	40	4	0	"	
#52 6-12	14	OATS	18"	Boot	0	-	4	0	SULLIVAN	
6-29	"	"	30"	Headed	0	0	4		"	
7-18		"	36"	—		4	4	RIPE	"	
8-6	"	"	HARV	ested	0	0	4	21	"	
8-22	"	"	6"		-	-	4	21	"	
9-E	"	"	12		0	0	4	6	"	
9-28	"	"	12	—	0	0	4	6	"	

6-15-73

ASCS SUPPORT FOR CROP ID TECHNOLOGY ASSESSMENT
BY FIELD SUMMARY OF GROUND OBSERVATIONS

County LEE Township 21N Range 9E Section 10 Field 53⁴⁵⁴

Date 1	Acres est. 2	Crop 3	Height 4	Stage of Maturity 5	Row		Ground Cover 8	Observations 9	Observer 10	JSC Comments 11
					Dir. 6	Width 7				
#53 6-12	2	PERM. PASTURE							SULLIVAN	
6-29	"	"							"	
7-18	"	"							"	
8-6	"	"							"	
8-22	"	"							"	
9-E	"	"							"	
9-28	"	"							"	
#54 6-29	13	BARE GROUND							Sullivan	
7-18	"	Soye	6"	Pre bloom	1	40"	1		"	
8-6	"	"	18"	Blooming	1	40"	2	0	"	
8-22	"	"	36"	LATE Rd. SET			4	0	"	
9-E	"	"	36	4	1	40	4		"	
9-28	"	"	36	5	1	40"	4	0	"	

69

6-15-73

CROP ID TECHNOLOGY ASSESSMENT
IDENTIFICATION SUMMARY

CITARS # 6-25

County LEE

Township 21N

Range 9E

Section 11

Field No.	Crop	Crop ID Data			Row		Area (acres)			Comments
		Conf	Date	Source	Dir.	Width	Est.	Meas.	Analyst	
61	Tollway under construction						10			
62	CORN						26			< 6" 6-12
63	CORN						11			6" 6-12
64	Pasture and buildings						15			
65	CORN						38			6" 6-12
66	CORN						26			6" 6-12
67	Pasture w/ brush, trees, waterway						25			
68	SOYA						52			< 6" 6-12
69	SOYA						9			Replanted before 6-29
										6" 7-18 This 9 ac.
										was originally part of # 68 (52+9=61 ac)

6-15-73

ASCS SUPPORT FOR CROP ID TECHNOLOGY ASSESSMENT
BY FIELD SUMMARY OF GROUND OBSERVATIONS

#6-25

County LEETownship R1NRange 9ESection 11Field 61 + 62

Date 1	Acres est. 2	Crop 3	Height 4	Stage of Maturity 5	R o w		Ground Cover 8	Observations 9	Observer 10	JSC Comments 11
					Dir. 6	Width 7				
#61 6-12	10	Tollway BEING CONSTRUCTED							SULLIVAN	
6-29	"	"							"	
7-18	"	"							"	
8-6	"	"							"	
8-22	"	"							"	
9-E	"	"							"	
9-20	"	"							"	
#62 6-12	26	CORN	UNDER 6"	PRETASSEL	3	40"	0	0	SULLIVAN	
6-29	"	"	12"	"	"	"	"		"	
7-18	"	"	30"	"	3	40	2		"	
8-6	"	"	90"	TASSELLED	3	40	4	0	"	
8-22	"	"	90"	"	3	40	4	1/2 with aphids	"	
9-E	"	"	90"	2	3	40"	4		"	
9-20	"	"	90"	3	3	40	4	0	"	

6-15-73

ASCS SUPPORT FOR CROP ID TECHNOLOGY ASSESSMENT
BY FIELD SUMMARY OF GROUND OBSERVATIONS

County LEE Township 21 N Range 9 E Section 11 Field 63 + 64

Date 1	Acres est. 2	Crop 3	Height 4	Stage of Maturity 5	Row		Ground Cover 8	Observations 9	Observer 10	JSC Comments 11
					Dir. 6	Width 7				
# 63 6-12	11	CORN	6"	PRETASSEL	3	40"	0	0	SULLIVAN	
6-29	"	"	12"	"	"	"	0		"	
7-18	"	"	30"	Pretassel	3	40	2		"	
8-6	"	"	90"	TASSELED	3	40	4	0	"	
8-22	"	"	90"	"	3	40	4	1/2 NITROPHOS	"	
9-E	"	"	90"	2	3	40"	4		"	
9-20	"	"	90	3	3	40	4	0	"	
# 64 6-12	15	PERM. PASTURE + Bldg. SITE						0	SULLIVAN	
6-29	"	"							"	
7-18	"	"							"	
8-6	"	"							"	
8-22	"	PERM PASTURE							"	
9-E	"	"							"	
9-20	"	"							"	

6-15-73

ASCS SUPPORT FOR CROP ID TECHNOLOGY ASSESSMENT

BY FIELD SUMMARY OF GROUND OBSERVATIONS

County LEE Township 24N Range 9E Section 11 Field 65+66

Date 1	Acres est. 2	Crop 3	Height 4	Stage of Maturity 5	Row		Ground Cover 8	Observations 9	Observer 10	JSC Comments 11
					Dir. 6	Width 7				
#65 6-12	38	CORN	6"	PRETASSEL	1	40'	0	0	SULLIVAN	
6-29	"	"	24"	"	"	"	2		"	
7-18	"	"	72"	"	1	40'	4	TASSELS Just Shooting	"	
8-6	"	"	90"	TASSELED	1	40	4		"	
8-22	"	"	90"	"	1	40	4	APHIDS	"	
9-E	"	"	90	3	1	40	4		"	
9-20	"	"	90	3	1	40	4	0	"	
#66 6-12	26	CORN	6"	PRETASSEL	1	38"	0	0	SULLIVAN	
6-29	"	"	18"	"	1	38	2		"	
7-18	"	"	60"		1	38	3		"	
8-6	"	"	90"	TASSELED	1	38	4	0	"	
8-22	"	"	90"	"	1	38	4	APHIDS	"	
9-E	"	"	90"	2	1	38	4		"	
9-20	"	"	90	3	1	38	4	0	"	

6-15-73

74

ASCS SUPPORT FOR CROP ID TECHNOLOGY ASSESSMENT
BY FIELD SUMMARY OF GROUND OBSERVATIONS

County LEE Township 21N Range 9E Section 11 Field 67 + 68

Date 1	Acres est. 2	Crop 3	Height 4	Stage of Maturity 5	R o w		Ground Cover 8	Observations 9	Observer 10	JSC Comments 11
					Dir. 6	Width 7				
#67 6-12	25	PERM. PASTURE Brush, Tree, Waterway							SULLIVAN	
6-29	"	"							"	
7-18	"	"							"	
8-6	"	"							"	
8-22	"	"							"	
9-E	"	"							"	
9-20	"	"							"	
#68 6-12	67	Soyas	UNDER 6"	Rebloom	3	38"	0	0	SULLIVAN	
6-29	"	"	6'	"	"	"		(9 acres) 5	"	
7-18	"	"	18"	"	3	38	2	Freshly Cultivated 9 acres about 6" - replanted	"	
8-6	52	"	30"	EARLY Pod	3	38	3	0	"	
8-22	"	"	36"	LATE Pod SET	3	38	4	37	"	
9-E	"	"	36	5	3	38	4		"	
9-20	"	"	36	6	3	38"	4	24	"	

6-15-73

ASCS SUPPORT FOR CROP ID TECHNOLOGY ASSESSMENT

BY FIELD SUMMARY OF GROUND OBSERVATIONS

County LEE Township 21N Range 9E Section 11 Field 69

#69

Date 1	Acres est. 2	Crop 3	Height 4	Stage of Maturity 5	R o w		Ground Cover 8	Observations 9	Observer 10	JSC Comments 11
					Dir. 6	Width 7				
8-6	9	Soyas	24"	Bloom	3	38	3	5	Sullivan	
8-22	"	"	30'	Late Pod Set	3	38	4	0	"	
9-5	"	"	36	4	3	38	4		"	
9-28	"	"	36	5	3	38	4	0	"	

6-15-73

CROP ID TECHNOLOGY ASSESSMENT
IDENTIFICATION SUMMARY

CITARS # 6-45

County LEE

Township 21N

Range 9E

Section 12

Field No.	Crop	Crop ID Data			Row		Area (acres)			Comments
		Conf.	Date	Source	Dir.	Width	Est.	Meas.	Analyst	
61	SOYA							50		Volunteer oats 6-11 Beans 6" 6-29
62	Pasture & buildings							8		
63	SOYA							80		6" 6-29

6-15-73

 ASCS SUPPORT FOR CROP ID TECHNOLOGY ASSESSMENT
 BY FIELD SUMMARY OF GROUND OBSERVATIONS

#6-45

County LEETownship 21 NRange 9 ESection 12Field 61 + 62

Date 1	Acres est. 2	Crop 3	Height 4	Stage of Maturity 5	Row		Ground Cover 8	Observations 9	Observer 10	JSC Comments 11
					Dir. 6	Width 7				
#61 6-11	58	OATS	6"	BOOT	0	0	4	4, 32	SULLIVAN	
6-29	"	Soga	"	prebloom	2	30	0		"	
7-18	"	"	12'	Prebloom	2	30	2		"	
8-6	"	BEANS	24"	BLOOM	2	30	3	0	"	
8-22	"	"	36"	LATE Pod Set	2	30	4	37	"	
9-E	"	"	36"	4	2	30	4		"	
9-28	"	"	36	6	2	30	4	32	"	
#62 6-11	8	PERM. PASTURE HOUSE LOT							SULLIVAN	
6-29	"	"							"	
7-18	"	"							"	
8-6	"	"							"	
8-22	"	"							"	
9-E	"	"							"	
9-28	"	"							"	

6-15-73

ASCS SUPPORT FOR CROP ID TECHNOLOGY ASSESSMENT

78

BY FIELD SUMMARY OF GROUND OBSERVATIONS

County LEE Township 21 N Range 9 E Section 12 Field 63

Date 1	Acres est. 2	Crop 3	Height 4	Stage of Maturity 5	Row		Ground Cover 8	Observations 9	Observer 10	JSC Comments 11
					Dir. 6	Width 7				
#63 6-11	80	Sogas	Under 6	Prebloom	2	30"	0	Not up	SULLIVAN	
6-29	"	"	"	"	2	30"	0	2	"	
4-18	"	"	24	Blooming	2	30"	3		"	
8-6	"	"	36	EARLY Pod Set	2	30	3	0	"	
8-22	"	"	36"	LATE Pod Set	2	30	4	34	"	
9-E	"	"	36	5	2	30	4		"	
9-28	"	Beans	36	5	2	30"	4	0	"	

CROP ID TECHNOLOGY ASSESSMENT
IDENTIFICATION SUMMARY

CITARS # 6-28

County LEE Township 21N Range 9E Section 26

Field No.	Crop	Crop ID Data			Row		Area (acres)			Comments
		Conf.	Date	Source	Dir.	Width	Est.	Meas.	Analyst	
01	Oats							10		Harvested after 8-6
02	CORN							30		6" 6-29
03	Hay							24		
04	SOYA							30		6" 6-29
05	CORN							90		12" 6-12
06	Buildings							3		
		Field #05 - several strips chopped for silage before 9-10								
		1/4 field - - - 9-28								

6-15-73

 ASCS SUPPORT FOR CROP ID TECHNOLOGY ASSESSMENT
 BY FIELD SUMMARY OF GROUND OBSERVATIONS

#6-28

80

 County LEE Township 24N Range 9E Section 26 Field 01 + 02

Date 1	Acres est. 2	Crop 3	Height 4	Stage of Maturity 5	R o w		Ground Cover 8	Observations 9	Observer 10	JSC Comments 11
					Dir. 6	Width 7				
#01 6-12	10	OATS	UNDER 6"	ROOT	0	-	4	0	LEFFELMAN	
6-29	"	"	12	"	"	0	4		"	
7-18	"	"	24	HEADED	0		4		"	
8-6	"	"	18"	Mature	0	0	4	0	"	
8-22	"	"	6	-	0	0	4	21	"	
9-E	"	"	12		0	0	4	6	"	
9-28	"	"	12	-	0	0	4	6	"	
#02 6-12	30	CORN	UNDER 6"	PRETASSEL	2	36"	0	NOT UP YET	LEFFELMAN	
6-29	"	"	6"	"	"	"	"		"	
7-18	"	"	36"	PRETASSEL	2	36"	3		"	
8-6	"	"	60"	TASSLING	2	36"	4	0	"	
8-22	"	"	96"	"	2	36	4		"	
9-E	"	"	96"	2	2	36	4		"	
9-28	"	"	96	3	2	36	4	0	"	

6-15-73

ASCS SUPPORT FOR CROP ID TECHNOLOGY ASSESSMENT
 BY FIELD SUMMARY OF GROUND OBSERVATIONS

County LEE Township 24N Range 9E Section 26 Field 03 + 04

Date 1	Acres est. 2	Crop 3	Height 4	Stage of Maturity 5	Row		Ground Cover 8	Observations 9	Observer 10	JSC Comments 11
					Dir. 6	Width 7				
#03 6-12	24	HAY	30"				4	32	LEFFLEMAN	
6-29	"	"	48"		0	0	4	Being Mowed	"	
7-18	"	"	6"	—	0			THIN STAND Regrowth	"	
8-6	"	"	12"	Regrowth	0	0	4	0	"	
8-22	"	"	6-18"		0	0	4	22 - 6	"	
9-E	"	"	12		0	0	4	6	"	
9-28	"	"	12	—	0	0	4	6	"	
#04 6-12	30	Sogas	UNDER 6	Prebloom	2	38"	0	Not up yet	LEFFLEMAN	
6-29	"	Soga	6"	"	2	"	0		"	
7-18	"	"	18"	BLOOMING	2	38"	2		"	
8-6	"	"	36"	Early Pod Set	2	38"	3	0	"	
8-22	"	"	36"	Late Pod Set	2	38"	4	37	"	
9-E	"	"	36"	5	2	38"	4		"	
9-28	"	"	36"	6	2	38"	4	32	"	

6-15-73

82

ASCS SUPPORT FOR CROP ID TECHNOLOGY ASSESSMENT

BY FIELD SUMMARY OF GROUND OBSERVATIONS

County LEE Township 21N Range 9E Section 26 Field 05+06

Date 1	Acres est. 2	Crop 3	Height 4	Stage of Maturity 5	Row		Ground Cover 8	Observations 9	Observer 10	JSC Comments 11
					Dir. 6	Width 7				
#05 6-12	90	CORN	12"	PRE-TASSEL	2	38"	0	0	LEY/LEMAN	
6-29	"	"	30"	"	"	"	3		"	
7-18	"	"	48"	"	2	38"	4		"	
8-6	"	"	102"	Tasseled	2	38"	4	0	"	
8-22	"	"	102"	"	2	38"	4	Aphid	"	
9-E	"	"	102"	3	2	38"	4	Several strip chopped for	"	
9-28	"	"	102"	3	2	38"	4	silage of 74(26) field	"	
#06 6-12	3	Bldg. Site							LEY/LEMAN	
6-29	"	"							"	
7-18	3	"							"	
8-6	3	"							"	
8-22	3	"							"	
9-E	3	"							"	
9-28	3	"							"	

CROP ID TECHNOLOGY ASSESSMENT

IDENTIFICATION SUMMARY

CITARS 6-49

County LEE

Township 21N

Range 9E

Section 36

Field No.	Crop	Crop ID Data			R o w		Area (acres)			Comments
		Conf	Date	Source	Dir.	Width	Est.	Meas.	Analyst	
61	CORN						19			6" 6-12
62	Buildings						3			
63	CORN						32			12" 6-12
64	HAY						31			
65	Buildings						2			
66	Hays						2			
67	CORN						38			46" 6-29
68	CORN						28			12" 6-12

6-15-73

 ASCS SUPPORT FOR CROP ID TECHNOLOGY ASSESSMENT
 BY FIELD SUMMARY OF GROUND OBSERVATIONS

#6-49

84

 County LEE Township 21 N Range 9 E Section 36 Field 61 + 62

Date	Acres est.	Crop	Height	Stage of Maturity	R o w		Ground Cover	Observations	Observer	JSC Comments
					Dir.	Width				
1	2	3	4	5	6	7	8	9	10	11
#61 6-12	19	CORN	6"	PRETASSEL	2	36"	0	0	SULLIVAN	
6-29	"	"	24"	"	"	"	3		"	
7-18	"	"	72"	SHOOTING TASSEL	2	36	4		"	
8-6	"	"	96"	TASSELLED	2	36	4	0	"	
8-22	"	"	96"	"	2	36	4	APPLIED	"	
9-E	"	"	96"	3	2	36	4		"	
9-28	"	"	96"	3	2	36	4	0	"	
#62 6-12	3	Bldgs						0	SULLIVAN	
6-29	3	"		-					"	
7-18	"	"							"	
8-6	3	Bldgs							"	
8-22	3	Bldg Site							"	
9-E	3	"							"	
9-28	3	"							"	

6-15-73

ASCS SUPPORT FOR CROP ID TECHNOLOGY ASSESSMENT

BY FIELD SUMMARY OF GROUND OBSERVATIONS

County LEE Township 21N Range 9E Section 36 Field 63 + 64

Date 1	Acres est. 2	Crop 3	Height 4	Stage of Maturity 5	Row		Ground Cover 8	Observations 9	Observer 10	JSC Comments 11
					Dir. 6	Width 7				
#63 6-12	32	CORN	12"	PRETASSEL	2	38"	0	0	SULLIVAN	
6-29	"	"	18"	"	"	"	3		"	
7-18	"	"	60"	Shooting TASSEL	2	38"	4		"	
8-6	"	"	90"	TASSELED	2	38"	4	0	"	
8-22	"	"	90"	"	2	38	4	Aphid	"	
9-E	"	"	90"	3	2	38	4		"	
9-28	"	"	90	3	2	38	4	26 (Few Rows on south side)	"	
#64 6-12	31	HAY	Under 6"		0	-		21	SULLIVAN	
6-29	"	"	12"	PRETASSEL	2	38	4		"	
7-18	31	"	"		0		4	Regrowth	"	
8-6	"	"	12"	Regrowth	0	0	4	0	"	
8-22	"	"	12"	—	0	0	4	6	"	
9-E	"	"	18		0	0	4		"	
9-28	"	"	18	—	0	0	4		"	

6-15-73

98

ASCS SUPPORT FOR CROP ID TECHNOLOGY ASSESSMENT
BY FIELD SUMMARY OF GROUND OBSERVATIONS

County LEE Township 21N Range 9E Section 36 Field 65 + 66

Date 1	Acres est. 2	Crop 3	Height 4	Stage of Maturity 5	R o w		Ground Cover 8	Observations 9	Observer 10	JSC Comments 11
					Dir. 6	Width 7				
#65 6-12	2	Bldgs			0	-		0	SULLIVAN	
6-29	"	"							"	
7-18	2	"							"	
8-6	2	"							"	
8-22	2	"							"	
9-E	2	"							"	
9-28	2	"							"	
#66 6-12	2	HAY	30		-	-	4	0	SULLIVAN	
6-29	"	"	24"		0	0	4	11	"	
7-18	"	"	6"	-	0			Regrowth	"	
8-6	"	"	18"	Regrowth	0	0	4	0	"	
8-22	"	"	18"	-	0	0	4	6	"	
9-E	"	"	Less than 6"		0	0	4	Recently Clipped	"	
9-28	"	"	6"	-	0	0	4	6	"	

6-15-73

ASCS SUPPORT FOR CROP ID TECHNOLOGY ASSESSMENT

BY FIELD SUMMARY OF GROUND OBSERVATIONS

County LEE Township 24 N Range 9 E Section 36 Field 67 + 68

Date 1	Acres est. 2	Crop 3	Height 4	Stage of Maturity 5	Row		Ground Cover 8	Observations 9	Observer 10	JSC Comments 11
					Dir. 6	Width 7				
#67 6-12	38	NOT PLANTED	-	-	-	-	0	1	SULLIVAN	
6-29	"	Corn	Less than 6"	Pretassel	2	38	0		"	
7-18	"	"	24	"	2	38	2		"	
8-6	"	"	84	"	2	38	4	0	"	
8-22	"	"	102"	TASSELED	2	38	4	0	"	
9-5	"	"	102	2	2	38	4		"	
9-28	"	"	102	3	2	38	4	0	"	
#68 6-12	28	CORN	12"	Pretassel	2	38"	0	0	SULLIVAN	
6-29	"	"		"	"	"	3	VERY UNEVEN	"	
7-18	"	"	78"	TASSELING	2	38	4		"	
8-6	"	"	96"	TASSELED	2	38	4	0	"	
8-22	"	"	96"	"	2	38	4	Aphed	"	
9-5	"	"	96	3	2	38"	4		"	
9-28	"	"	96	3	2	38"	4	part 5g Part 6, Part 26	"	

6-15-73

CROP ID TECHNOLOGY ASSESSMENT
IDENTIFICATION SUMMARY

CITARS # 6-85

County LEETownship 21N - Range 10E Section 8

Field No.	Crop	Crop ID Data			Row		Area (acres)			Comments
		Conf.	Date	Source	Dir.	Width	Est.	Meas.	Analyst	
21	SOYA						20			<6" 6-12
22	Hay			("newham")			20			
23	Hay			("old hay")			20			
24	SOYA						20			emerging 6-12
25	CORN						14			<6" 6-12
26	Waterway			and uncultivated			8			
27	SOYA						21			<6" 6-12
28	Hay						10			
29	SOYA						20			6" 7-18
30	SOYA						6			6" 7-18
	NOTE:	FIELD 30 was split from # 28 and first reported separately 8-6.								
		Field 29 was grossly modified before planting this year - After stockpiling topsoil, A hill was removed for use in adjacent fallow way - Then topsoil was replaced in E-W strips, and packed with big earth-moving machinery before cultivation (Note: resulting crop was small and exhibited uneven growth.)								

6-15-73

 ASCS SUPPORT FOR CROP ID TECHNOLOGY ASSESSMENT
 BY FIELD SUMMARY OF GROUND OBSERVATIONS

 County LEE Township 21 N Range 10 E Section 8 #6-85 Field 21 + 22

Date 1	Acres est. 2	Crop 3	Height 4	Stage of Maturity 5	Row		Ground Cover 8	Observations 9	Observer 10	JSC Comments 11
					Dir. 6	Width 7				
#21 6-12	20	BEANS	UNDER 6"	Prebloom	1	30"	0	0	SULLIVAN	
6-29	"	Soga	6"	"	"	"	0		"	
7-18	"	"	12"	BLOOMING	1	30	2		"	
8-6	"	"	30"	EARLY Pod Set	1	30	3	0	"	
8-22	"	"	36	LATE Pod Set	1	30	3	34	"	
9-E	"	"	36	5	1	30	4		"	
9-28	"	"	36	6	1	30	4	24	"	
#22 6-12	20	HAY	36"		0		4	NEW HAY (1)	SULLIVAN	
6-29	"	"	6"		0	0		6	"	
7-18	"	"	12"	-	0		4	REGROWTH	"	
8-6	"	"	6"	REGROWTH	0	0	4	0	"	
8-22	"	"	6	-	0	0	4	6	"	
9-E	"	"	18"		0	0	4	6	"	
9-28	"	"	6"	-	0	0	4	6	"	

6-15-73

90

ASCS SUPPORT FOR CROP ID TECHNOLOGY ASSESSMENT

BY FIELD SUMMARY OF GROUND OBSERVATIONS

County LEE Township 21 N Range 10 E Section 8 Field 23 + 24

Date 1	Acres est. 2	Crop 3	Height 4	Stage of Maturity 5	R o w		Ground Cover 8	Observations 9	Observer 10	JSC Comments 11
					Dir. 6	Width 7				
#23 6-12	20	HAY	30"				4	OLD HAY (1)	SULLIVAN	
6-29	"	"	6'			0	0	6	"	
7-18	"	"	12"	—		0		4	"	
8-6	"	HAY	6'	Regrowth		0	0	4	0	"
8-22	"	"	6	—		0	0	4	6	"
9-E	"	"	18"			0	0	4	6	"
9-28	"	"	6"	—		0	0	4	6	"
#24 6-12	20	BEANS	UNDER 6	Prebloom	4	30"	0	Just Coming Up	SULLIVAN	
6-29	"	SOYA	6"	"	"	"	"		"	
7-18	"	"	12"	Blooming	4	30	2		"	
8-6	"	"	30"	EARLY Pod Set	4	30	3	0	"	
8-22	"	"	36"	"	4	30	3	34	"	
9-E	"	"	36"	5	4	30	4		"	
9-28	"	"	36"	6	4	30	4	0	"	

6-15-73

ASCS SUPPORT FOR CROP ID TECHNOLOGY ASSESSMENT
BY FIELD SUMMARY OF GROUND OBSERVATIONS

County LEE Township 21N Range 10E Section 8 Field 25+26

Date 1	Acres est. 2	Crop 3	Height 4	Stage of Maturity 5	Row		Ground Cover 8	Observations 9	Observer 10	JSC Comments 11
					Dir. 6	Width 7				
#25 6-12	14	CORN	UNDER 6'	PRETASSLED	1	38"	0	0	SULLIVAN	
6-29	"	"	24	"	"	"	1		"	
7-18	"	"	60'	"	1	38	4		"	
8-6	"	"	96	TASSELED	1	38	4	0	"	
8-22	"	"	102	TASSELED	1	38	4	Aphids	"	
9-E	"	"	102	3	1	38	4		"	
9-28	"	"	102	3	1	38	4	0	"	
#26 6-12	8	Waterway & Waste Ground with Trees							SULLIVAN	
6-29	"	"							"	
7-18	"	Waterway							"	
8-6	"	"							"	
8-22	"	"							"	
9-E	"	"							"	
9-28	"	"							"	

6-15-73

 ASCS SUPPORT FOR CROP ID TECHNOLOGY ASSESSMENT
 BY FIELD SUMMARY OF GROUND OBSERVATIONS

92

 County LEE Township 21N Range 10E Section 8 Field 27+28

Date 1	Acres est. 2	Crop 3	Height 4	Stage of Maturity 5	Row		Ground Cover 8	Observations 9	Observer 10	JSC Comments 11
					Dir. 6	Width 7				
#27 6-12	2.1	Soybeans	UNDER 6	Pre bloom	1	38"	0	0	SULLIVAN	
6-29	"	"		"	1	"			"	
7-18	"	"	18"	"	1	38"	2		"	
8-6	"	"	30"	EARLY Pod Set	1	38	3	0	"	
8-22	"	"	42	LATE Pod Set	1	38	4	3.7	"	
9-E	"	"	42	5	1	38			"	
9-28	"	"	42	5	1	38	4	0	"	
#28 6-12	16	HAY				36"	4	0	SULLIVAN	
6-29	"	"	6"		0	0	4	2.5	"	
7-18	"	"	12"	—	0	0	4	REGROWTH	"	
8-6	10	"	18"	REGROWTH	0	0	4	0	"	
8-22	"	"	18"		0	0	4	6	"	
9-E	"	HAY	18		0	0	4	6	"	
9-28	"	"	6	—	0	0	4	6	"	

6-15-73

ASCS SUPPORT FOR CROP ID TECHNOLOGY ASSESSMENT
BY FIELD SUMMARY OF GROUND OBSERVATIONS

County LEE Township 24N Range 10E Section 8 Field 29+30

Date 1	Acres est. 2	Crop 3	Height 4	Stage of Maturity 5	Row		Ground Cover 8	Observations 9	Observer 10	JSC Comments 11
					Dir. 6	Width 7				
#29 6-12	20	BARE SOIL (2)							SULLIVAN	
6-29	"	Soya	-	Not up yet	1	38	0	1	"	
7-18	"	"	6	Prebloom	"	"	0		"	
8-6	"	"	12"	Blooming	1	38"	0	Freshly Cult (2)	"	
8-22	"	"	12-18	Late Pod Set	1	38"	1	UNEVEN	"	
9-E	"	"	12	4	1	38	4		"	
9-28	"	"	18	5	1	38	4	0	"	
#30 8-6	6	Soyas	24"	Blooming	1	38"	2	Freshly Cult (2)	Sullivan	
8-22	6	"	36	Late Pod Set	1	38	3	0	"	
9-E	6	"	36	4	1	38	2		"	
9-28	6	"	36	5	1	38	2	0	"	

6-15-73

CROP ID TECHNOLOGY ASSESSMENT
IDENTIFICATION SUMMARY

CITARS 6-86

County LEE

Township 21 N Range 10 E Section 17

Field No.	Crop	Crop ID Data			R o w		Area (acres)			Comments
		Conf.	Date	Source	Dir.	Width	Est.	Meas.	Analyst	
01	SOYA						20			6" 6-29
02	CORN (POPCORN)						20			12" 6-12
03	SOYA						17			<6" 7-18
04	SOYA						17			<6" 7-18
05	Building site						4			
06	SOYA						19			<6" 7-18
07	SOYA						66			<6" 7-18
08	Building Site						4			
09	SOYA						27			6" 6-29
10	CORN (Popcorn)						6			12" 6-12

6-15-73

 ASCS SUPPORT FOR CROP ID TECHNOLOGY ASSESSMENT
 BY FIELD SUMMARY OF GROUND OBSERVATIONS

#6-86

 County LEE Township 21 Range 10 E Section 17 Field 01 + 02

Date 1	Acres est. 2	Crop 3	Height 4	Stage of Maturity 5	Row		Ground Cover 8	Observations 9	Observer 10	JSC Comments 11
					Dir. 6	Width 7				
#01 6-12	20	? Not up but PLANTED			2	36"	0	1	SULLIVAN	
6-29	"	Soybean	6"	Preblossom	"	"	0		"	
7-18	"	"	24"	"	2	36"	2		"	
8-6	"	"	36"	Early Pod Set	2	36"	3	0	"	
8-22	"	"	42"	LATE Pod Set	2	36"	4	0	"	
9-E	"	"	42	4	2	36	4		"	
9-28	"	"	42	6	2	36	4	0	"	
#02 6-12	20	CORN	12"	PRETASSEL	2	36"	0	0	SULLIVAN	
6-29	"	"	36"	"	"	"	3		"	
7-18	"	"	72"	"	2	36	4		"	
8-6	"	"	102"	TASSELING	2	36	4	0	"	
8-22	"	Popcorn	102"	TASSELED	2	36"	4	APHIDS	"	
9-E	"	"	102	3	2	36	4		"	
9-28	"	Popcorn	102	3	2	36	4	0	"	

6-15-73

ASCS SUPPORT FOR CROP ID TECHNOLOGY ASSESSMENT

BY FIELD SUMMARY OF GROUND OBSERVATIONS

96

County LEE Township 21 Range 10E Section 17 Field 03+04

Date 1	Acres est. 2	Crop 3	Height 4	Stage of Maturity 5	Row		Ground Cover 8	Observations 9	Observer 10	JSC Comments 11
					Dir. 6	Width 7				
#03 6-12	17	WEEDS-(MUSTARD) RESIDUE FROM 1972						NOT DISKED	SULLIVAN	
6-29	"	Bare Soil							"	
7-18	"	Soya	Less than 6"	Prebloom	1	30	0		"	
8-6	"	"	6-15"		1		1	FIELD 3, 4, 6, 7	"	
8-22	"	"	24	LATE Pod Set	1	30"	3	0	"	
9-5	"	"	30	4	1	30	3		"	
9-28	"	"	30	5	1	30	4	0	"	
#04 6-12	17	BARE SOIL	36"	BLOOMING	-	-	4		SULLIVAN	
6-29	"	BARE SOIL + WEEDS							"	
7-18	"	Soya	Less than 6"	Prebloom	1	30	0		"	
8-6	"	"	6-15"		1		1	6 to 15" in height	"	
8-22	"	"	24	LATE Pod Set	1	30"	3	0	"	
9-5	"	"	30	4	1	30	3		"	
9-28	"	"	30	5	1	30	4	0	"	

6-15-73

ASCS SUPPORT FOR CROP ID TECHNOLOGY ASSESSMENT
BY FIELD SUMMARY OF GROUND OBSERVATIONS

County LEE Township 24 Range 10 E Section 17 Field 05 + 06

Date 1	Acres est. 2	Crop 3	Height 4	Stage of Maturity 5	Row		Ground Cover 8	Observations 9	Observer 10	JSC Comments 11
					Dir. 6	Width 7				
#05 6-12	4	BLdg SITE							SULLIVAN	
6-29	"	"							"	
7-18	4	"							"	
8-6	"	BLdg Site							"	
8-22	"	"							"	
9-E	"	"							"	
9-28	"	"							"	
#06 6-12	19	WEEDS ^{SAME AS 3+4}							SULLIVAN	
6-29	"	"							"	
7-18	"	Soya	Less than 6"	Prebloom	1	30	0	WEEDY	"	
8-6	"	"	6-15"					WEEDY Freshly cultivated	"	
8-22	"	"	24	LATE Pod Set	1	30	3	0	"	
9-E	"	"	30	4	1	30	3		"	
9-28	"	"	30	5	1	30	4	0	"	

6-15-73

86

ASCS SUPPORT FOR CROP ID TECHNOLOGY ASSESSMENT
BY FIELD SUMMARY OF GROUND OBSERVATIONS

County LEE Township 24 Range 10E Section 17 Field 07+08

Date 1	Acres est. 2	Crop 3	Height 4	Stage of Maturity 5	Row		Ground Cover 8	Observations 9	Observer 10	JSC Comments 11
					Dir. 6	Width 7				
#07 6-12	6.6	WEEDS							SULLIVAN	
6-29	"	25 Acres Plowed + Weeds							"	
7-18	"	Soya	Less than 6"	Prebloom	1	30	0		"	
8-6	"	"	6-15"		1		1		"	
8-22	"	"	24	Late Pod Set	1	30"	3	0	"	
9-5	"	"	30	4	1	30	3		"	
9-28	"	"	30	5	1	30	4	0	"	
#08 6-12	4	BLDG. SITE							SULLIVAN	
6-29	"	"							"	
7-18	4	"							"	
8-6	4	"							"	
8-22	4	"							"	
9-5	4	"							"	
9-28	4	"							"	

6-15-73

ASCS SUPPORT FOR CROP ID TECHNOLOGY ASSESSMENT
BY FIELD SUMMARY OF GROUND OBSERVATIONS

County LEE Township 24 Range 10E Section 17 Field 09 + 10

Date 1	Acres est. 2	Crop 3	Height 4	Stage of Maturity 5	Row		Ground Cover 8	Observations 9	Observer 10	JSC Comments 11
					Dir. 6	Width 7				
#09 6-12	24	Soyas	Not up but planted		2	36"	0	0	SULLIVAN	
6-29	"	"	6"	Prebloom	2	"	0		"	
7-18	"	"	18"	"	2	36	2		"	
8-6	"	Beans	36"	EARLY Pod Set	2	36	3	0	"	
8-22	"	Soya	42	LATE Pod Set	2	36	4	0	"	
9-E	"	"	42	4	2	36	4		"	
9-28	"	"	42	6	2	36	4	0	"	
#10 6-12	6	CORN	12"	PRETASSEL	2	36"	0	0	SULLIVAN	
6-29	"	"	30"	"	"	"	3	2	"	
7-18	6	"	76"	TASSELED	2	36"	4	Not Full TASSEL	"	
8-6	"	"	102"	TASSELED	2	36"	4	0	"	
8-22	"	Corn Pops	102"	"	2	36"	4	Aphids	"	
9-E	6	"	102	3	2	36	4		"	
9-28	6	Popcorn	102	3	2	36	4	36	"	

6-15-73

CROP ID TECHNOLOGY ASSESSMENT
 IDENTIFICATION SUMMARY

CITARS # 6-67

County LEE

Township 21N

Range 10E

Section 19

Field No.	Crop	Crop ID Data			R o w		Area (acres)			Comments
		Conf.	Date	Source	Dir.	Width	Est.	Meas.	Analyst	
61	Sudan						14			
62	Pasture						25			
63	CORN						39			<6" 6-12
64	HAY						13			
65	SOYA						20			<6" 6-12
66	Waterway-brush						5			
67	SOYA						22			<6" 6-12
68	Rye						10			Combined after 7-18
69	SOYA						25			<6" 6-12
70	SOYA						20			<6" 6-12

6-15-73

 ASCS SUPPORT FOR CROP ID TECHNOLOGY ASSESSMENT ^{#16-67}
 BY FIELD SUMMARY OF GROUND OBSERVATIONS

 County LEE Township 21N Range 10E Section 19 Field 61 + 62

Date 1	Acres est. 2	Crop 3	Height 4	Stage of Maturity 5	Row		Ground Cover 8	Observations 9	Observer 10	JSC Comments 11
					Dir. 6	Width 7				
#61 6-12	14	BARE SOIL						0	SULLIVAN	
6-29	"	Sudan Grass	6"		0	0	3		"	
7-18	"	"	18"		0		4	WEEDS	"	
8-6	"	SUDAN	24" to 60"				4	VERY Weedy Being Grazed		
8-22	"	"	24"	No Sudan Left				23	"	
9-E	"	"	18"		0	0	4	32	"	
9-28	"	SUDAN MOSTLY weedy	18		0	0	4	32	"	
#62 6-12	25	PERM. PASTURE						23	SULLIVAN	
6-29	"	"							"	
7-18	"	"							"	
8-6	"	"							"	
8-22	"	"							"	
9-E	"	"							"	
9-28	"	"							"	

6-15-73

ASCS SUPPORT FOR CROP ID TECHNOLOGY ASSESSMENT

BY FIELD SUMMARY OF GROUND OBSERVATIONS

102

County LEE Township 24N Range 10E Section 19 Field 63 + 64

Date	Acres est.	Crop	Height	Stage of Maturity	Row		Ground Cover	Observations	Observer	JSC Comments
					Dir.	Width				
1	2	3	4	5	6	7	8	9	10	11
#63 6-12	39	CORN	UNDER 6"	PRETASSEL	1	40"	0	0	SULLIVAN	
6-29	"	"	12"	"	"	"	2	Weedy	"	
7-18	"	"	36"	1	1	40	3	GRASSY (WEEDS)	"	
8-6	"	"	60"	TASSELED	1	40	4	0	"	
8-22	"	"	72"	"	1	40	4	0	"	
9-E	"	"	72	2	1	40	4		"	
9-28	"	"	72	3	1	40	4		"	
#64 6-12	13	HAY	25"		0	-	4	0	SULLIVAN	
6-29	"	"	40"	Mowed	"	0	4		"	
7-18	"	"	—	—	0		4		"	
8-6	"	"	36" Comb. Tim. Seed off Top		0	0	4	0	"	
8-29	"	"	6"	—	0	0		6	"	
9-E	"	"	12		0	0	4	6	"	
9-28	"	"	12	—	0	0	4	6	"	

6-15-73

ASCS SUPPORT FOR CROP ID TECHNOLOGY ASSESSMENT

BY FIELD SUMMARY OF GROUND OBSERVATIONS

County LEE Township 21N Range 10E Section 19 Field 65+66

Date 1	Acres est. 2	Crop 3	Height 4	Stage of Maturity 5	R o w		Ground Cover 8	Observations 9	Observer 10	JSC Comments 11
					Dir. 6	Width 7				
#65 6-12	20	Soyas	LESS + THAN 6	Prebloom	1	38"	0	12	SULLIVAN	
6-29	"	"	12"	"	1	"	"	8 acres ARE SRP-150-West End	"	
7-18	"	Soya	24"	BLOoming	1	38"	2	8 acres Test Plot is 18" High	"	
8-6	"	"	30	EARLY Pod Set	1	38"	3	0	"	
8-22	"	"	36'	LATE Pod Set	4	38"	4	37, 32	"	
9-E	"	"	36	4 + 5	4	38	4	32	"	
9-28	"	"	36	6	4	38	4	32	"	
#66 6-12	5	Waterway Brush						0	SULLIVAN	
6-29	"	"							"	
7-18	"	"							"	
8-6	"	"							"	
8-22	"	"							"	
9-E	5	"							"	
9-28	5	"							"	

6-15-73

ASCS SUPPORT FOR CROP ID TECHNOLOGY ASSESSMENT

BY FIELD SUMMARY OF GROUND OBSERVATIONS

County LEE Township 24 N Range 10 E Section 19 Field 67 & 68

104

Date 1	Acres est. 2	Crop 3	Height 4	Stage of Maturity 5	Row		Ground Cover 8	Observations 9	Observer 10	JSC Comments 11
					Dir. 6	Width 7				
#67 6-12	22	Soyas	under 6"	Prebloom	3	38"	0	12	SULLIVAN	
6-29	"	Soya	12"	"	"	"	0		"	
7-18	"	Soya	24	Blooming	3	38	2		"	
8-6	"	"	30"	EARLY Pod Set	3	38	3	0	"	
8-22	"	"	36"	Late Pod Set	3	38	4	37, 32	"	
9-E	"	"	36	4 + 5	3	38	4	32	"	
9-28	"	"	36	6	3	38	4	32	"	
#68 6-12	10	Rye	36"	HEADED	0	-	4	0	SULLIVAN	
6-29	"	"	48"	Turning	0	0	4		"	
7-18	10	"		-	0		4	RIPE	"	
8-6	"	"	Combined		0	0	4	0	"	
8-22	"	"	6"		0	0	4	6	"	
9-E	"	"	Combined + stubble - clipped		0	0	4		"	
9-28	"	"	6"		0	0	4	6	"	

6-15-73

ASCS SUPPORT FOR CROP ID TECHNOLOGY ASSESSMENT

BY FIELD SUMMARY OF GROUND OBSERVATIONS

County LEE Township 24N Range 10E Section 19 Field 69 + 70

Date 1	Acres est. 2	Crop 3	Height 4	Stage of Maturity 5	R o w		Ground Cover 8	Observations 9	Observer 10	JSC Comments 11
					Dir. 6	Width 7				
#69 6-12	25	Soyas	UNDER 6"	Prebloom	3	38"	0	12	SULLIVAN	
6-29	"	"	12"	"	"	"	0		"	
7-18	"	"	24"	Blooming	3	38"	2		"	
8-6	"	"	30"	EARLY Pod Set	3	38"	43	0	"	
8-22	"	"	36"	Late Pod Set	3	38	4	37, 32	"	
9-E	"	"	36	4+5	3	38	4	32	"	
9-28	"	"	36	6	3	38	4	32	"	
#70 6-12	20	Soyas	UNDER 6"	Prebloom	1	38"	0		SULLIVAN	
6-29	"	"	12	"	"	"	0		"	
7-18	20	Soya	24"	Blooming	1	38"	2		"	
8-6	"	"	30"	EARLY Pod Set	1	38	3	0	"	
8-22	"	"	36"	Late Pod Set	1	38	4	37, 32	"	
9-E	"	"	36'	4+5	1	38	4	32	"	
9-28	"	"	36	6	1	38	4	32	"	

6-15-73

CROP ID TECHNOLOGY ASSESSMENT
IDENTIFICATION SUMMARY

CITARS # 6-62

County LELE

Township 22N

Range 10E

Section 30

Field No.	Crop	Crop ID Data			R o w		Area (acres)			Comments
		Conf	Date	Source	Dir.	Width	Est.	Meas.	Analyst	
41	Hay						22			
42	Pasture						58			
43	Hay						8			
44	CORN						8			12" 6-2
45	Pasture & buildings						18			
46	Hay (Alfalfa)						15			
47	Oats						25			Combined after 7-18
48	CORN						6			12" 6-12

6-15-73

ASCS SUPPORT FOR CROP ID TECHNOLOGY ASSESSMENT
BY FIELD SUMMARY OF GROUND OBSERVATIONS

(62) #6-62

County LEE Township 22 N Range 10 E Section 30 Field 41 + 42

Date 1	Acres est. 2	Crop 3	Height 4	Stage of Maturity 5	Row		Ground Cover 8	Observations 9	Observer 10	JSC Comments 11
					Dir. 6	Width 7				
#41 6-12	22	HAY	42"	T.M. + AL1				0	SULLIVAN	
6-29	"	"	LESS THAN 6"		0	0	4	1/2 Wind Rowed	"	
7-18	"	"	18"	-	0		4	Regrowth	"	
8-6	"	"	18"		0	0	4	Regrowth	"	
8-22	"	"	18		0	0	4	6	"	
9-E	"	"	18		0	0	4	6	"	
9-28	"	"	18	-	0	0	4	6	"	
#42 6-12	58	PERMANENT PASTURE						23	SULLIVAN	
6-29	"	"							"	
7-18	"	"	-	-	-	-	-	-	"	
8-6	"	"							"	
8-22	"	"							"	
9-E	"	"							"	
9-28	"	"							"	

6-15-73

ASCS SUPPORT FOR CROP ID TECHNOLOGY ASSESSMENT
BY FIELD SUMMARY OF GROUND OBSERVATIONS

108

County LEE Township 22N Range 10E Section 30 Field 43 + 44

Date 1	Acres est. 2	Crop 3	Height 4	Stage of Maturity 5	Row		Ground Cover 8	Observations 9	Observer 10	JSC Comments 11
					Dir. 6	Width 7				
#43 6-12	8	HAY	40					0	SULLIVAN	
6-29	"	"	Less than 6"			0	0	4	24	"
7-18	"	"	18"	-		0		4	REGROWTH	"
8-6	"	"	24"			0	0	4	REGROWTH	"
8-22	"	"	12"			0	0	4	6	"
9-E	"	"	18"			0	0	4	6	"
9-28	"	"	18"	-		0	0	4	6	"
#44 6-12	8	CORN	12"	PRETASSEL	1	40"	0	0	SULLIVAN	
6-29	"	"	36"		1	"	4		"	
7-18	"	"	84"	TASSELED	1	40	4		"	
8-6	"	"	96"	TASSELED	1	40	4	0	"	
8-22	"	"	102"	"	1	40"	4	0	"	
9-E	"	"	102"	3	1	40"	4		"	
9-28	"	"	102"	3	1	40"	4	0	"	

6-15-73

ASCS SUPPORT FOR CROP ID TECHNOLOGY ASSESSMENT

BY FIELD SUMMARY OF GROUND OBSERVATIONS

County LEE Township 22N Range 10E Section 30 Field 45+46

Date 1	Acres est. 2	Crop 3	Height 4	Stage of Maturity 5	Row		Ground Cover 8	Observations 9	Observer 10	JSC Comments 11
					Dir. 6	Width 7				
#45 6-12	18	PERMANENT PASTURE + Bldg. Site							Sullivan	
6-29	"	"							"	
7-18	"	PERMANENT PASTURE							"	
8-6	"	"							"	
8-22	"	"							"	
9-E	"	"							"	
9-28	"	"							"	
#46 6-12	15	HAY	24	ALFALFA					SULLIVAN	
6-29	"	"			0	0	4		"	
7-18	"	"			0		4	FRESHLY MOWED	"	
8-6	"	"	12"		0	0	4	0	"	
8-22	"	"	12"		0	0	4	6	"	
9-E	"	"	Less than 6"		0	0	4	MOWED + ROLLED	"	
9-28	"	"	6"		0	0	4	6	"	

6-15-73

ASCS SUPPORT FOR CROP ID TECHNOLOGY ASSESSMENT

110

BY FIELD SUMMARY OF GROUND OBSERVATIONS

County LEE Township 22N Range 10E Section 30 Field 47+48

Date	Acres est.	Crop	Height	Stage of Maturity	Row		Ground Cover	Observations	Observer	JSC Comments
					Dir.	Width				
1	2	3	4	5	6	7	8	9	10	11
#47 6-12	25	OATS	18"	BOOT	0	-	4	0	SULLIVAN	
6-29	"	"			0	0	4		"	
7-18	"	"	36"	-	0		4	RIPE	"	
8-6	"	"	COMBINED		0	0	4	0	"	
8-22	"	"	12	HARVESTED	0	0	4	6	"	
9-E	"	"	Less than 6"		0	0	4	OATS Combined + Seeding clipped	"	
9-28	"	"	6"	-	0	0	4	6	"	
#48 6-12	6	CORN	12"	PRETASSEL	2	40	0	0	SULLIVAN	
6-29	"	"			"	"	4		"	
7-18	"	"	84"	TASSELED	2	40	4		"	
8-6	"	"	96"	TASSELED	2	40	4	0	"	
8-22	"	"	102	"	2	40	4	0	"	
9-E	"	"	102	3	2	40	4		"	
9-28	"	"	102	3	2	40	4	0	"	